

PERSONAL NAVIGATOR

MONDAY, MAY 27, 2013

Sunrise 5:15 a.m. Sunset 9:05 p.m.

Evening Attire: Cruise Casual

All Aboard: 4:00 p.m.

Monday: Partly Sunny High: 64°F/18°C

VANCOUVER, BRITISH COLUMBIA



ALL ABOARD!
Let The Magic Begin!



WALT DISNEY THEATRE
DECK 4, FORWARD
6:15 P.M. & 8:30 P.M.

Featuring

The Comedy and Ventriloquism of
Michael Harrison



and the
Disney Wonder Performers

 Assistance available at the entrance to the Walt Disney Theatre 30 minutes prior to show time.

MEMORIAL DAY

Welcome Aboard!

- Your Stateroom and Luggage**
 Staterooms will be ready at 1:30 p.m. To allow stateroom hosts to prepare your room, please do not remove the blue stanchion straps. Stateroom hosts will deliver luggage throughout the day until 5:30 p.m.
- Staterooms with Bunk Beds**
 Bunk beds are recessed into the ceiling and will be prepared during evening turndown service by your Stateroom Host/ess.
- Stateroom Safe**
 Each stateroom is equipped with a secured storage safe. Instructions for use are located on the safe.
- To Change Dining Assignment**
 Requests for different seating times will be taken today:
 > 12:30 p.m. - 3:30 p.m., Studio Sea, Deck 4, Midship.
 > 3:30 p.m. - 5:00 p.m. Please call 7-10891 and leave a voicemail.
- Palo Dining Reservations:**
 Are required and will be taken on a first come basis today at:
 > 12:30 p.m. - 3:30 p.m., Studio Sea, Deck 4, Midship.
 > 3:30 p.m. - 5:00 p.m. Please call 7-6843 and leave a voicemail.
- Beverage Seminar Reservations:**
 > Studio Sea, Deck 4, Midship.
- Dinner**
 5:45 p.m. - First Seating and 8:15 p.m. - Second Seating
 Please check your dining tickets for details of your dining rotation, and bring them to your specific dining location. There is no need to wait in line prior to dinner. Dining Rooms open at designated seating times and your table is reserved each night of your cruise.



ADVENTURES AWAY

Earn your status as V.I.P. sailors! Join your Cruise Director, Ray, your Disney pals and your Cruise Staff as we officially begin your "Adventures Away."

4:30 p.m.,
Goofy's Pool Stage,
Deck 9, Midship

Don't Miss:

TALENT SHOW SIGN UP
 Let your family take center stage and strut their stuff. Everybody has a talent - it's time to show off yours! Pre-register at the Port Adventures Desk.

DISNEY FRIENDS TEA PARTY
 Be sure to stop by Guest Services to reserve your special pass for an opportunity to have tea with your Disney friends. (Limited number available).

WALKING SHIP TOUR
Meet at Deck 10, Forward, Elevators - 2:30 p.m.
 Enjoy the beauty of the Disney Wonder® with your Cruise Staff in this guided tour.

FAMILY SUPERSTAR KARAOKE
Studio Sea, Deck 4, Midship - 10:30 p.m.
 Join your Cruise Staff in Studio Sea tonight and sing along to your favorite song - fun for everyone.



Get The Picture!

Take home all your stateroom photos from this cruise on a CD! Terms and conditions apply. Visit Shutters on Deck 4, Aft and ask your friendly Shutters staff for more information. Due to high volume of photos and limited time, we will only be accepting the first 100 orders. Hurry! Order yours now.

DINNER MENU Animator's Palate: Show Dinner
 Parrot Cay: Island Dinner
 Triton's: French Dinner

DRINK OF THE DAY Nautilus (Alcoholic)
 Coco Bali (Non Alcoholic)

IMPORTANT NUMBERS
 Fire/Security: 7-3001
 Medical Emergency: 7-3000
 Health Center: 7-1923

FUN FOR ALL AGES HIGHLIGHTS

MICKEY MANIA

Studio Sea, Deck 4, Midship - 7:30 p.m.

Join us for the Ultimate test of your Disney knowledge as we play our live, interactive gameshow, that's "insania!"

Cruise Highlights

Monday	VANCOUVER Port Departure: 5:00 pm All Aboard: 4:00 pm Attire: Cruise Casual	WELCOME ABOARD: LET THE MAGIC BEGIN Walt Disney Theatre 6:15 p.m. & 8:30 p.m.
Tuesday	DAY AT SEA Attire: Formal	THE GOLDEN MICKEYS Walt Disney Theatre 6:15 p.m. & 8:30 p.m.
Wednesday	TRACY ARM Attire: Cruise Casual	SHOWTIME: MICHAEL HARRISON Walt Disney Theatre 6:15 p.m. & 8:30 p.m.
Thursday	SKAGWAY All Ashore: 7:15 am All Aboard: 7:30 pm Attire: Cruise Casual	MOVIE SPECIAL: IRON MAN 3 Walt Disney Theatre 5:00 p.m. & 8:00 p.m.
Friday	JUNEAU All Ashore: 6:15 am All Aboard: 4:30 pm Attire: Cruise Casual	TOY STORY THE MUSICAL Walt Disney Theatre 6:15 p.m. & 8:30 p.m.
Saturday	KETCHIKAN All Ashore: 11:15 am All Aboard: 7:30 pm Attire: Semi-Formal	SHOWTIME RICKY KALMON Walt Disney Theatre 6:15 p.m. & 8:30 p.m.
Sunday	DAY AT SEA Attire: Cruise Casual	DISNEY DREAMS: AN ENCHANTED CLASSIC Walt Disney Theatre 6:15 p.m. & 8:30 p.m.

Subject to change.



ADULT ACTIVITY HIGHLIGHTS

FITNESS CLASSES



Vista Spa and Salon has a variety of seminars and fitness classes available throughout the cruise.

VISTA SPA

VISTA SPA FITNESS CLASSES & SEMINARS

Vista Spa Open House - Vista Spa & Salon - 12:00 p.m.
Spa Raffle - Vista Spa & Salon - 3:15 p.m.

BEVERAGE SEMINARS

Your Beverage team has a host of tastings and seminars to entertain and educate you. Pre-book these experiences at Guest Services, Deck 3, Midship (nominal fee applies).

Mixology - Wine Tasting - Martini Tasting - Champagne Tasting -
Beer Tasting - Cognac Tasting - Whisky Tasting -
Tequila & Margarita Tasting

WONDER QUEST

Wavebands, Deck 3, Forward - 10:30 p.m.

Enjoy the wildest and wackiest scavenger team event on the seven seas!

FEATURED VARIETY ACT THIS VOYAGE



THE COMEDY & VENTRILOQUISM OF MICHAEL HARRISON

Michael Harrison is an extraordinarily talented ventriloquist, puppeteer and comedian. He has worked along side numerous acts from The Muppets to Boyz to Men. Michael wrote and starred in the award winning television show, "Kids in the Firehall," which was awarded the prestigious Bronze Apple Award. Recently, he took his talents to a new level when he appeared on "America's Got Talent." He finished as one of the finalist and received glowing reviews from the celebrity judges, David Hasselhoff, Sharon Osborne and Piers Morgan.



THE PHYSICAL COMEDY OF ADAM ACE

Adam Ace has been a professional comedian since graduating from college in 1997. In that time he has performed in 49 of the 50 states, appeared on stage in 27 countries, entertained at 11 military bases, been seen on over 35 different cruise ships and entertained on over 500 college campuses nationwide. He has headlined casinos in Atlantic City and Las Vegas, headlined comedy clubs in Los Angeles and in 2007 he was selected to perform at the White House.



THE COMEDY & HYPNOSIS OF RICKY KALMON

For over two decades, Ricky Kalmon's hypnosis show has amazed audiences around the world. Ricky is the star of SNAP! that airs on Disney Channel. An exciting and high-energy experience, Ricky's live shows are the 'Only Comedy Show Where the Audience Becomes the Stars'. His uniqueness comes from the way he combines music, audience participation, and comedy to create an unforgettable show which is unmatched by anyone. It's a show that will keep you on the edge of your seat and take you on a vacation of the mind! A Ricky Kalmon show is more than a comedy show—it's an experience!



THE PHYSICAL COMEDY OF MICHAEL HOLLY

Michael Holly has been an audience favorite in Las Vegas and around the world for a looong tiime! There's only one reason for this...he's funny! What more can you ask for, you invite him over to your place...you laugh. Cause and effect, yin and yang, ipso and facto. Need we say more?

YOUTH ACTIVITIES HIGHLIGHTS



Deck 5, Midship (7-18500) 5:30 p.m. - 11:00 p.m.

Infants and Toddlers can enjoy toys and activities at Flounder's Reef Nursery. Reservations are first come, first served so please stop by!



Deck 5, Midship (7-1440)

(3 - 12 years old)

12:30 p.m. - 3:15 p.m.

5:00 p.m. - 12:00 mid



Deck 5, Midship (7-1445)

(3 - 12 years old)

12:30 p.m. - 3:15 p.m.

5:00 p.m. - 12:00 mid

REGISTRATION FOR 3 - 12 YEAR OLDS

Meet the Youth Activities Team in the Oceaneer Lab and Oceaneer Club, complete your registration & learn all about the Themed Experiences this cruise!

CLUBHOUSE SERIES - The Clubhouse Themed Experiences focus on movement and feature content which appeals to younger children. *Recommended for children seven years and younger.*

STORYBOOK SERIES - The Storybook Series Themed Experiences are designed with a strong connection to the Disney classic stories. *Recommended for children seven years and younger.*

JUMP UP! SERIES - The Let's Move! Themed Experiences will include large ground games & movement-oriented activities.

CREATE & INVENT SERIES - The Create & Invent Themed Experiences will have a tactile focus allowing children to create and admire their work.

IN THE SPOTLIGHT SERIES - The In The Spotlight Themed Experiences focus on children's stage presence with lots of activities and enthusiasm. *Recommended for children seven years and older.*

SOLVE IT! SERIES - The Solve It! Themed Experiences are less active, but will challenge children with problem/solutions-based activities. *Recommended for children seven years and older.*

YOUTH ACTIVITIES OPEN HOUSE - Activities for families, adults and children of all ages to enjoy together.

DINE & PLAY

As a convenience for families dining at 8:15 p.m., our Youth Activities Counselors will be available at 9:15 p.m. at the entrance of Triton's, Parrot Cay and Animator's Palate dining rooms to bring registered children to join the fun in the Oceaneer Club and Oceaneer Lab.

YOUTH ACTIVITIES OPEN HOUSE

Open House is an opportunity for all to come and participate in a variety of exciting activities and free time in Flounder's Reef Nursery, Oceaneer Club, Lab, Edge and Vibe throughout the cruise. During these times secured programming will still be offered in the other venue for those looking to check their children into care.

Deck 2, Midship (7-5810)
(11 - 14 years old)

12:30 p.m. - 3:15 p.m.

5:00 p.m. - 1:00 a.m.

(11- 14 YEAR OLDS)

Edge is an interactive play space where tweens can play video games, watch television and participate in arts and crafts with kids their own age.

THE 411
10:00 p.m.

Come and meet your counselors and fellow Tweens as we get to know each other and what there is for you to do all cruise long in Edge.



Deck 11, Midship (7-1456)
(14 - 17 years old)

12:30 p.m. - 3:15 p.m.

5:00 p.m. - 1:00 a.m.

THE DOWNLOAD

10:30 p.m.

Come up to Vibe and help plan all the fun activities you will be doing this cruise with your new friends!

BUENA VISTA THEATRE

Feature Movies this Week

Subject to change.

MONDAY - VANCOUVER

5:00 p.m.	PG	Brave	DOLBY.3D
8:00 p.m.	PG	Brave	DOLBY.3D
10:15 p.m.	PG	Wreck-It Ralph	DOLBY.3D

TUESDAY - DAY AT SEA

10:30 a.m.	G	Finding Nemo	DOLBY.3D
3:00 p.m.	G	Snow White	
5:00 p.m.	PG	Wreck-It Ralph	2D Version
8:00 p.m.	PG	Wreck-It Ralph	2D Version
10:30 p.m.	PG-13	The Avengers	DOLBY.3D

WEDNESDAY - TRACY ARM

8:30 a.m.	G	Finding Nemo	DOLBY.3D
12:30 p.m.	PG	Brave	2D Version
3:00 p.m.	G	Beauty and the Beast	
5:00 p.m.	PG	Oz The Great and Powerful	DOLBY.3D
8:00 p.m.	PG	Oz The Great and Powerful	DOLBY.3D
10:45 p.m.	PG-13	Lincoln	

THURSDAY - SKAGWAY

8:30 a.m.	G	The Lion King	DOLBY.3D
2:00 p.m.	PG-13	The Avengers	2D Version
5:00 p.m.	PG-13	Iron Man 3	2D Version
8:00 p.m.	PG-13	Iron Man 3	2D Version
10:45 p.m.	PG	Oz The Great and Powerful	DOLBY.3D

FRIDAY - JUNEAU

11:00 a.m.	PG-13	Iron Man 3	DOLBY.3D
2:00 p.m.	PG-13	Lincoln	
5:00 p.m.	PG-13	The Avengers	DOLBY.3D
8:00 p.m.	PG-13	The Avengers	DOLBY.3D
10:45 p.m.	PG-13	Iron Man 3	DOLBY.3D

SATURDAY - KETCHIKAN

10:30 a.m.		Beauty and the Beast	
12:30 p.m.	PG	Wreck-It Ralph	DOLBY.3D
2:45 p.m.	PG-13	Iron Man 3	DOLBY.3D
5:15 p.m.	PG-13	Iron Man 3	2D Version
8:00 p.m.	PG-13	Iron Man 3	2D Version
10:45 p.m.	PG-13	Lincoln	

SUNDAY - DAY AT SEA

8:30 a.m.	G	The Little Mermaid	
2:00 p.m.	PG-13	Iron Man 3	2D Version
5:00 p.m.	PG	Oz The Great and Powerful	2D Version
8:00 p.m.	PG	Oz The Great and Powerful	2D Version
10:45 p.m.	PG-13	Iron Man 3	2D Version

MORE TO ENJOY WHILE ONBOARD



DISNEY VACATION CLUB® GROUP PREVIEW

Want to learn more about taking magical vacations year after year? Please see a Disney Vacation Club representative on Deck 4, Midship, or call 7-2805 from your stateroom phone for more information about our interactive group presentation.



DISNEY FANTASY!

Set sail on the Disney Fantasy! Choose a 7-Night Eastern Caribbean cruise and visit St. Maarten and San Juan, Puerto Rico or St. Thomas with Port Adventures to St. John, Disney's Castaway Cay, plus three magical days at sea. Visit the Future Cruise Sales Desk for more information.



ALASKA SHOPPING INFORMATION

Meet your Shopping Guides, Johan & Marissa, at the Port & Shopping Desk, Deck 3, Midship from 7:30 p.m.-8:30 p.m. Don't miss tomorrow's Alaska Shopping Show in The Buena Vista Theater at 1:30 p.m. Stop by the Shopping Desk to pick up extra raffle tickets to win a Diamond Pendant at tomorrow's Shopping Show!



VISTA SPA

FORGOT TO BOOK ONLINE?

Book and receive any of our Signature treatments TODAY ONLY and enjoy \$30 off a Signature treatment.

Deck 9, Forward - Phone : 7-1465

TODAY'S SHOPPING SPECIAL

Stop by Treasure Ketch to try on the world's most memorable white diamond pieces and commemorate your cruise. Ask the hosts about 50% savings off US retail. Treasure Ketch, Deck 4, Forward.

Sophia Fiori



WELCOME ABOARD RAFFLE

Your embarkation photos will be available for viewing at 5:30 p.m. Visit Shutters and fill in a raffle entry for a chance to win two 8x10 photos!

QUARTER MASTER ARCADE

Where can you fly a fighter jet, save a Princess, race NASCAR's greatest and beat bad guys all before dinner? Quarter Master is on Deck 9, Midship, where the champions play.

SURF @ SEA

\$0.75 per minute or save money by buying blocks of time. \$55 for 100 minutes, \$100 for 250 minutes and \$150 for 500 minutes. Wireless information sheets are available at Guest Services, Deck 3, Midship and Internet Cafe, Deck 3, Aft.



Welcome aboard and get ready to head north for the sights and scenery that all our stops in Alaska have to offer! From whales to glaciers to dog sledding, the opportunities are endless. Our knowledgeable team is standing by to help plan your Alaskan Adventures. Come see us on Deck 3, Midship, at our Port Adventures Desk.

SHOPPING

DESIGNER WATCHES

Visit Treasure Ketch, Deck 4, Midship and choose from a wide assortment of designer watches including Fossil and Kenneth Cole.

CHAMILIA JEWELRY

Create and personalize your own Chamilia Bracelet. Choose from a selection of sterling silver beads with many of them featuring your favorite Disney Characters.

GREAT OFFERS ONBOARD!

Get a Disney Cruise Line ship plush for \$24.95 when you spend \$25 or more and a Disney Cruise Line watch for \$14.95 when you spend \$30 or more. Promotion available in Treasure Ketch and Mickey's Mates.

SOPHIA FIORI DIAMOND TRUNK SHOW WITH CAROL & GILBERT

Sophia Fiori, Hollywood's first choice in diamonds has boarded the Disney Wonder to premier their new collection of white & colored diamonds worn at the Oscars, Golden Globes, Emmy and Grammy Awards. Stop by Treasure Ketch on Deck 4 and view this stunning collection. 50% below U.S. retail.

PHILIP STEIN WATCHES ARRIVE!

Philip Stein Watches arrive onboard Disney Cruise Line. Philip Stein watches are not just a watch, but an element of a healthy and well-balanced lifestyle. People who wear Philip Stein care about their looks as well as their overall well-being. The timepieces reflect the attitude and personal values of the wearer. See the entire Collection today at Treasure Ketch, All at great Duty Free Prices

Due to port regulations, when the ship is docked, the stores will remain closed.

IMPORTANT INFORMATION

Security Notice

All Guests (including Children) who wish to disembark or embark the ship are required to present their Key to the World card at the gangway. A photo ID is also required for those Guests who are 18 years of age or older. Guests under the age of 18 are required to have a Parent, Guardian or other responsible adult sign an authorization form at the time it is given out if they wish to go ashore unaccompanied. Authorization forms are available at the gangways and Guest Services.

Cold and Flu Reminder

Please wash hands frequently and thoroughly, particularly before meals. Contact the Health Center by dialing 7-1923, should anyone in your party become ill.

Inclement Weather

For the safety of all Guests, outdoor events may be changed due to unforeseen weather conditions.

Corridor Quiet Hours

As a courtesy to all our Guests, please recognize quiet hallway hours from 10:00 p.m. til 8:00 a.m.

Environmental Message

With Disney's commitment to the Environment please refrain from throwing anything over the Ship's side. Thank you.

No Reserved Seats Policy

As a courtesy to all Guests we kindly advise that the saving of seats is not permitted in the Walt Disney Theatre, and the saving of the sun loungers is not permitted on Deck 9 and 10. Items left unattended will be returned to lost and found at Guest Services, Deck 3, Midship.

Smoking

For the comfort of our Guests the following open deck areas on the Starboard Side are designated as Smoking areas: Deck 4, Starboard side from 6:00 p.m. to 6:00 a.m. ONLY, Deck 9, Forward Starboard side at Quiet Cove and Deck 10, Starboard side. Smoking is prohibited in all Guest staterooms. Guests found smoking in their staterooms will be charged a \$250 stateroom recovery fee. Electronic cigarettes may only be used in designated smoking areas.

Sunscreen Advisory

Don't forget to apply sunscreen and insect repellent when going ashore.

Walt Disney Theatre

Theatrical performances may use artificial fog, strobe lights, pyrotechnics and other special effects. For the safety of our performers and the comfort of those around you, the use of any photography or video recording device or any electronic equipment is prohibited.

Verandah Safety

Please do not leave any combustible materials on your balcony when not present in your stateroom for safety reasons.



WELCOME ABOARD!

Mandatory Life Boat Drill

4:00 PM
 (All Guests must attend)
 You will not need to wear your life jacket, however it is critical that you bring your Key To The World card to your Assembly Station. All ship services will be suspended between 3:30 and 4:30 p.m.



ADVENTURES AWAY

Earn your status as V.I.P. sailors! Join your Cruise Director, Ray, your Disney pals and your Cruise Staff as we officially begin your "Adventures Away."

4:30 p.m.,
Goofy's Pool Stage,
Deck 9, Midship



Fold along the dotted lines and take me with you so you don't miss any of the fun!

Afternoon	1:45	2:00	2:15	2:30	2:45	3:00	3:15	3:30	3:45	4:00	4:15	4:30	4:45	5:00	5:15	5:30	5:45	6:00	6:15	6:30	6:45					
FUNNEL VISION																A Bug's Life (G) Funnel Vision										
BUENA VISTA THEATRE												Brave (PG) Duration: 1 Hours 41 Minutes				DOLBY 3D										
CHARACTER												Mickey Lobby, Port Side				All Aboard: Let the Magic Begin! Walt Disney Theatre										
FUN FOR ALL AGES	Walking Ship Tour Deck 10, Forward		Poolside Jams with DJ Wendell Goofy's Pool Stage													Adventures Away Goofy's Pool		Family Time Tunes with Sonic Groove Promenade Lounge				All Aboard: Let The Magic Begin! Walt Disney Theatre				
ADULTS	Spa Tour Vista Spa & Salon													Spa Raffle Vista Spa Fitness Ctr												
VIBE 14-17 YEARS OLD	OH Open House																									
EDGE 11-14 YEARS OLD	OH Open House																									
OCEANEER LAB 3-12 YEARS OLD	OH Open House and Registration until 3:15 p.m.																									
OCEANEER CLUB 3-12 YEARS OLD	OH Open House and Registration until 3:15 p.m.																									

All ship services will be suspended during this time for the Mandatory Life Boat Drill scheduled for 4:00 p.m. along Deck 4.

Refer to the posted drill instructions on the back of your stateroom door prior to heading to Deck 4. Please bring your Key to the World Card to the Life Boat Drill.

Symbol for activities that will be repeated during the cruise

Disney WONDER

Evening	7:00	7:15	7:30	7:45	8:00	8:15	8:30	8:45	9:00	9:15	9:30	9:45	10:00	10:15	10:30	10:45	11:00	11:15	11:30	11:45	12:00				
FUNNEL VISION	The Lion King (G) Funnel Vision											Mary Poppins (PG) Funnel Vision													
BUENA VISTA THEATRE	Brave (PG) Duration: 1 Hours 41 Minutes											Wreck-It Ralph (PG) Duration: 1 Hours 53 Minutes													
CHARACTER	Goofy Lobby, Port Side		All Aboard: Let the Magic Begin! Walt Disney Theatre											Minnie Lobby, Port Side		For detailed character appearances, call 7-PALS or refer to the Character Screen in the Lobby Atrium.									
FUN FOR ALL AGES	Pin Station Preludes >8:15 p.m.		Mickey Mania Studio Sea		All Aboard: Let The Magic Begin! Walt Disney Theatre											DOLBY 3D Disney Studio Sea		Family Superstar Karaoke Studio Sea							
ADULTS			Get Down with Sonic Groove Promenade Lounge															Top 40 Hits with Sonic Groove Promenade Lounge		Ballroom Dancing with Sonic Groove Promenade Lounge					
ADULTS			Music & Martinis with Seth Gibson Cadillac Lounge															The Signed LIVE Wavebands		Wonder Quest Wavebands		The Signed LIVE Wavebands		DJ Wendell Wavebands	
VIBE 14-17 YEARS OLD	Game Challenge											Ice Breakers													
EDGE 11-14 YEARS OLD	Mario Kart Challenge															Profiles		Ice Breakers		The 411		Ultimate Disney Trivia		Movie Night	
OCEANEER LAB 3-12 YEARS OLD	Meet Your Counselors		Welcome Party													Ice Breakers		Lava Flow							
OCEANEER CLUB 3-12 YEARS OLD	Welcome Party		Memory Wall													Toy Story Boot Camp		Picture This							

FOLD

FOLD

CLUBHOUSE SERIES

STORYBOOK SERIES

IN THE SPOTLIGHT SERIES

SCOLVE IT! SERIES

BUMP UP! SERIES

CREATE & INVENT SERIES

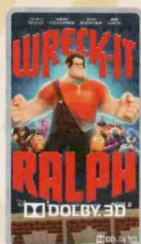
OPEN HOUSE

Evening Attire: Cruise Casual

BUENA VISTA THEATRE



5:00 p.m. & 8:00 p.m.
 Duration: 1 hr 41 min
 Rating: PG



10:15 p.m.
 Duration: 1 hr 53 min
 Rating: PG

Character Appearances

MICKEY MOUSE

Lobby Atrium, Port Side - 5:30 p.m.

GOOFY

Lobby Atrium, Port Side - 7:15 p.m.

MINNIE MOUSE

Lobby Atrium, Port Side - 9:30 p.m.



Check here each day for Character appearances.

For detailed Character appearance information, please dial 7-PALS or see the Character Information Board in the Lobby Atrium.

Meet-and-Greets will be advertised for the length of time the line will be open. To avoid disappointment, please meet at start time of appearances.

YOUTH ACTIVITIES THEMED EXPERIENCES

CLUBHOUSE SERIES
 focuses on movement and features content which appeals to younger children.

JUMP UP! SERIES
 includes large ground games & movement-oriented activities.

IN THE SPOTLIGHT SERIES
 focuses on children's stage presence with lots of activities and enthusiasm.

STORYBOOK SERIES
 is designed with a strong connection to the Disney classic stories.

CREATE & INVENT SERIES
 will have a tactile focus allowing children to create and admire their work.

SOLVE IT! SERIES
 are less active, but will challenge children with problem/solutions-based activities.

YOUTH ACTIVITIES OPEN HOUSE

Activities for families, adults and children of all ages to enjoy together.

SHIP DIRECTORY

YOUTH ACTIVITIES

DISNEY'S OCEANEER CLUB	DECK 5, MID	12:30 PM - 3:15 PM
		5:00 PM - 12:00 MID
DISNEY'S OCEANEER LAB	DECK 5, MID	12:30 PM - 3:15 PM
		5:00 PM - 12:00 MID
EDGE	DECK 2, MID	12:30 PM - 3:15 PM
		5:00 PM - 1:00 AM
VIBE	DECK 11, MID	12:30 PM - 3:15 PM
		5:00 PM - 1:00 AM
FLOUNDER'S REEF NURSERY	DECK 5, AFT	5:30 PM - 11:00 PM

RECREATION

GOOFY'S POOL	DECK 9, MID	12:00 PM - 3:30 PM
		5:30 PM - 12:00 MID
MICKEY'S POOL	DECK 9, AFT	12:00 PM - 3:30 PM
		4:30 PM - 10:00 PM
MICKEY'S SLIDE	DECK 9, AFT	12:30 PM - 3:30 PM
		4:30 PM - 5:30 PM
MICKEY'S SPLASH ZONE	DECK 9, AFT	12:00 PM - 3:30 PM
		4:30 PM - 8:00 PM
PORT ADVENTURES DESK	DECK 3, MID	12:00 PM - 3:30 PM
		4:30 PM - 6:00 PM
		7:00 PM - 8:30 PM
QUIET COVE POOL	DECK 9, FWD	12:00 PM - 3:30 PM
		4:30 PM - 12:00 MID
VISTA FITNESS CENTER	DECK 9, FWD	12:00 PM - 10:00 PM
WIDE WORLD OF SPORTS DECK	DECK 10, FWD	24 HOURS

GENERAL INFORMATION

BUENA VISTA THEATRE	DECK 5, AFT	SHOWTIMES
DISNEY VACATION CLUB DESK	DECK 4, MID	5:00 PM - 8:00 PM
FUTURE CRUISE SALES DESK	DECK 4, MID	7:00 PM - 8:30 PM
FUNNEL VISION	DECK 9, MID	SHOWTIMES
GUEST SERVICES	DECK 3, MID	24 HOURS
MEDICAL HEALTH CENTER	DECK 1, FWD	4:30 PM - 7:00 PM
PORT & SHOPPING DESK	DECK 3, MID	7:30 PM - 8:30 PM
PRELUDES	DECK 4, FWD	5:45 PM - 6:15 PM
		8:00 PM - 8:30 PM
QUARTER MASTERS (ARCADE)	DECK 9, MID	CLOSES AT 11:30 PM
SHUTTERS PHOTO GALLERY	DECK 4, AFT	5:30 PM - 11:00 PM
VISTA SPA AND SALON	DECK 9, FWD	12:00 PM - 10:00 PM
WALT DISNEY THEATRE	DECK 4, FWD	SHOWTIMES

SHOPPING

ART GALLERY	DECK 4, MID	6:00 PM - 9:30 PM
MICKEY'S MATES	DECK 4, FWD	6:00 PM - 11:00 PM
RADAR TRAP (DUTY FREE)	DECK 3, FWD	6:00 PM - 11:00 PM
TREASURE KETCH	DECK 4, FWD	6:00 PM - 11:00 PM

DINING & LOUNGES

LUNCH

BEACH BLANKET BUFFET	DECK 9, AFT	12:00 PM - 3:15 PM
GOOFY'S GALLEY	DECK 9, AFT	11:45 AM - 3:30 PM
PARROT CAY	DECK 3, AFT	11:45 AM - 2:30 PM
PINOCCHIO'S PIZZERIA	DECK 9, MID	11:45 AM - 3:30 PM
PLUTO'S DOG HOUSE	DECK 9, AFT	11:45 AM - 3:30 PM

DINNER

ANIMATOR'S PALATE	DECK 4, AFT	5:45 PM & 8:15 PM
PARROT CAY	DECK 3, AFT	5:45 PM & 8:15 PM
TRITON'S	DECK 3, MID	5:45 PM & 8:15 PM
PALO*(18+)	DECK 10, AFT	6:00 PM - 9:00 PM
GOOFY'S GALLEY	DECK 9, AFT	4:15 PM - 7:00 PM
PINOCCHIO'S PIZZERIA	DECK 9, MID	4:15 PM - 7:00 PM
PLUTO'S DOG HOUSE	DECK 9, AFT	4:15 PM - 9:30 PM

LATE NIGHT SNACKS

DIVERSIONS	DECK 3, FWD	11:00 PM - 12:00 MID
ICE CREAM AT GOOFY'S GALLEY	DECK 9, AFT	7:00 PM - 11:00 PM
PINOCCHIO'S PIZZERIA	DECK 9, MID	9:30 PM - 12:00 MID
PROMENADE LOUNGE	DECK 3, AFT	11:00 PM - 12:00 MID

ADDED FEATURES

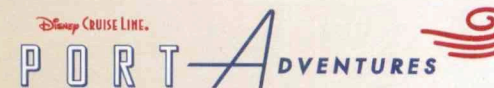
BEVERAGE STATION	DECK 9, AFT	24 HOURS
ROOM SERVICE	DIAL 6801 OR 6802	24 HOURS

ENTERTAINMENT - LOUNGES - BARS

Adults must be 21 and older to consume alcoholic beverages.

CADILLAC LOUNGE (18+)	DECK 3, FWD	5:30 PM - 12:00 MID
COVE CAFE (18+)	DECK 9, MID	12:00 PM - 12:00 MID
DIVERSIONS (18+ AFTER 9:00 PM)	DECK 3, FWD	4:30 PM - 12:00 MID
INTERNET CAFE	DECK 3, AFT	24 HOURS
OUTLOOK CAFE (18+)	DECK 10, MID	12:00 PM - 12:00 MID
PINOCCHIO'S PIZZERIA	DECK 9, MID	12:00 PM - 12:00 MID
PRELUDES	DECK 4, FWD	5:45 PM - 6:15 PM
		8:00 PM - 8:30 PM
PROMENADE LOUNGE (FAMILY)	DECK 3, AFT	12:00 PM - 12:00 MID
SIGNALS (18+)	DECK 9, FWD	12:00 PM - 10:00 PM
STUDIO SEA	DECK 4, MID	SHOWTIMES
WAVEBANDS (18+)	DECK 3, FWD	7:30 PM - 2:00 AM

Consumers who order raw or partially cooked, ready-to-eat food of animal origin, are hereby informed that the food is not sufficiently cooked to ensure its safety.



Explore and more with our carefully selected Port Adventures. Pass by the Port Adventures Desk, Deck 3, Midship to find out more.