

PERSONAL NAVIGATOR



WEDNESDAY, JUNE 19, 2013

Sunrise: 5:44 a.m. Sunset: 6:58 p.m.

Evening Attire: Cruise Casual

All Ashore: 7:45 a.m.

All Aboard: 3:45 p.m.

Wednesday: Cloudy High: 78°F/26°C

Thursday: Partly Cloudy High: 80°F/27°C

ST. THOMAS

The Magic & Illusion of Kyle Knight & Mistie Knight Magic

WALT DISNEY THEATRE

Deck 3 & 4 Forward
6:15 P.M. & 8:30 P.M.



Assistance available at the Deck 3 entrance 30 minutes prior to show time.

St. Thomas

Port Information

Once largely occupied by Dutch-owned sugar cane plantations and pirates of the Caribbean, St. Thomas and St. John of the U.S. Virgin Islands are some of the most popular tropical tourist destinations in the world. A destination that boasts so many sites for sport, relaxation and leisure has a culture that is still influenced in ways by its agricultural and native past.

Two-thirds of the island of St. John, a short ferry ride from St. Thomas, is a National Park. Not only is this island the most beautiful it is also the most serene, surrounded by shimmering bays and beaches.

A place so celebrated today for its pristine tranquility and peaceful way of life was—for 150 years—a notorious pirate post before the islands were conquered by the Dutch West Indian Company.

The islands have seen a steady rise in tourism since, and today, there is an entire world of leisure and adventure to explore on St. Thomas and St. John.



Get ready for a jammin', slammin', splashin' good time at the new Disney Channel Poolside Jam Fest at Sea! Imagine all of your favorite Disney Channel music stars coming together for an afternoon of contests, great music, and hot videos all under the Caribbean sun!

Deck Stage,
Deck 11, Midship,
4:30 p.m.

Don't Miss:

Art of The Theme Show Tour (18+)

Pre-Book at Guest Services, Deck 3, Midship

Join us on a guided ship tour and discover the key ingredients that make the Disney Fantasy cruise ship one-of-a-kind.

Disney Animation: Persistence of Vision

D Lounge, Deck 4, Midship - 4:00 p.m.

Go behind the scenes at Walt Disney Animation Studios and learn the principles that make animation work, and try your hand at creating your own easy animation demonstration in this fun and fascinating enrichment program.

The Quest

D Lounge, Deck 4, Midship - 9:45 p.m.

Enjoy the wildest and wackiest scavenger team event on the seven seas!

80's Music Challenge (18+)

The Tube, Deck 4, Aft - 10:30 p.m.

"Moon Walk" back to the 80's, as we put your musical knowledge of the decade to the test.

DOCKING

The ship docks at Havensight Mall Dock, which is also known as West Indian Company Dock.

Disney Cruise Line



IMPORTANT INFORMATION

Please check your tour tickets for meeting times and locations. Visit the Port Adventures Desk, Deck 5, Midship for any questions.

DINNER MENU

Animator's Palate : Prince and Princess Menu
Enchanted Garden : Prince and Princess Menu
Royal Court : Prince and Princess Menu

DRINK OF THE DAY

Paradise (Alcoholic)
Princess Delight (Non Alcoholic)

IMPORTANT NUMBERS

Fire/Security: 7-3001
Medical Emergency: 7-3000
Health Center: 7-1923

FUN FOR ALL AGES HIGHLIGHTS

DISNEY TRIVIA

D Lounge, Deck 4, Midship - 3:15 p.m.

Navigate your way through another round of questions to test how much you really know about Disney.

DISNEY ANIMATION: PERSISTENCE OF VISION

D Lounge, Deck 4, Midship - 4:00 p.m.

Go behind the scenes at Walt Disney Animation Studios and learn the principles that make animation work, and try your hand at creating your own easy animation demonstration in this fun and fascinating enrichment program.

JAM FEST AT SEA

Deck Stage, Deck 11, Midship - 4:30 p.m.

Are you ready for a jammin' good time? Imagine your favorite Disney Channel music and stars coming together to create the biggest Jam Fest at Sea! Great music, cool music videos and hot dance moves that are off the charts. Come out to be part of the action!



PLAYHOUSE D LOUNGE

D Lounge, Deck 4, Midship - 5:00 p.m.

Calling our youngest of cruisers! Here is a special Playtime that is just for you. Come meet new friends and join in on the fun as your Cruise Staff team takes you through interactive activities made just for you!

OFFICER PIN TRADING

Preludes, Deck 3, Forward - 7:30 p.m.

Come trade pins with the officers of the Disney Fantasy.

THE QUEST

D Lounge, Deck 4, Midship - 9:45 p.m.

Enjoy the wildest and wackiest scavenger team event on the seven seas!

DISNEY KARAOKE

D Lounge, Deck 4, Midship - 11:15 p.m.

Be a singing superstar when you and your family take the stage and sing along to your favorite tunes.



ADULT ACTIVITY HIGHLIGHTS

SENSES SPA FITNESS CLASSES & SEMINARS



Sunrise Stretch - Donald's Pool - 7:00 a.m.

Pub Abs - Donald's Pool - 7:30 a.m.; Senses Fitness Center - 5:00 p.m.

Body Sculpt Boot Camp (Nom. Fee) - Senses Fitness Center - 8:00 a.m.

Core Conditioning Pilates - Senses Fitness Center - 4:00 p.m.

CLUB
18*21

CLUB 18*21 - ARR-CADE SOCIAL

Arr-cade, Deck 11, Aft - 5:00 p.m.

CLUB 18*21 - MIXER

O'Gills Pub, Deck 4, Aft - 10:00 p.m.

PUB QUIZ

O'Gills Pub, Deck 4, Aft - 1:00 p.m.

Join us as we test your knowledge against your fellow Guests at our Pub Quiz challenge.



POP!

The Tube, Deck 4, Aft - 10:00 p.m.



Have you been told you are full of useless information about pop culture? If the answer is "Yes", then you have what it takes to play the high energy game show all about the world of Pop!

80'S MUSIC CHALLENGE

The Tube, Deck 4, Aft - 10:30 p.m.

"Moon Walk" back to the 80's, as we put your musical knowledge of the decade to the test.

LONDON ROCKS

The Tube, Deck 4, Aft - 11:00 p.m.



Hop onboard and hit the dance floor as we take you on a ride through the charts, partying it up to some of the hottest British hits! With a special performance by the Underground Dancers.

80'S/90'S REMIX WITH GUEST DJ LIVITUP

The Tube, Deck 4, Aft - 11:30 p.m.

Join Guest DJ LivitUp, as he spins the tunes and remix the 80's & 90's!

MEGA RAFFLE JACKPOT BINGO

D Lounge, Deck 4, Midship

Card Sales - 7:15 p.m.

Game Starts - 7:30 p.m.

Join your Cruise Staff for family Bingo fun! Four cash prize games. Plus, great raffle prize packs to be won and free Disney goodies for all in attendance! Don't miss out on the fun!

YOUTH ACTIVITY HIGHLIGHTS

DINE & PLAY

A convenience for families dining at 8:15 p.m., our Youth Activities Counselors will be available at 9:15 p.m. at the entrance of Royal Court, Enchanted Garden and Animator's Palate dining rooms to bring registered children to join the fun in the Youth Activity areas.



Deck 5, Midship (7-1440)

(3-12 years old)

10:00 a.m. - 11:00 p.m.

LITTLE EINSTEIN'S ADVENTURE

3:30 p.m.

Your junior cruisers will have the time of their lives with this program inspired by their favorite show with fun activities guaranteed to make them feel like a little genius!

PLUTO'S PAJAMA PARTY

8:30 p.m.

Bring the little ones in their pajamas but there will be anything but sleep when Pluto and friends host the ultimate slumber party!



Deck 5, Midship (7-1445)

(3-12 years old)

7:30 a.m. - 1:00 a.m.

SUPER SLOPPY SCIENCE

3:30 p.m. & 9:45 p.m.

Join Professor Make-O-Mess in some of the most extreme experiments you will ever see in the world of Super Sloppy Science!

MAGIC SHOW

2:00 p.m.

The Magnificent Magician will demonstrate to you some of the best known magic tricks on the sea.



Deck 13, Midship (7-9743)

(11-14 years old)

10:00 a.m. - 1:00 a.m.

ESPN DREAM TEAM DRAFT DAY - BASEBALL

1:45 p.m.

Play ball! Join the "Commissioner" and engage in this interactive fantasy baseball draft unlike anything you've ever seen! Can YOU draft the greatest baseball team of All-Time?

GHOST VOYAGERS

10:15 p.m.

The ship has come upon some mysterious waters and strange things are afoot. Join a paranormal expert to help investigate the area and track down any evidence of ghostly beings on the ship.



Entrance on Deck 4, Forward (7-9418)

(14-17 years old)

12:00 p.m. - 2:00 a.m.

DISNEY ANIMATION: CARTOON PHYSICS

3:30 p.m.

Go behind the scenes at Walt Disney Animation Studios and see how flat drawings and pencil lines can come to life through basic techniques such as Stretch and Squash, and create your own "bouncing ball" animation exercise in this entertaining and fun enrichment program.

THAT'S HILARIOUS

9:00 p.m.

Ever wanted to show off your comedy skills? Then be a part of the cast for the crazy improv show "That's Hilarious" and put on a live show for your friends.

BUENA VISTA THEATRE

Today's Movies

OC - Open Captioning

DOLBY 3D



12:30 p.m.

Duration: 2 hr 07 min

Rating: PG



3:00 p.m.

Duration: 2 hr 10 min

Rating: PG-13

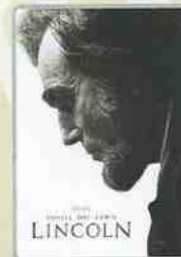
DOLBY 3D



5:45 p.m. & 8:15 p.m.

Duration: 1 hr 53 min

Rating: PG



10:30 p.m.

Duration: 2 hr 30 min

Rating: PG-13



Bring the family out to this interactive dance party featuring The Three Amigos. We will party with Donald Duck, learn Salsa, Merengue and have a Latin good time!

D Lounge,
Deck 4, Midship,
10:15 p.m.



Hop onboard and hit the dance floor as we take you on a ride through the charts, partying it up to some of the hottest British hits!

The Tube (18+),
Deck 4, Aft,
11:00 p.m.

YOUTH ACTIVITIES OPEN HOUSE

Open House is an opportunity for all to come and participate in a variety of exciting activities and free time in the Oceaneer Club, Oceaneer Lab, It's A Small World Nursery, Vibe and Edge throughout the cruise. During these times secured programming will still be offered in the other venue for those looking to check their children into care.

Disney's Oceaneer Club: 10:00 a.m. - 12:00 p.m.

Vibe: 11:00 a.m. - 12:00 p.m.

Edge: 9:00 a.m. - 10:00 a.m.

MORE TO ENJOY WHILE ONBOARD

PLAN YOUR NEXT CRUISE

Can't wait for your next Disney Cruise Line vacation? Don't wait to book your next cruise! You'll save 10%, receive up to a \$200 onboard credit, and pay a reduced deposit when you book today. Just visit the Future Cruise Sales Desk, Deck 4, Midship, or call 7-2848 for more information.



ADVENTURES BY DISNEY

Join us for a special presentation tomorrow to learn what traveling with Adventures by Disney is all about. See our Adventure Guide on Deck 4, Midship.



PORT & SHOPPING INFORMATION

St. Thomas is the most famous shopping port in the Caribbean. Take advantage of the Tax & Duty Free savings and stick to your shopping map while ashore. Enter the Diamond Raffle at Diamonds International store 1A on Main Street. Don't forget your shopping coupons at the gangway.



ONBOARD AIRLINE CHECK IN

If you would like to have your boarding passes printed for you onboard and have your luggage taken to the airport for you, register by midnight tonight. If you have Disney Cruise Line airport transfer to Orlando International Airport and fly with one of the participating airlines. Stop at Guest Services, Deck 3, Midship.

SURF @ SEA

\$0.75 per minute, or save money by buying blocks of time. \$55.00 for 100 minutes, \$100.00 for 250 minutes and \$150.00 for 500 minutes. Wireless information sheets are available at Guest Services, Deck 3, Midship.

Please note: Due to satellite connectivity, onboard internet service will be noticeably slower than you may be accustomed to and may at times be interrupted or unavailable.

ON DEMAND TV

Watch Disney movies, Hollywood features, ABC Shows, and even captioned content, plus much more "On Demand" for FREE in the comfort of your stateroom! Bookmark your movie and come back to watch it later. Press MENU on your stateroom television remote control, and follow the prompts.

Disney Cruise Line

PORT ADVENTURES

The Port Adventures Desk is open this morning for your last minute St. Thomas reservations. Let us take care of everything from beach breaks, St. Thomas Island tours and sailing adventures to neighboring Islands. Don't forget to reserve space for the trip to St. John and its beautiful Trunk Bay beach. For the more adventurous, join us for the Screamin' Eagle or one of the many Catamaran Sail and Snorkel excursions. Your friendly Port Adventures team is located on Deck 5, Midship.

SHOPPING

FRAGRANCE OF THE DAY

Stop by Whitecaps to test our selected fragrance today! Deck 3, Forward.

GODIVA CHOCOLATE

Did anyone say chocolate? Gourmet Belgian chocolate indulgence from Godiva Chocolatier. Whitecaps, Deck 3, Forward.

H₂O BATH COLLECTION

Treat yourself to the ultimate indulgence with H₂O bath products. H₂O offers shampoo, conditioner, lip balm, hydrating body lotion and after sun care. Available in Whitecaps, Deck 3, Forward.

OFFICER PIN TRADING

Come and trade pins with the officers of the Disney Fantasy at 7:30 p.m. in Preludes, Deck 3, Forward.

LIVE AUCTION

Any art lovers onboard? Don't miss out on this week's onboard live auctions held at the Tube, Deck 4, Aft, where you'll have the chance to claim and take home artwork from a wide spectrum of internationally renowned artists. Also take the time to stroll through the Vista Gallery, Deck 4, Midship, which is sure to please any art and Disney fan.

BIBBIDI BOBBIDI BOUTIQUE

Make your Princesses' Fantasies come true with the Fantasy package. She receives a headband, tutu and T-shirt. Bibbidi Bobbidi Boutique, Deck 5, Midship.



SENSES
SPA & SALON

PAMPER PACKAGE

- 50 minute Full Body Massage
- Foot & Ankle Massage
- Indian Scalp Massage
- 25 Minute Booster Facial

ONLY \$149

Call Senses Spa & Salon, 7-1465

TODAY'S SHOPPING SPECIAL

Stop by Whitecaps to try on the world's most memorable white diamond pieces and commemorate your cruise.

Whitecaps, Deck 3, Forward.

WHITECAPS

Sophia Fiori



Shutters

GET THE PICTURE!

We offer digital packages to fit your budget and you can select images in comfort of your home & send them to your friends or upload them on a social media sites.

*Terms and conditions apply.

Visit Shutters on Deck 4 Midship for more information.

**Please note that photos are available for viewing on our interactive photo kiosks approximately five hours after being taken and are only available for purchase during this cruise.*

IMPORTANT INFORMATION

Security Notice

All Guests (including children) who wish to disembark the ship are required to present their Key to the World card at the gangway. A photo ID is also required for those Guests who are 18 years of age or older. Guests under the age of 18 are required to have a Parent, Guardian or other responsible adult sign an authorization form at the time it is given out if they wish to go ashore unaccompanied. Authorization forms are available at the gangways and Guest Services.

Please Note:

Please remember to use plenty of sunscreen & mosquito[®] Insect repellent when visiting ashore.

Cold and Flu Reminder

Please wash hands frequently and thoroughly, particularly before meals. Contact the Health Center by dialing 7-1923, should anyone in your party become ill.

Corridor Quiet Hours

As a courtesy to all our Guests, please recognize quiet hallway hours from 10:00 p.m. to 8:00 a.m.

Inclement Weather

For the safety of all Guests, outdoor events may be changed due to unforeseen weather conditions.

Environmental Message

With Disney's commitment to the Environment, please refrain from throwing anything over the Ship's side. Thank you!

No Reserved Seats Policy

As a courtesy to all our Guests, we kindly advise that the saving of seats is not permitted in the Walt Disney Theatre, and the saving of the sun loungers is not permitted on Deck 11, 12, and 13. Items left unattended will be returned to lost and found at Guest Services, Deck 3 Midship.

Smoking

For the comfort of our guests the following areas are designated as Smoking areas: - Promenade Deck (Deck 4), smoking is permitted Port Side, Aft only from 6:00 p.m. to 6:00 a.m.
- Currents - Deck 13, Forward, Port Side.
- Meridian Bar - Deck 12, Aft, Port Side, outside.
- Smoking is permitted on stateroom verandahs. Smoking is prohibited inside all guest staterooms. Guests found smoking in their staterooms will be charged a \$250 stateroom recovery fee. Electronic cigarettes may only be used in designated smoking areas.

Walt Disney Theatre

Theatrical performances may use artificial fog, strobe lights, pyrotechnics and other special effects. For the safety of our performers and the comfort of those around you, the use of any photographic, video recording device or any electronic equipment is prohibited.

Verandah Safety

Please do not leave any combustible materials on your balcony when not present in your stateroom for safety reasons.

Due to port regulations, when the ship is docked, the stores will remain closed.

Morning	8:30	8:45	9:00	9:15	9:30	9:45	10:00	10:15	10:30	10:45	11:00	11:15	11:30	11:45	12:00	12:15	12:30	12:45	1:00	1:15	1:30				
FUNNEL VISION			A Bug's Life (G) Funnel Vision										Monsters, Inc. (G) Funnel Vision							Toy Story (G) Funnel Vision > 1:51 p.m.					
BUENA VISTA THEATRE																		Oz The Great and Powerful (PG) - Open Captioning Duration: 2 Hours 07 Minutes > 2:37 p.m.							
CHARACTER	Please Refer to Character Board in Lobby Atrium for Today's Character Appearances																								
FUN FOR ALL AGES	Port Adventures - Please check your tickets for meeting times and locations										Open House Vibe														
	Open House Edge					Open House Disney's Oceaneer Club					Midship Detective Agency Deck 2 & 5, Midship														
	Board Games Available in O'Gills Pub																								
ADULTS	Friends of Bill W. Outlook, Deck 14, Mid																	Pub Quiz O'Gills Pub							
	Books and Magazines available in Cove Cafe																								
VIBE 14-17 YEARS OLD										Open House					Games Galore					Ice Cream Social					
EDGE 11-14 YEARS OLD	Open House					Game Challenge										Animation Cells					Four Square				
OCEANEER LAB 3-12 YEARS OLD	Morning Stretches		Human Bingo			GAGA Ball					Detective School					Lunch					Float Fun Trivia				
													Wii Challenge								Animation Cells				
OCEANEER CLUB 3-12 YEARS OLD							Open House																Magic Playfloor		
							Magic Playfloor									Flittin' Around									

Afternoon	1:45	2:00	2:15	2:30	2:45	3:00	3:15	3:30	3:45	4:00	4:15	4:30	4:45	5:00	5:15	5:30	5:45	6:00	6:15	6:30	6:45		
FUNNEL VISION		Cars (G) Funnel Vision								Jam Fest at Sea Funnel Vision				Toy Story 2 (G) Funnel Vision								> 7:17 p.m.	
BUENA VISTA THEATRE							Iron Man 3 (PG-13) Duration: 2 Hours 10 Minutes						Wreck-It Ralph (PG) Duration: 1 Hours 53 Minutes						> 7:38 p.m.				
CHARACTER												Mickey Dk 4, Balcony	Tinker Bell Ariel Lobby Atrium (V) Lobby Atrium (P)	Mickey Lobby Atrium (H)	Hook & Smee Dk 4, Balcony	Lilo, Stitch Preludes	Snow White Lobby Atrium (P)						
FUN FOR ALL AGES		XBox® Kinect™ John Madden O'Gills Pub				Disney Trivia D Lounge				Deck Stage		Playhouse D Lounge D Lounge						 The Magic & Mischief of Kyle Knight & Mistie - Kinky Mages Walt Disney Theatre					
	Board Games Available in O'Gills Pub										Disney Animation: Persistence of Vision D Lounge				Live Music with Andrea and Rafaela Lobby Atrium								
ADULTS			Art of The Theme Show Tour Pre-Book at Guest Services								Club 18*21 - Am-cade Social Arr-cade		ESPN Dream Team Draft Day - Basketball O'Gills Pub										
	Books and Magazines available in Cove Cafe								Core Conditioning Pilates Senses Fitness Center				Live Music with Ash & Katie Deck 12, Forward										
VIBE 14-17 YEARS OLD	Ice Cream Social	Matinee Movie				Hold The Phone		Disney Animation: Cartoon Physics		Create A Picture Frame		Create a Postcard						ESPN Dream Team Draft Day - Football					
EDGE 11-14 YEARS OLD	ESPN Dream Team Draft Day - Baseball		Digi Hunt		Countdown				Dodgeball				Karaoke						Celebrity Heads				
OCEANEER LAB 3-12 YEARS OLD	Animation Cells		Marshmallow Olympics		Trivia Challenge				Elephant Soccer										Pictionary				
	Magic Show						Super Sloppy Science												Magic Playfloor				
OCEANEER CLUB 3-12 YEARS OLD	Matinee Movie						Little Einstein's Adventure		Make Your Own Wand										Cruisin' with Crush				
			All About Me																				
OUT AND ABOUT			Shuffleboard Tournament Deck 4, Starboard Side																				

Evening	7:00	7:15	7:30	7:45	8:00	8:15	8:30	8:45	9:00	9:15	9:30	9:45	10:00	10:15	10:30	10:45	11:00	11:15	11:30	11:45	12:00
FUNNEL VISION					The Incredibles (PG) Funnel Vision								Ratatouille (G) Funnel Vision								
BUENA VISTA THEATRE					Wreck-It Ralph  (PG) Duration: 1 Hours 53 Minutes								Lincoln (PG-13) Duration: 2 Hours 30 Minutes > 1:00 a.m.								
CHARACTER	Peter Pan <small>Lobby Atrium (P)</small>	Tinker Bell <small>Lobby Atrium (V)</small>	Snow White <small>Dk 4, Balcony</small>		Lilo, Stitch <small>Lobby Atrium (P)</small>						Tinker Bell <small>Lobby Atrium (V)</small>	Cinderella <small>Lobby Atrium</small>	Ariel <small>Dk 4, Balcony</small>								
FUN FOR ALL AGES	Bingo Pre Sales	Mega Raffle Jackpot Bingo <small>D Lounge</small>				 Walt Disney Theatre				The Quest <small>D Lounge</small>		 <small>D Lounge</small>		Family Dance Party <small>D Lounge</small>		Disney Karaoke <small>D Lounge</small>					
		So You Think You Know Your Family? <small>The Tube</small>																			
		Officer Pin Trading <small>Preludes</small>								Live Music with Andrea and Rafaela <small>Lobby Atrium</small>				Live Piano with Gayla Smith <small>Lobby Atrium</small>							
ADULTS	Live Guitar with John Kevish <small>Currents</small>		Stanley Cup Finals: Chicago vs. Boston <small>O'Gills Pub (Subject to Satellite Availability)</small>								POP! <small>The Tube</small>		80's Music Challenge <small>The Tube</small>		London Rocks <small>The Tube</small>		80's/90's Remix with Guest DJ LivitUp <small>The Tube</small>				
	Live Piano with Gayla Smith <small>La Piazza</small>						Live Music <small>La Piazza</small>		Club 18*21 - Mixer <small>O'Gills Pub</small>		Live Guitar with John Kevish <small>O'Gills Pub</small>		Live Music with Ash & Katie <small>La Piazza</small>								
VIBE 14-17 YEARS OLD	Pictionary				Teen Choice				That's Hilarious				Smoothie Time		Gotcha Registration		Gender Wars				
EDGE 11-14 YEARS OLD	Anyone Can Cook		GAGA Ball		XBox® Kinect™ Tournament				Gender Wars		Ghost Voyagers		Movie Night								
OCEANEER LAB 3-12 YEARS OLD	 Charades		Picture This		Create A Picture Frame		Wii Challenge		 Super Sloppy Science				Game Challenge								
	Make a Crown				 Parachute Games		 GAGA Ball				Stop The Boat										
OCEANEER CLUB 3-12 YEARS OLD	 Hide and Seek		 Once Upon a Time				Monster's Game Galore		Story Time in Andy's Room		Bingo		Coloring Corner								
			Crafts Galore				 Pluto's Pajama Party														
OUT AND ABOUT	A to Z Scavenger Hunt <small>Eye Scream</small>																				

Symbol for activities that will be repeated during the cruise

Youth Activities Open House

FOLD

Fold along the dotted lines and take me with you so you don't miss any of the fun!

FOLD

IN THE SPOONPORT SERIES

CLAMP UP SERIES

CLAMP UP SERIES

WEDNESDAY, JUNE 19, 2013 - ST. THOMAS

BUENA VISTA THEATRE

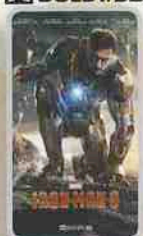
CC - Open Captioning

DDOLBY.3D

DDOLBY.3D



12:30 p.m.
Duration:
2 hr 07 min
Rating: PG



3:00 p.m.
Duration:
2 hr 10 min
Rating: PG-13



5:45 & 8:15 p.m.
Duration:
1 hr 53 min
Rating: PG



10:30 p.m.
Duration:
2 hr 30 min
Rating: PG-13

Character Appearances

MICKEY MOUSE
Deck 4 Balcony, Midship
4:15 p.m.
Lobby Atrium (H)
5:00 p.m. & 7:15 p.m.

TINKER BELL
Lobby Atrium (V)
4:30 p.m., 5:30 p.m.
7:30 p.m. & 9:30 p.m.

PINOCCHIO
Deck 4 Balcony, Midship
4:45 p.m.
Lobby Atrium (P) - 7:45 p.m.
Preludes - 10:00 p.m.

ARIEL
Lobby Atrium (P) - 4:45 p.m.
Deck 4 Balcony, Midship
10:00 p.m.

CAPTAIN HOOK & MR SMEE
Deck 4 Balcony, Midship
5:15 p.m., 7:15 p.m. & 9:30 p.m.

PETER PAN
Lobby Atrium (P)
5:15 p.m. & 7:15 p.m.

LILO & STITCH
Preludes
5:30 p.m. & 9:30 p.m.
Lobby Atrium (P) - 8:15 p.m.

CINDERELLA
Lobby Atrium
5:30 p.m. & 9:45 p.m.

CHIP & DALE
Lobby Atrium (H) - 5:30 p.m.

ALADDIN & GENIE
Deck 4 Balcony, Midship
5:45 p.m. & 8:15 p.m.
Lobby Atrium (P) - 10:00 p.m.

SNOW WHITE & DOPEY
Lobby Atrium (P)
5:45 p.m. & 9:30 p.m.
Deck 4 Balcony, Midship
7:45 p.m.

MINNIE MOUSE
Lobby Atrium (H) - 7:45 p.m.

DONALD DUCK
Lobby Atrium (H) - 9:30 p.m.

GOOFLY
Lobby Atrium (H) - 10:00 p.m.

(H) Hallway - (S) Starboard Side - (P) Port Side - (V) Vestibule

For details of daily Disney character appearances, refer to the character line in your Navigator Grid or the digital character board in the Lobby Atrium.

YOUTH ACTIVITIES THEMED EXPERIENCES

CLUBHOUSE SERIES
focuses on movement and features content which appeals to younger children.

JUMP UP! SERIES
includes large ground games & movement-oriented activities.

IN THE SPOTLIGHT SERIES
focuses on children's stage presence with lots of activities and enthusiasm.

STORYBOOK SERIES
is designed with a strong connection to the Disney classic stories.

CREATE & INVENT SERIES
will have a tactile focus allowing children to create and admire their work.

OLVE IT! SERIES
are less active, but will challenge children with problem/solutions-based activities.

YOUTH ACTIVITIES OPEN HOUSE

A non-secured program with activities for families, adults and children of all ages to enjoy together.

SHIP DIRECTORY

YOUTH ACTIVITIES

DISNEY'S OCEANEER CLUB	DECK 5, MID	10:00 AM - 11:00 PM
DISNEY'S OCEANEER LAB	DECK 5, MID	7:30 AM - 1:00 AM
EDGE	DECK 13, MID	10:00 AM - 1:00 AM
VIBE	DECK 4, FWD	12:00 PM - 2:00 AM
IT'S A SMALL WORLD NURSERY	DECK 5, MID	7:30 AM - 11:00 PM

RECREATION

AQUADUCK	DECK 12, MID	9:00 AM - 11:00 PM
AQUALAB	DECK 12, AFT	1:00 PM - 7:00 PM
DONALD'S POOL	DECK 11, MID	6:00 AM - 12:00 MID
GOLF/SPORTS SIMULATORS	DECK 13, AFT	9:00 AM - 6:00 PM
GOOFLY GOLF	DECK 13, AFT	8:00 AM - 10:00 PM
GOOFLY'S SPORTS DECK	DECK 13, AFT	8:00 AM - 6:00 PM
MICKEY'S POOL	DECK 11, MID	6:00 AM - 11:00 PM
MICKEY'S SLIDE	DECK 11, MID	9:00 AM - 6:00 PM
MIDSHIP DETECTIVE AGENCY	DECK 2 & 5, MID	9:00 AM - 10:00 PM
NEMO'S REEF	DECK 11, MID	9:00 AM - 7:00 PM
PORT ADVENTURES DESK	DECK 5, MID	7:00 AM - 11:00 AM
QUIET COVE POOL	DECK 11, FWD	6:00 AM - 12:00 MID
SATELLITE FALLS	DECK 13, FWD	6:00 AM - 6:00 PM
SENSES FITNESS CENTER	DECK 11, FWD	6:30 AM - 10:00 PM

GENERAL INFORMATION

ARR-CADE	DECK 11, AFT	24 HOURS
ADVENTURES BY DISNEY	DECK 4, MID	3:00 PM - 5:00 PM 7:30 PM - 9:00 PM
DISNEY VACATION CLUB	DECK 4, MID	5:30 PM - 10:00 PM
FUTURE CRUISE SALES DESK	DECK 4, MID	9:00 AM - 10:00 AM 4:00 PM - 6:00 PM 7:30 PM - 10:00 PM
GUEST SERVICES	DECK 3, MID	24 HOURS
MEDICAL HEALTH CENTER	DECK 1, FWD	9:30 AM - 11:00 AM 4:30 PM - 7:00 PM
PORT & SHOPPING DESK	DECK 4, MID	7:30 PM - 8:30 PM
PRELUDES	DECK 3, FWD	5:45 PM - 6:30 PM 8:00 PM - 8:45 PM
SENSES SPA AND SALON	DECK 11, FWD	8:00 AM - 10:00 PM
SHUTTERS PHOTO GALLERY	DECK 4, MID	5:00 PM - 10:30 PM
SHUTTERS DIGITAL	DECK 4, MID	24 HOURS

SHOPPING

BIBBIDI BOBBIDI BOUTIQUE	DECK 5, MID	9:00 AM - 9:00 PM
MICKEY'S MAINSAIL	DECK 3, FWD	4:30 PM - 11:00 PM
QUACKS	DECK 11, MID	
SEA TREASURES	DECK 3, FWD	4:30 PM - 11:00 PM
VISTA GALLERY	DECK 4, MID	6:00 PM - 10:00 PM
WHITECAPS	DECK 3, FWD	4:30 PM - 11:00 PM
WHOZITS & WHATZITS	DECK 11, MID	

DINNER MENU
 Animator's Palate: Prince & Princess
 Enchanted Garden: Prince & Princess
 Royal Court: Prince & Princess
 Dining Times: 5:45 p.m. & 8:15 p.m.

DRINK OF THE DAY
 Paradise (Alcoholic)
 Princess Delight (Non Alcoholic)

WEATHER FORECAST
 Wednesday: Cloudy
 High: 78°/72° F
 Thursday: Partly Cloudy
 High: 80°/72° F

Evening Attire: Cruise Casual

DINING & LOUNGES

BREAKFAST

CABANAS CONTINENTAL	DECK 11, AFT	6:15 AM - 6:45 AM
CABANAS	DECK 11, AFT	6:45 AM - 10:30 AM
ENCHANTED GARDEN	DECK 2, MID	7:30 AM - 9:30 AM
ROYAL COURT	DECK 3, MID	8:00 AM - 9:30 AM

LUNCH

CABANAS	DECK 11, AFT	12:00 PM - 2:15 PM
FILLMORE'S FAVORITES	DECK 11, MID	11:00 AM - 6:00 PM
LUIGI'S PIZZA	DECK 11, MID	11:00 AM - 6:00 PM
ROYAL COURT	DECK 3, MID	12:00 PM - 1:30 PM
TOW MATER'S GRILL	DECK 11, MID	11:00 AM - 11:00 PM

DINNER

ANIMATOR'S PALATE	DECK 3, AFT	5:45 PM & 8:15 PM
ENCHANTED GARDEN	DECK 2, MID	5:45 PM & 8:15 PM
ROYAL COURT	DECK 3, MID	5:45 PM & 8:15 PM
CABANAS TABLE SERVICE	DECK 11, AFT	6:30 PM - 8:30 PM
PALO (18+)	DECK 12, AFT	6:00 PM - 8:30 PM
REMY (18+)	DECK 12, AFT	6:00 PM - 8:30 PM

LATE NIGHT SNACKS

LA PIAZZA (18+)	DECK 4, AFT	10:45 PM - 11:45 PM
LUIGI'S PIZZA	DECK 11, MID	9:30 PM - 12:30 AM

ADDED FEATURES

BEVERAGE STATION	DECK 11, MID	24 HOURS
EYE SCREAM	DECK 11, MID	11:00 AM - 11:00 PM
ROOM SERVICE	DIAL 0	24 HOURS

ENTERTAINMENT - LOUNGES - BARS

Adults must be 21 and older to consume alcoholic beverages.

BON VOYAGE	DECK 3, MID	2:30 PM - 10:30 PM
COVE BAR (18+)	DECK 11, FWD	11:30 AM - 11:00 PM
COVE CAFE (18+)	DECK 11, FWD	7:00 AM - 12:00 MID
CURRENTS (18+)	DECK 13, FWD	11:00 AM - 11:00 PM
D LOUNGE	DECK 4, MID	SHOWTIMES
FROZONE TREATS	DECK 11, MID	1:00 PM - 11:00 PM
LA PIAZZA	DECK 4, AFT	3:00 PM - 12:00 MID
MERIDIAN (18+)	DECK 12, AFT	5:00 PM - 12:00 MID
O'GILLS PUB (18+ AFTER 9:00 PM)	DECK 4, AFT	3:00 PM - 12:00 MID
OOH LA LA (18+)	DECK 4, AFT	5:00 PM - 12:00 MID
OUTLOOK	DECK 14, MID	SUNSET TIMES
SKYLINE (18+)	DECK 4, AFT	5:00 PM - 12:00 MID
THE TUBE (18+)	DECK 4, AFT	10:00 PM - 2:00 AM
VISTA CAFE	DECK 4, MID	7:30 AM - 11:00 PM
WAVES	DECK 12, AFT	12:00 PM - 6:30 PM

Consumers who order raw or partially cooked, ready-to-eat food of animal origin, are hereby informed that the food is not sufficiently cooked to ensure its safety.

PORT ADVENTURES IMPORTANT INFORMATION

Please check your tour tickets for meeting times and locations.
Visit the Port Adventures Desk, Deck 5, Midship, for any questions.

All Ashore: Approx. 7:45 a.m.
All Aboard: 3:45 p.m.

SHIP'S AGENT IN ST. THOMAS	IMPORTANT NUMBERS
Virgin Port Services, 1001 Blackbeard's Hill, St. Thomas, USVI 00802 Tel.: 340-775-1151, 305-608-1908	Fire/Security: 7-3001 Medical EMERGENCY: 7-3000 Health Center: 7-1923