

# PERSONAL NAVIGATOR

SATURDAY, JUNE 15, 2013

Sunrise: 6:24 a.m. Sunset: 8:21 p.m.

Evening Attire: Cruise Casual

All Aboard: 3:45 p.m.

Saturday: Sunny High: 78°F/26°C

Sunday: Partly Cloudy High: 80°F/27°C

PORT CANAVERAL, FLORIDA

Join us tonight in the beautiful Walt Disney Theatre for a magical, musical journey through the wonderland of the Disney Fantasy featuring the Walt Disney Theatre Cast; World Famous Disney Characters and the Comedy and Music of John Charles.

**WALT DISNEY THEATRE**  
**DECK 3 & 4, FORWARD**  
**6:15 p.m. & 8:30 p.m.**



Assistance available at the entrance to the Walt Disney Theatre 30 minutes prior to show time.

## Welcome Aboard!

### Your Stateroom & Luggage

Staterooms will be ready at 1:30 p.m. Stateroom hosts will deliver luggage throughout the day until 5:30 p.m.

### Staterooms with Bunk Beds

Bunk beds are recessed into the ceiling and will be prepared during evening turndown service by your Stateroom Host/ess.

### To Change Dining Assignment

Requests for different seating times will be taken today:

- 1:00 - 3:15 p.m. - Royal Court
- 3:15 - 5:00 p.m. - Please dial 7-1831/ 7-1832/ 7-1833

### Palo & Remy Dining Reservations

Are required and will be taken on a first come basis today at:

- 1:00 p.m. - 3:15 p.m. Palo & Remy
- 3:15 - 5:00 p.m. Please leave a voice mail at 7-9735 for Palo or 7-9734 for Remy.

### Dinner

- 5:45 p.m. - First seating
- 8:15 p.m. - Second seating

Please check your dining tickets for details of your dining rotation, and bring them to your specific dining location. There is no need to wait in line prior to dinner. Dining Rooms open at designated seating times and your table is reserved each night of your cruise.

**SAILING AWAY**

It's time to go Sailing Away! Join Mickey and Minnie, along with Tinker Bell and the rest of the gang, as they welcome you aboard the Disney Fantasy.

**Deck Stage,  
Deck 11, Midship,  
4:30 p.m.**

## Don't Miss:

### Disney Fantasy - Talent Show Sign Ups

*Guest Services, Deck 3, Midship*

Does your family have what it takes to make their performing dreams come true? Find out at the Disney Fantasy Family Talent Show - dare to show your family's flair! Pre-register at the Guest Services Desk, Deck 3, Midship. Your last chance to sign up is at 4:00 p.m. on Thursday.

### Walking Ship Tour

*Meet at Preludes, Deck 3, Forward - 1:00 p.m. & 2:00 p.m.*

Enjoy the beauty of the Disney Fantasy with your Cruise Staff in this guided tour.

### Mirror, Mirror

*D Lounge, Deck 4, Midship - 7:30 p.m. & 9:45 p.m.*

Head to D Lounge for the fairest game show of them all, Mirror, Mirror featuring the Magic Mirror and everyone's favorite dwarf, Dopey.

### Match Your Mate (18+)

*The Tube, Deck 4, Aft - 10:30 p.m.*

It's time to play everyone's favorite couples game show - Match Your Mate!

*Shutters*

Visit Shutters for all your photographic needs, from Digital cameras, batteries and accessories. All photos taken during this cruise will be available for viewing on our photo kiosks at Shutters Digital, as well as in your photo folder at Shutters, Deck 4, Midship.

## DINNER MENU

Animator's Palate: Pacific Rim Cuisine  
Enchanted Garden: Continental Market  
Royal Court: French Dinner

## DRINK OF THE DAY

Ooh La La (Alcoholic)  
Purple Basil Lemonade  
(Non Alcoholic)

## IMPORTANT NUMBERS

Fire/Security: 7-3001  
Medical Emergency: 7-3000  
Health Center: 7-1923



# FUN FOR ALL AGES HIGHLIGHTS

## FAMILY DANCE PARTY WITH GUEST DJ LIVITUP

*The Tube, Deck 4, Aft - 7:15 p.m.*

Bring the whole family and dance your cares away to some of your favorite hits with our Guest DJ LivItUp!

## FAMILY SUPERSTAR KARAOKE

*D Lounge, Deck 4, Midship - 10:15 p.m.*

Join your Cruise Staff in D Lounge tonight and sing along to your favorite song - fun for everyone.

## CRUISE HIGHLIGHTS

**Saturday**

### PORT CANAVERAL

*All Aboard: 3:45 pm*

*Port Departure: 5:00 pm*

*Attire: Cruise Casual*

### A FANTASY COME TRUE

*WELCOME SHOW*

*Walt Disney Theatre*

*6:15 p.m. & 8:30 p.m.*

**Sunday**

### DAY AT SEA

*Attire: Formal*

### DISNEY'S ALADDIN

*Walt Disney Theatre*

*3:00, 6:15 & 8:30 p.m.*

**Monday**

### DAY AT SEA

*Attire: Cruise Casual*

### DISNEY WISHES

*Walt Disney Theatre*

*3:00, 6:15 & 8:30 p.m.*

**Tuesday**

### ST. MAARTEN

*All Ashore: 8:00 am*

*All Aboard: 6:30 pm*

*Attire: Pirate or Cruise Casual*

### IRON MAN 3 - (PG-13)

*DOLBY 3D*

*Walt Disney Theatre*

*5:15 p.m. & 8:15 p.m.*

**Wednesday**

### ST. THOMAS & ST. JOHN

*All Ashore: 7:45 am*

*All Aboard: 3:45 pm*

*Attire: Cruise Casual*

### SHOWTIME:

*KNIGHT MAGIC*

*Walt Disney Theatre*

*6:15 p.m. & 8:30 p.m.*

**Thursday**

### DAY AT SEA

*Attire: Semi Formal*

### DISNEY'S BELIEVE

*Walt Disney Theatre*

*3:00, 6:15 & 8:30 p.m.*

**Friday**

### CASTAWAY CAY

*All Ashore: 9:45 am*

*All Aboard: 4:45 pm*

*Attire: Cruise Casual*

### AN UNFORGETTABLE

*JOURNEY*

*Walt Disney Theatre*

*6:15 p.m. & 8:30 p.m.*

Subject to change.



# ADULT ACTIVITY HIGHLIGHTS



## FITNESS CLASSES

*Senses Spa and Salon has a variety of seminars and fitness classes available throughout the cruise.*

## BEVERAGE SEMINARS

*Your Beverage team has a host of tastings and seminars to entertain and educate you.*

*Stop by La Piazza, Deck 4, Aft to pre-book these experiences (nominal fee applies).*

Mixology - Wine Tasting - Martini Tasting - Champagne Tasting - Beer Tasting - Cognac Tasting - Whisky Tasting - Italian Liqueur Tasting - Tequila & Margarita Tasting - Wine and Chocolate Tasting - Rum Tasting

## ART OF THE THEME SHOW TOUR

*18+ Meet at Meridian, Deck 12, Aft - Pre-Book at Guest Services*

*Sunday, Monday, Wednesday and Thursday*

Join us on a guided ship tour and discover the key ingredients that make the Disney Fantasy one-of-a-kind. Pre-book at Guest Services, Deck 3, Midship.

## FEATURED VARIETY ACTS THIS VOYAGE



### THE COMEDY & JUGGLING OF MIKE PRICE

Mike Price's ability to invent and perform the most technically difficult tricks in the world allowed him to capture the gold medal at the International Juggling Championships in Montreal, Canada. Mike has performed his show at some of the hottest and most famous nightclubs throughout the United States and Europe, including the Club Island Paradise Ibiza. He has traveled and performed at more shows than most jugglers do in a lifetime and he has made people from all over the world and from all age groups become fans of juggling.



### THE COMEDY & MUSIC OF JOHN CHARLES

John Charles has been performing all around the United States, Canada and Europe for most of his professional life and has established himself as one of the most sought after entertainers. With just his guitar, a piano, and his incredible singing voice, John will amaze you with his ability to combine music, comedy and audience interaction.



### THE MAGIC & ILLUSION OF KNIGHT MAGIC

Las Vegas based illusionists, Kyle Knight and Mistie, have traveled the world sharing their own unique style of illusions, and giving their audiences a completely different perspective of the art of magic. Together Kyle and Mistie utilize video screens for a close of up view of sleight of hand, demonstrate amazing mental miracles, and perform their illusions with a bold and modern style. They surprise their audience with a different approach to magic as they reveal guarded secrets, perform impossible feats while being totally surrounded, and allow their audience to get up close and involved in ways they've never seen before.



### THE COMEDY & VENTRILOQUISM OF LYNN TREFZGER

Lynn is a ventriloquist/comedienne with a trunk full of zany characters. Audiences are treated to Lynn's vocal illusion talents, when they may meet a drunken and lovable camel, a grumpy old man, a feisty little girl, and may even see some other audience members who are brought up for the action! Her off-the-wall audience interplay is tailored for both family and adult audiences.



### GUEST DJ LIVITUP

As one of Miami's hottest entertainers, DJ LivItUp is young, versatile and has a great passion for music. With 9 years of experience, LivItUp has rocked events for crowds from South America, Europe, and the Caribbean. His high energy keeps people on their feet and ready to have a good time. When it comes to Disney, Aladdin is LivItUp's favorite character.



# YOUTH ACTIVITIES HIGHLIGHTS



Deck 5, Midship (7-5864) 12:00 p.m. - 3:00 p.m., 4:30 p.m. - 11:00 p.m.  
Infants and Toddlers can enjoy toys and activities at It's A Small World Nursery. Reservations are first come, first served so please stop by!



Deck 5, Midship (7-1440)  
12:00 p.m. - 3:00 p.m., 4:30 p.m. - 12:00 Mid.



Deck 5, Midship (7-1445)  
12:00 p.m. - 3:00 p.m., 4:30 p.m. - 12:00 Mid.

## REGISTRATION FOR 3-12 YEAR OLDS

Meet the Youth Activities Team in the Oceaneer Lab and Oceaneer Club, complete your registration & learn all about the Themed Experiences this cruise!



**CLUBHOUSE SERIES** - The Clubhouse Themed Experiences focus on movement and feature content which appeals to younger children. *Recommended seven years and younger.*



**STORYBOOK SERIES** - The Storybook Series Themed Experiences are designed with a strong connection to the Disney classic stories.



**JUMP UP! SERIES** - The Let's Move! Themed Experiences will include large ground games & movement-oriented activities.



**CREATE & INVENT SERIES** - The Create & Invent Themed Experiences will have a tactile focus allowing children to create and admire their work.



**IN THE SPOTLIGHT SERIES** - The In The Spotlight Themed Experiences focus on children's stage presence with lots of activities and enthusiasm. *Recommended seven years and older.*



**SOLVE IT! SERIES** - The Solve It! Themed Experiences are less active, but will challenge children with problem/solutions-based activities. *Recommended seven years and older.*



**OUT AND ABOUT SERIES** - Set outside secured Youth Activities spaces, very active, appealing to Tweens. *Recommended 8 - 14 years.*



**YOUTH ACTIVITIES OPEN HOUSE** - A non-secured program with activities for families, adults and children of all ages to enjoy together.

## DINE & PLAY

A convenience for families dining at 8:15 p.m., our Youth Activities Counselors will be available at 9:15 p.m. at the entrance of Royal Court, Enchanted Garden and Animator's Palate dining rooms to bring registered children to join the fun in the Youth Activity areas.

## YOUTH ACTIVITIES OPEN HOUSE

Open House is an opportunity for all to come and participate in a variety of exciting activities and free time in It's A Small World Nursery, Oceaneer Club, Lab, Edge and Vibe throughout the cruise. During these times secured programming will still be offered in the other venue for those looking to check their children into care.

Deck 13, Midship (7-9743) - 12:00 p.m. - 3:00 p.m., 4:30 p.m. - 12:00 Mid.

## (11-14 YEAR OLDS)

Edge is an interactive play space where tweens can play video games, watch television and participate in arts and crafts with kids their own age.

## TAKING IT TO THE EDGE

10:15 p.m.

Come to the Edge and get all the info you need to squeeze every bit of fun out of your stay onboard.



Entrance on Deck 4, Forward (7-9418)  
12:00 p.m. - 3:00 p.m., 4:30 p.m. - 1:00 a.m.

(14-17 YEAR OLDS)

## THE DOWNLOAD

10:30 p.m.

Come up to Vibe and help plan all the fun activities you will be doing this cruise with your new friends!

# BUENA VISTA THEATRE

## Feature Movies this Voyage

### SATURDAY - PORT CANAVERAL

5:30 p.m. PG The Muppets  
8:00 p.m. PG The Muppets  
10:30 p.m. PG-13 The Avengers

XX DOLBY 3D

### SUNDAY - DAY AT SEA

8:30 a.m. PG Wreck-It Ralph  
11:00 a.m. PG Frankenweenie  
2:45 p.m. PG Oz The Great and Powerful  
5:15 p.m. PG-13 The Avengers  
8:00 p.m. PG-13 The Avengers  
10:45 p.m. PG Wreck-It Ralph

OC

XX DOLBY 3D

XX DOLBY 3D

XX DOLBY 3D

XX DOLBY 3D

### MONDAY - DAY AT SEA

8:30 a.m. G Finding Nemo  
10:30 a.m. PG Wreck-It Ralph  
5:00 p.m. PG-13 Lincoln  
8:00 p.m. PG-13 Lincoln  
10:45 p.m. PG Oz The Great and Powerful

XX DOLBY 3D

XX DOLBY 3D

XX DOLBY 3D

### TUESDAY - ST. MAARTEN

2:30 p.m. PG-13 The Avengers  
5:15 p.m. PG Oz The Great and Powerful  
8:15 p.m. PG Oz The Great and Powerful  
11:00 p.m. PG-13 Iron Man 3

### WEDNESDAY - ST. THOMAS

12:30 p.m. PG Oz The Great and Powerful  
3:00 p.m. PG-13 Iron Man 3  
5:45 p.m. PG Wreck-It Ralph  
8:15 p.m. PG Wreck-It Ralph  
10:30 p.m. PG-13 Lincoln

OC

XX DOLBY 3D

XX DOLBY 3D

XX DOLBY 3D

### THURSDAY - DAY AT SEA

8:00 a.m. PG Wreck-It Ralph  
10:00 a.m. PG-13 Iron Man 3  
5:30 p.m. PG Brave  
7:45 p.m. PG Brave  
10:00 p.m. PG Frankenweenie

XX DOLBY 3D

XX DOLBY 3D

XX DOLBY 3D

XX DOLBY 3D

### FRIDAY - DISNEY'S CASTAWAY CAY

10:00 a.m. PG-13 Iron Man 3  
5:45 p.m. G Finding Nemo  
8:15 p.m. G Finding Nemo  
11:00 p.m. PG Oz The Great and Powerful

XX DOLBY 3D

XX DOLBY 3D

XX DOLBY 3D

OC - Open Captioning

Subject to change.



# MORE TO ENJOY WHILE ONBOARD



## ADVENTURES BY DISNEY

Join us for a special presentation on Thursday to learn what traveling with Adventures by Disney is all about. See our Adventure Guide on Deck 4, Midship.

## PLAN YOUR NEXT CRUISE

Another Disney Cruise Line vacation is in your future! Book a future cruise today and you'll save 10%, receive up to a \$200 onboard credit, and pay a reduced deposit! Visit the Future Cruise Sales Desk, Deck 4, Midship. Book by 8:30 p.m. Monday for a chance to win \$100 Onboard Credit for this cruise!

## PORT & SHOPPING INFORMATION

St. Maarten & St. Thomas are the most famous tax & duty free shopping ports in the world! Don't miss tomorrow's Port & Shopping Show in the Buena Vista Theatre at 1:30 p.m. Over \$1000 in Give-A-Ways! Meet your Shopping Guides, Candice & Mark at their Desk, Deck 4, Midship 7:30 p.m. - 8:30 p.m. tonight, and get your extra raffle tickets for the Shopping Show.



## ONBOARD AIRLINE CHECK IN

If you would like to have your boarding passes printed for you onboard and have your luggage taken to the airport for you, register before midnight on Wednesday. If you have Disney Cruise Line airport transfer to Orlando International Airport and fly with one of the participating airlines, stop at Guest Services, Deck 3, Midship to register.

## SURF @ SEA

\$0.75 per minute, or save money by buying blocks of time. \$55.00 for 100 minutes, \$100.00 for 250 minutes and \$150.00 for 500 minutes. Wireless information sheets are available at Guest Services, Deck 3, Midship.

*Please note: Due to satellite connectivity, onboard internet service will be noticeably slower than you may be accustomed to and may at times be interrupted or unavailable.*

## ON DEMAND TV

Watch Disney movies, Hollywood features, ABC Shows, and even captioned content, plus much more "On Demand" for FREE in the comfort of your stateroom! Bookmark your movie and come back to watch it later. Press MENU on your stateroom television remote control, and follow the prompts.



## SPA SPECIAL



Book and receive your treatment today and you will receive a complimentary extra 15 minute treatment of your choice.

Call Senses Spa & Salon  
7-1465



Port Adventures are designed to ensure that you see the best that our ports have to offer. Explore the two nations of St. Maarten on a land tour or take an exhilarating RIB boat ride from the Dutch to the French side. From St. Thomas you can enjoy the scenic splendor of St. John or snorkel in the beautiful waters of the U.S.V.I. Our experienced Port Adventures team will help you find the best choices for your family at the Port Adventures Desk, Deck 5, Midship.

## SHOPPING

### FRAGRANCE OF THE DAY

Stop by Whitecaps to test our selected fragrance today! Deck 3, Forward.

### GREAT OFFERS ONBOARD

Get a Disney Cruise Line duffel for \$17.95 when you spend \$30 or more and a Disney Cruise Line towel for \$14.95 when you spend \$25 or more. Promotion available in Mickey's Mainsail, Sea Treasures, and Whitecaps. Shops are located Deck 3, Forward.

### BIBBIDI BOBBIDI BOUTIQUE

A makeover fit for a princess! Fairy Godmothers-in-Training are ready with magic and pixie dust to give your princess the transformation of a lifetime. Make your reservations at the Bibbidi Bobbidi Boutique, Deck 5, Midship. Limited space available.

### BRAND NAME WATCHES

Wide range of name brand watch collections. Men's and women's styles are available on watch brands such as Fossil, Kenneth Cole, Guess, and DKNY. Available in Whitecaps, Deck 3, Forward.

### SOPHIA FIORI DIAMOND TRUNK SHOW

Sophia Fiori, Hollywood's first choice in diamonds, has boarded the Disney Fantasy to premier their new collection of white & colored diamonds worn at the Oscars, Golden Globes, Emmy and Grammy Awards. Stop by Whitecaps, Deck 3, Forward and view this stunning collection.

### BLUE GALLERY CONTEMPORARY ART

Blue Gallery's beautiful contemporary art collection features some of the most recognizable artists of today. Stop by Vista Gallery to view these great works at great prices! Vista Gallery, Deck 4, Midship

**Due to port regulations, when the ship is docked, the stores will remain closed.**

## BIBBIDI BOBBIDI BOUTIQUE

Becoming the princess of your dreams creates memories for a lifetime. Where Fairy Godmothers in training are ready with Pixie Dust and Magic! Make your reservations for princess makeovers and the Pirate League today. Limited space available.

Bibbidi Bobbidi Boutique is located on Deck 5, Midship, or call ext. 9438 to make a reservation.



## GET THE PICTURE!

### WELCOME ABOARD RAFFLE

Your Embarkation photos will be available for viewing at 7:00pm. Visit Shutters and fill in a raffle to enter for a chance to win two 8x10 photos!

\*Please note that photos are available for viewing on our interactive photo kiosks approximately five hours after being taken and are only available for purchase during this cruise.

## IMPORTANT INFORMATION

### Security Notice

All Guests (including children) who wish to disembark the ship are required to present their Key to the World card at the gangway. A photo ID is also required for those Guests who are 18 years of age or older. Guests under the age of 18 are required to have a Parent, Guardian or other responsible adult sign an authorization form at the time it is given out if they wish to go ashore unaccompanied. Authorization forms are available at the gangways and Guest Services.

### Please Note:

Please remember to use plenty of sunscreen and mosquito repellent when venturing ashore.

### Cold and Flu Reminder

Please wash hands frequently and thoroughly, particularly before meals. Contact the Health Center by dialing 7-1923, should anyone in your party become ill.

### Corridor Quiet Hours

As a courtesy to all our Guests, please recognize quiet hallway hours from 10:00 p.m. til 8:00 a.m.

### Inclement Weather

For the safety of all Guests, outdoor events may be changed due to unforeseen weather conditions.

### Environmental Message

With Disney's commitment to the Environment, please refrain from throwing anything over the Ship's side. Thank you!

### No Reserved Seats Policy

As a courtesy to all our Guests, we kindly advise that the saving of seats is not permitted in the Walt Disney Theatre, and the saving of the sun loungers is not permitted on Deck 11, 12, and 13. Items left unattended will be returned to lost and found at Guest Services, Deck 3 Midship.

### Smoking

For the comfort of our guests the following areas are designated as Smoking areas: - Promenade Deck (Deck 4), smoking is permitted Port Side. Aft only from 6:00 p.m. to 6:00 a.m.  
- Currents - Deck 13, Forward, Port Side.  
- Meridian Bar - Deck 12, Aft, Port Side, outside.  
- Smoking is permitted on stateroom verandahs.  
Smoking is prohibited inside all guest staterooms. Guests found smoking in their staterooms will be charged a \$250 stateroom recovery fee. Electronic cigarettes may only be used in designated smoking areas.

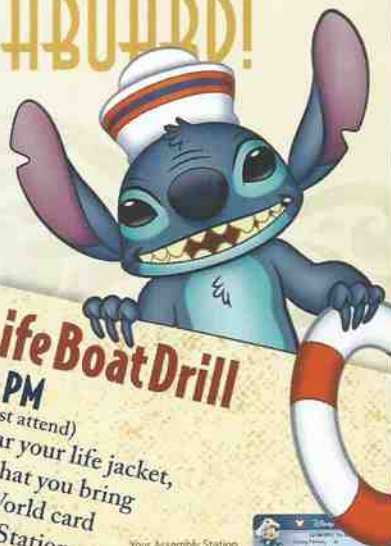
### Walt Disney Theatre

Theatrical performances may use artificial fog, strobe lights, pyrotechnics and other special effects. For the safety of our performers and the comfort of those around you, the use of any photography, video recording device or any electronic equipment is prohibited.



### Verandah Safety

Please do not leave any combustible materials on your balcony when not present in your stateroom for safety reasons.





Deck Stage,  
Deck 11, Midship,  
4:30 p.m.

Afternoon	1:45	2:00	2:15	2:30	2:45	3:00	3:15	3:30	3:45	4:00	4:15	4:30	4:45	5:00	5:15	5:30	5:45	6:00	6:15	6:30	6:45	
FUNNEL VISION												Tarzan (PG) Funnel Vision > 7:11 p.m.										
BUENA VISTA THEATRE												The Muppets (PG) Duration: 1 Hour 43 Minutes > 7:13 p.m.										
CHARACTER												Mickey Snow White Donald Lobby Atrium Deck 4, Balcony Lobby Atrium (V)										
FUN FOR ALL AGES	Pool Side Jams with Cruise Staff DJ Deck Stage, Deck 11, Midship											<div><div>Deck Stage</div><div>Walt Disney Theatre</div></div>										
	Walking Ship Tour Meet at ProLudes (Earlier Tour starts at 1:00 pm)																					
	Disney Vacation Club Members Celebration The Tube																					
ADULTS	U.S. Open Golf Championship < Starts 1:30 p.m. O'Gills Pub (Subject to Satellite Availability)											Spa Raffle Senses Spa & Salon										
VIBE 14-17 YEARS OLD	🎭 Open House											🎭 Open House										
EDGE 11-14 YEARS OLD	🎭 Open House											🎭 Open House										
OCEANEER LAB 3-12 YEARS OLD	Open House and Registration 🎭 Magic Playfloor Registration											🎭 Open House and Registration Open for Secured Activities Ice Breakers										
OCEANEER CLUB 3-12 YEARS OLD	Open House and Registration 🎭 Magic Playfloor Registration											🎭 Open House and Registration										

All ship services will be suspended during this time for the mandatory Life Boat Drill scheduled for 4:00 p.m.

Please refer to the posted drill instructions prior to heading to your Assembly Station.



Evening	7:00	7:15	7:30	7:45	8:00	8:15	8:30	8:45	9:00	9:15	9:30	9:45	10:00	10:15	10:30	10:45	11:00	11:15	11:30	11:45	12:00	
FUNNEL VISION					Brother Bear (G) Funnel Vision						The Parent Trap (PG) Funnel Vision											
BUENA VISTA THEATRE					The Muppets (PG) Duration: 1 Hours 43 Minutes						The Avengers  (PG-13) Duration: 2 Hours 22 Minutes						> 12:38 a.m.					
CHARACTER	Pluto <small>Lobby Atrium (V)</small>		Belle <small>Dk 4, Balcony</small>								Tiana <small>Lobby Atrium (F)</small>		Peter Pan <small>Dk 4, Balcony</small>									
FUN FOR ALL AGES															Family Superstar Karaoke <small>D Lounge</small>							
															Family Dance Party <small>D Lounge</small>							
	Family Dance Party With Guest DJ Livitup <small>The Tube</small>												Live Music with Ash & Katie <small>Lobby Atrium</small>		Live Music with Ash & Katie <small>Lobby Atrium</small>							
ADULTS	Live Piano with Gayla Smith <small>La Piazza</small>				Live Piano with Gayla Smith <small>La Piazza</small>						Club 18*21 - Ice Breaker <small>O'Gills Pub</small>				Bring The Tube Alive with Guest DJ Livitup <small>The Tube</small>							
	Stanley Cup Finals: Boston vs. Chicago <small>O'Gills Pub (Subject to Satellite Availability)</small>																					
VIBE <small>14-17 YEARS OLD</small>	Open House				Open for Teens				Dodgeball				Chillin' in Vibe				The Download		Zombified			
EDGE <small>11-14 YEARS OLD</small>	Profiles				Spoons				Catch & Push				Ice Breakers				Taking it to The Edge		Gender Wars			
OCEANEER LAB <small>3-12 YEARS OLD</small>	Ice Breakers		Choose Your Cruise								Magic Show		GAGA Ball				Magic Playfloor					
OCEANEER CLUB <small>3-12 YEARS OLD</small>			Magic Playfloor		Dance Party		Choose Your Cruise				Once Upon a Time		Create Your Own Name Tag		Movie Time							

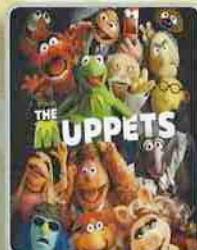

 Министерство образования и науки Российской Федерации



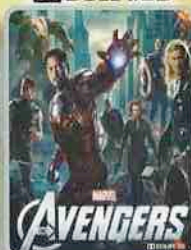
SATURDAY, JUNE 15, 2013 - PORT CANAVERAL

# BUENA VISTA THEATRE

DOLBY 3D



5:30 p.m. & 8:00 p.m.  
Duration: 1 hr 43 min  
Rating: PG



10:30 p.m.  
Duration: 2 hr 22 min  
Rating: PG-13

## Character Appearances

### MICKEY MOUSE

Lobby Atrium (V)  
5:15 p.m. & 10:00 p.m.  
Preludes - 7:15 p.m.

### PETER PAN

Deck 4 Balcony, Midship  
10:00 p.m.

### SNOW WHITE

Deck 4 Balcony, Midship  
5:30 p.m.  
Preludes - 7:45 p.m.

### DONALD DUCK

Lobby Atrium (V) - 5:45 p.m.

### PLUTO

Lobby Atrium (V) - 7:15 p.m.

### PRINCESS AURORA

Deck 4 Balcony, Midship  
7:15 p.m.

### BELLE

Deck 4 Balcony, Midship  
7:45 p.m. & 9:30 p.m.

### GOOFY

Lobby Atrium (V)  
7:45 p.m. & 9:30 p.m.

### PRINCESS TIANA

Lobby Atrium (P) - 9:30 p.m.



(H) Hallway - (S) Starboard Side - (P) Port Side - (V) Vestibule

For details of daily Disney character appearances, refer to the character line on your Navigator Grid, or the digital character board in the Lobby Atrium.

## YOUTH ACTIVITIES THEMED EXPERIENCES

**CLUBHOUSE SERIES**  
focuses on movement and features content which appeals to younger children.

**STORYBOOK SERIES**  
is designed with a strong connection to the Disney classic stories.

**JUMP UP! SERIES**  
includes large ground games & movement-oriented activities.

**CREATE & INVENT SERIES**  
will have a tactile focus allowing children to create and admire their work.

**IN THE SPOTLIGHT SERIES**  
focuses on children's stage presence with lots of activities and enthusiasm.

**SOLVE IT! SERIES**  
are less active, but will challenge children with problem/solutions-based activities.

### YOUTH ACTIVITIES OPEN HOUSE

A non-secured program with activities for families, adults and children of all ages to enjoy together.

## SHIP DIRECTORY

### YOUTH ACTIVITIES

DISNEY'S OCEANEER CLUB	DECK 5, MID	12:00 PM - 3:00 PM 4:30 PM - 12:00 MID
DISNEY'S OCEANEER LAB	DECK 5, MID	12:00 PM - 3:00 PM 4:30 PM - 12:00 MID
EDGE	DECK 13, MID	12:00 PM - 3:00 PM 4:30 PM - 12:00 MID
VIBE	DECK 4, FWD	12:00 PM - 3:00 PM 4:30 PM - 1:00 AM
IT'S A SMALL WORLD NURSERY	DECK 5, MID	12:00 PM - 3:00 PM 4:30 PM - 11:00 PM

### RECREATION

AQUADUCK	DECK 12, MID	12:00 PM - 3:00 PM 4:30 PM - 10:00 PM
AQUALAB	DECK 12, AFT	12:00 PM - 3:45 PM 5:00 PM - 7:00 PM
DONALD'S POOL	DECK 11, MID	12:00 PM - 3:30 PM 5:30 PM - 12:00 MID
GOLF/SPORTS SIMULATORS	DECK 13, AFT	12:00 PM - 3:30 PM 4:30 PM - 6:00 PM
GOOFY GOLF	DECK 13, AFT	5:00 PM - 10:00 PM
GOOFY'S SPORTS DECK	DECK 13, AFT	12:00 PM - 6:00 PM
MICKEY'S POOL	DECK 11, MID	12:00 PM - 11:00 PM
MICKEY'S SLIDE	DECK 11, MID	12:00 PM - 3:30 PM 4:30 PM - 6:00 PM
MIDSHIP DETECTIVE AGENCY	DECK 2 & 5, MID	11:30 AM - 10:00 PM
NEMO'S REEF	DECK 11, MID	12:00 PM - 3:30 PM 4:30 PM - 6:00 PM
PORT ADVENTURES DESK	DECK 5, MID	12:00 PM - 3:30 PM 4:30 PM - 8:30 PM
QUIET COVE POOL	DECK 11, FWD	12:00 PM - 12:00 MID
SATELLITE FALLS	DECK 13, FWD	12:00 PM - 6:00 PM
SENSES FITNESS CENTER	DECK 11, FWD	11:30 AM - 10:00 PM

### GENERAL INFORMATION

ARR-CADE	DECK 11, AFT	24 HOURS
ADVENTURES BY DISNEY	DECK 4, MID	
DISNEY VACATION CLUB	DECK 4, MID	5:00 PM - 8:00 PM
FUTURE CRUISE SALES DESK	DECK 4, MID	7:30 PM - 8:30 PM
GUEST SERVICES	DECK 3, MID	24 HOURS
MEDICAL HEALTH CENTER	DECK 1, FWD	4:30 PM - 7:00 PM
PORT & SHOPPING DESK	DECK 4, MID	7:30 PM - 8:30 PM
PRELUDES	DECK 3, FWD	5:45 PM - 6:30 PM 8:00 PM - 8:45 PM
SENSES SPA AND SALON	DECK 11, FWD	11:30 AM - 10:00 PM
SHUTTERS PHOTO GALLERY	DECK 4, MID	7:00 PM - 11:00 PM
SHUTTERS DIGITAL	DECK 4, MID	OPENS AT 5:00 PM

### SHOPPING

BIBBIDI BOBBIDI BOUTIQUE	DECK 5, MID	12:00 PM - 3:00 PM 5:00 PM - 9:00 PM
MICKEY'S MAINSAIL	DECK 3, FWD	5:45 PM - 11:00 PM
SEA TREASURES	DECK 3, FWD	5:45 PM - 11:00 PM
VISTA GALLERY	DECK 4, MID	6:00 PM - 10:00 PM
WHITECAPS	DECK 3, FWD	5:45 PM - 11:00 PM

<b>DINNER MENU</b>	Animator's Palate: Pacific Rim Cuisine	<b>DRINK OF THE DAY</b>	Ooh La La (Alcoholic)	<b>WEATHER FORECAST</b>	Saturday: Sunny
	Enchanted Garden: Continental Market		Espresso Chiller (Non Alcoholic)		High: 78°F/26°C
	Royal Court: French Dinner				Sunday: Partly Cloudy
	Dining Times: 5:45 p.m. & 9:15 p.m.				High: 80°F/27°C

**Evening Attire: Cruise Casual**

## DINING & LOUNGES

### LUNCH

CABANAS	DECK 11, AFT	12:00 PM - 3:00 PM
ENCHANTED GARDEN	DECK 2, MID	12:00 PM - 2:00 PM
FILLMORE'S FAVORITES	DECK 11, MID	12:00 PM - 3:30 PM 4:15 PM - 7:00 PM
LUIGI'S PIZZA	DECK 11, MID	12:00 PM - 3:30 PM 4:15 PM - 6:00 PM
TOW MATER'S GRILL	DECK 11, MID	12:00 PM - 3:30 PM 4:15 PM - 10:00 PM

### DINNER

ANIMATOR'S PALATE	DECK 3, AFT	5:45 PM & 8:15 PM
ENCHANTED GARDEN	DECK 2, MID	5:45 PM & 8:15 PM
ROYAL COURT	DECK 3, MID	5:45 PM & 8:15 PM
PALO (18+)	DECK 12, AFT	6:00 PM - 8:30 PM
REMY (18+)	DECK 12, AFT	6:00 PM - 8:30 PM

### LATE NIGHT SNACKS

LA PIAZZA (18+)	DECK 4, AFT	10:45 PM - 11:45 PM
LUIGI'S PIZZA	DECK 11, MID	9:30 PM - 12:00 MID

### ADDED FEATURES

BEVERAGE STATION	DECK 11, MID	24 HOURS
EYE SCREAM	DECK 11, MID	12:00 PM - 11:00 PM
ROOM SERVICE	DIAL 0	24 HOURS

### ENTERTAINMENT - LOUNGES - BARS

Adults must be 21 and older to consume alcoholic beverages.

BON VOYAGE	DECK 3, MID	12:00 PM - 10:30 PM
COVE BAR (18+)	DECK 11, FWD	12:00 PM - 11:00 PM
COVE CAFE (18+)	DECK 11, FWD	12:00 PM - 12:00 MID
CURRENTS (18+)	DECK 13, FWD	12:00 PM - 10:30 PM
D LOUNGE	DECK 4, MID	SHOWTIMES
FROZONE TREATS	DECK 11, MID	12:00 PM - 11:00 PM
LA PIAZZA	DECK 4, AFT	12:00 PM - 12:00 MID
MERIDIAN (18+)	DECK 12, AFT	5:00 PM - 12:00 MID
O'GILLS PUB (18+ AFTER 9:00 PM)	DECK 4, AFT	12:00 PM - 12:00 MID
OOH LA LA (18+)	DECK 4, AFT	5:00 PM - 12:00 MID
OUTLOOK	DECK 14, MID	SUNSET TIMES
SKYLINE (18+)	DECK 4, AFT	5:00 PM - 12:00 MID
THE TUBE (18+)	DECK 4, AFT	10:00 PM - 2:00 AM
VISTA CAFE	DECK 4, MID	12:00 PM - 11:00 PM
WAVES	DECK 12, AFT	12:00 PM - 7:00 PM

Consumers who order raw or partially cooked, ready-to-eat food of animal origin, are hereby informed that the food is not sufficiently cooked to ensure its safety.

## GOOFY'S SPORTS

### Digital Simulators

**Sports Simulator**  
(Basketball, Baseball, Hockey, football or Soccer) \$12 / half hr, \$20 / hr

**Golf Simulator**  
\$25 / half hr, \$45 / hr

Reservations can be made at the Port Adventures Desk, Deck 5, Midship or at the Simulators, Deck 13, Aft.

Disney Cruise Line

## PORT ADVENTURES

Visit the Port Adventures Desk, Deck 5, Midship, for bookings & questions.

### IMPORTANT NUMBERS

Fire/Security:	7-3001
Medical Emergency:	7-3000
Health Center:	7-1923