

PERSONAL NAVIGATOR

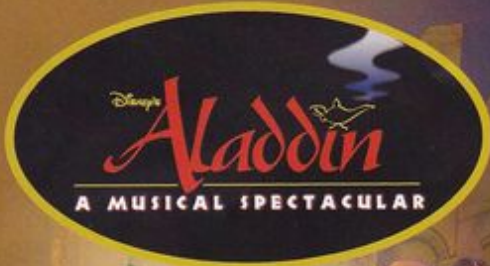


Sunrise: 7:28 a.m. Sunset: 7:03 p.m.
Evening Attire: Formal

Sunday: Sunny High: 78°F/26°C
Monday: Sunny High: 71°F/22°C

SUNDAY, OCTOBER 28, 2012

DAY AT SEA

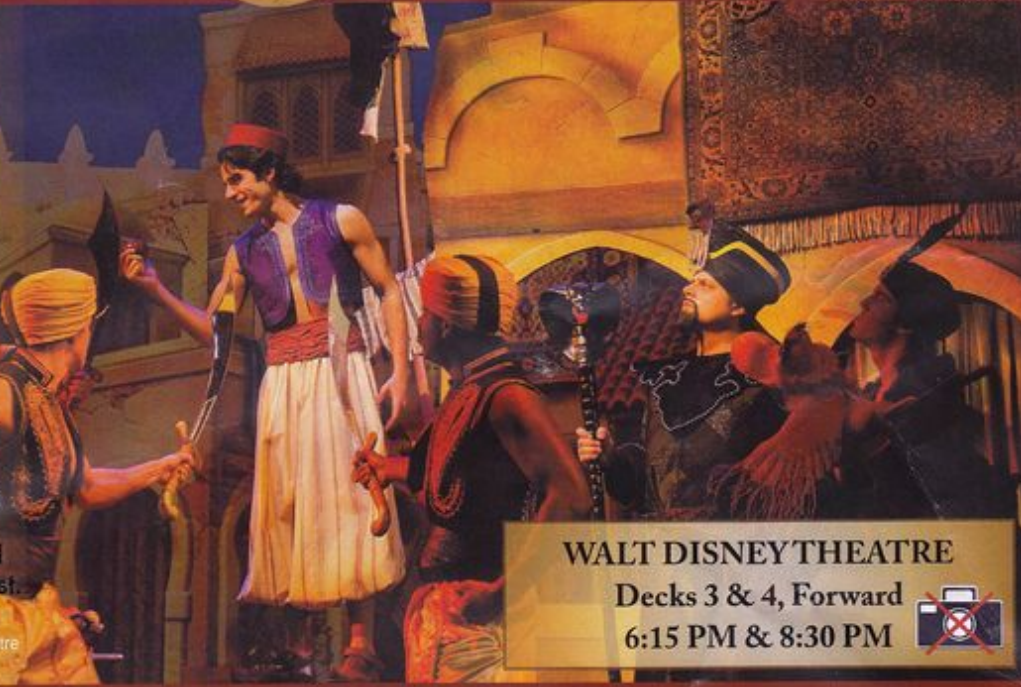


New to Disney Cruise Line.
Disney's Aladdin – A Musical Spectacular™

A fast-paced, musical comedy based on the beloved animated film.

Aladdin, the "street rat" of Agrabah, meets a wise-cracking Genie, battles the evil Jafar, and falls in love with the beautiful and spirited Princess Jasmine. Disney storytelling at its best.

Assistance available at the entrance to the Walt Disney Theatre 30 minutes prior to show time.



WALT DISNEY THEATRE
Decks 3 & 4, Forward
6:15 PM & 8:30 PM

Disney FANTASY Fun Facts

Tonnage: 130,000 Gross Tons
Height: 216 Feet
Length: 1115 Feet

Important Dates

Name Announcement: March 10, 2009
Steel Cutting: March 16, 2010
Keel Laying: February 11, 2011
Delivery: February 9, 2012

Almost 4 football fields in length, the Disney Fantasy is longer than the height of the Eiffel Tower in Paris (1,063 feet). She is also longer than the height of New York City's famous Chrysler building (1,047 feet).

The Disney Fantasy's whistle, a prominent element of the "Sailing Away" deck party at the start of the cruise, is quite the musical talent. It's able to perform not just the first musical line of "When You Wish Upon a Star" but also the second line of the song ("makes no difference who you are") plus several measures of "Yo Ho (A Pirate's Life for Me)," "It's a Small World," "Be Our Guest," "Hi Diddle Dee Dee (An Actor's Life for Me)" and "A Dream is a Wish."
(These will be played after today's noon announcement)



CAPTAIN'S RECEPTION

Meet some of the ship's officers and enjoy a cocktail. With live music provided by Fine Whines.
Lobby Atrium, Deck 3, Midship,
5:00 & 7:30 p.m.
Enjoy an exclusive photo opportunity with Captain Tom at
5:15 & 7:30 p.m., Lobby Atrium

Don't Miss:

Disney Animation: Creating a Character
D Lounge, Deck 4, Midship - 9:45 a.m.
Go behind the scenes at Walt Disney Animation Studios as Walt Disney himself talks about his most famous characters, then learn the basic techniques of drawing Mickey and Donald in this fun and interesting enrichment program.

Jack-Jack's Incredible Diaper Dash
Lobby Atrium, Deck 3, Midship - 11:00 a.m.
Calling all baby cruisers! The Disney Fantasy's babies take to the mat to see who's the fastest crawler of the seven seas! Register your baby from 10:45 a.m. - 11:00 a.m.

Movie Challenge Poolside
Deck Stage, Deck 11, Midship - 12:30 p.m.
So you like movies? And you like bingo? This deck party has them both! Come on out to watch all your favorite movie clips and just maybe your team will win the opportunity to choose the movie played by the pool today!



TIME ZONE CHANGE

Remember to turn your clocks **BACK 1 HOUR** upon retiring on **SUNDAY** evening, or first thing **MONDAY** morning.

DINNER MENU

Animator's Palate: Pacific Rim Cuisine
Enchanted Garden: Continental Market Cuisine
Royal Court: French Cuisine

DRINK OF THE DAY

Ooh La La (Alcoholic)
Coco Bali (Non Alcoholic)

IMPORTANT NUMBERS

Fire/Security: 7-3001
Medical Emergency: 7-3000
Health Center: 7-1923

FUN FOR ALL AGES HIGHLIGHTS



WAKE UP WITH DISNEY JUNIOR

D Lounge, Deck 4, Midship - 8:30 a.m.

What happens when you experience unlimited fun with your favorite Disney Junior shows? An exciting dance party designed especially for pre-schoolers ages seven and under.



JACK-JACK'S INCREDIBLE DIAPER DASH

Lobby Atrium, Deck 3, Midship - 11:00 a.m.

Calling all baby cruisers! The Disney Fantasy's babies take to the mat to see who's the fastest crawler of the seven seas! Register your baby from 10:45 a.m. - 11:00 a.m.

DISNEY VACATION CLUB GROUP PREVIEW

The Tube, Deck 4, Aft - 12:30 p.m.

Want to learn more about taking magical vacations year after year? Stop by our interactive group presentation to find out more information from a Disney Vacation Club representative.

PORT & SHOPPING SHOW

Buena Vista Theatre, Decks 4 & 5, Forward - 1:30 p.m.

Join your Port & Shopping Guide Kiwi James in a once only presentation to learn about our incredible ports of call, Grand Cayman & Cozumel. All in attendance will receive a Free Caribbean charm bracelet and the chance to win a diamond heart pendant!



ANYONE CAN COOK - APPLE STRUDEL

D Lounge, Deck 4, Midship - 2:15 p.m.

From our galley to yours. Join our chefs as they show you how to prepare delicious dishes. Today's Menu - Apple Strudel

DISNEY TUNE TRIVIA

La Piazza, Deck 4, Aft - 3:00 p.m.

Join your Cruise Staff and pianist Andy Johnson, as they put your Disney Tune knowledge to the test.

FAMILY DANCE PARTY WITH THE JUNE GYPSIES

D Lounge, Deck 4, Midship - 7:30 p.m. & 9:45 p.m.

Join your Cruise Staff and The June Gypsies for a formal night bash!

ADULT ACTIVITY HIGHLIGHTS

SENSES SPA FITNESS CLASSES & SEMINARS

Sunrise Stretch - Senses Fitness Center - 7:00 a.m.

Walking In Comfort Posture Analysis - Senses Fitness Center - 7:30 a.m.

Body Sculpt Boot Camp (Nom. Fee) - Senses Fitness Center - 9:00 a.m.

Salon Makeover Seminar - Senses Fitness Center - 10:30 a.m.

Introduction to Acupuncture - Outlook - 11:15 a.m.

Detox For Health and Weight Loss - Outlook - 12:00 p.m.

How to Increase your Metabolism - Outlook - 1:00 p.m.

Acupuncture Live Demonstration - Senses Fitness Center - 2:15 p.m.

Posture Analysis - Senses Fitness Center - 3:00 p.m.

Group Cycling - Senses Fitness Center - 4:00 p.m.

Fab Abs - Senses Fitness Center - 5:00 p.m.

Fitness Frenzy (13-17, Nom. Fee) - Senses Fitness Center - 7:00 p.m.



TASTING CLASSES

Champagne Tasting (21+, Nom. Fee) - Ooh La La - 12:15 p.m.

Martini Tasting (21+, Nom. Fee) - Meridian - 1:00 p.m.

New World Wine Tasting (21+, Nom. Fee) - Ooh La La - 2:00 p.m.

Mixology (21+, Nom. Fee) - Skyline - 3:30 p.m.

Tequila & Margarita Tasting (21+, Nom. Fee) - The Tube - 5:00 p.m.

Whiskey Tasting (21+, Nom. Fee) - Meridian - 10:30 p.m.

Please make reservations for tastings at Guest Services for a nominal fee.

Tasting Seminars are only for Guests 21 and Older.



CLUB 18*21 - LUNCH

Enchanted Garden, Deck 2, Midship - 12:15 p.m.

CLUB 18*21 - MIXER

O'Gills Pub, Deck 4, Aft - 10:00 p.m.



ESPN DREAM TEAM DRAFT DAY

O'Gills Pub, Deck 4, Aft - 10:15 a.m.

Play ball! Join the "Commissioner" and engage in this interactive fantasy baseball draft unlike anything you've ever seen! Can YOU draft the greatest baseball team of All-Time?



LONDON ROCKS

The Tube, Deck 4, Aft - 11:15 p.m.

Hop onboard and hit the dance floor as we take you on a ride through the charts, partying it up to some of the hottest British hits! With a special performance by the Underground Dancers.



KICK START BINGO

D Lounge, Deck 4, Midship

Card Sales - 10:45 a.m.

Game Starts - 11:00 a.m.

Join us for our first session of Jackpot Bingo, with four CASH prizes to be won. Everyone in attendance will receive a FREE bingo card for one of the four cash prize games. Plus your chance to



DOUBLE UP JACKPOT

D Lounge, Deck 4, Midship

Card Sales - 3:30 p.m.

Game Starts - 3:45 p.m.

Special double up session: All electronic cards purchased will be doubled.

The snowball jackpot continues to grow and could be won today!

YOUTH ACTIVITIES HIGHLIGHTS

DINE & PLAY

A convenience for families dining at 8:15 p.m., our Youth Activities Counselors will be available at 9:15 p.m. at the entrance of Royal Court, Enchanted Garden and Animator's Palate dining rooms to bring registered children to join the fun in the Youth Activity areas.



Deck 5 Midship (7-1440)
(3-12 years old) 9:00 a.m. - 11:30 p.m.

STORY TIME IN ANDY'S ROOM

7:15 p.m.

Come listen to your favorite Disney stories as told by your Youth Counselors.

ONCE UPON A TIME

7:30 p.m.

Join Bartleby the Bookmaker for a magical, musical story time featuring a Disney Princess!



Deck 5 Midship (7-1445)
(3-12 years old) 9:00 a.m. - 1:00 a.m.

STITCH'S ADVENTURE SQUAD

9:30 a.m.

Stitch, everyone's favorite alien, is making an appearance to share some of his mischievous games and activities.

GET THE HOOK

3:15 p.m.

A villainous villain has stolen Captain Hook's prized golden hook. Become a member of the Top Deck Detective Agency and help solve the clue's to retrieve Hook's hook.



Deck 13 Midship (7-9743)
(11-14 years old) 10:00 a.m. - 1:00 a.m.

ANIMATION CELLS

12:00 p.m.

Learn what it takes to be a Disney Animator, then put your new skills to the test as you create your very own animation cell.

THAT'S HILARIOUS

9:15 p.m.

Ever wanted to show off your comedy skills? Then be a part of the cast for the crazy improv show "That's Hilarious" and put on a live show for your family and friends.



Entrance on Deck 4 Forward (7-9418)
(14-17 years old) 10:00 a.m. - 2:00 a.m.

ZOMBIFIED

1:30 p.m.

A big movie producer is looking for a few good zombies to help him film the finale to his latest masterpiece, Zombified.

DIVE INTO DJ'ING

3:30 p.m.

Hop on the turn tables and learn to scratch with Guest DJ Nature.

BUENA VISTA THEATRE

Today's Movies



8:30 a.m.
Run Time:
1 hr 40 min
Rating: G



11:00 a.m.
Run Time:
1 hr 40 min
Rating: PG



3:00 p.m.
Run Time:
1 hr 41 min
Rating: PG



5:15 p.m. & 8:15 p.m.
Run Time:
2 hr 22 min
Rating: PG-13



11:00 p.m.
Run Time:
1 hr 55 min
Rating: PG-13



FAMILY CABARET

Featuring the Rhythm & Beat-Box Comedy of Bronkar Lee, as he entertains the entire family in this fun-filled show.

*The Tube,
Deck 4, Aft,
7:30 p.m.*



ADULT CABARET

Featuring the Comedy & Hypnosis of Dale K, as he entertains you in this adult exclusive show.

*The Tube,
Deck 4, Aft,
10:30 p.m.*

YOUTH ACTIVITIES OPEN HOUSE

Open House is an opportunity for all to come and participate in a variety of exciting activities and free time in It's a Small World Nursery, Oceaneer Club, Lab, Edge and Vibe throughout the cruise. During these times secured programming will still be offered in the other venue for those looking to check their children into care.

Edge: 9:00 a.m. - 10:00 a.m.
Vibe: 9:00 a.m. - 10:00 a.m.

Oceaneer Club: 9:00 a.m. - 10:00 a.m.
Oceaneer Lab: 6:00 p.m. - 8:00 p.m.

MORE TO ENJOY WHILE ONBOARD



ADVENTURES BY DISNEY

Join us for a special presentation on Thursday to learn what traveling with Adventures by Disney is all about. See our Adventure Guide on Deck 4, Midship, for more information!



PLAN YOUR NEXT CRUISE

Plan your next Disney Cruise Line vacation today! Book your next cruise today for the best availability and pricing. You'll save 10%, receive up to a \$200 onboard credit, and pay a reduced deposit! Visit the Future Cruise Sales Desk, Deck 4, Midship, or call 7-2848 before the end of this cruise to find out more.



PORT & SHOPPING INFORMATION

Join your Port & Shopping Guide Kiwi James to learn about the incredible tax and duty free shopping in Grand Cayman and Cozumel. Everything will be covered from Rolex to rum cakes, diamonds to color changing T-shirts. All in attendance will receive a free Caribbean charm bracelet, free ship charm and be entered to win a diamond pendant. Buena Vista Theatre, Deck 4, Forward at 1:30 p.m.



SENSES
Spa & Salon

ACUPUNCTURE

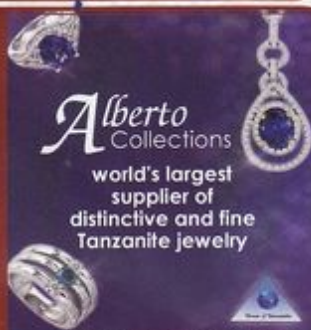
Acupuncture allows your body to heal itself. It is painless, deeply relaxing and rejuvenating for mind and body, and is effective for various conditions. See your onboard Acupuncture Therapist for your complimentary consultation. ♪

Senses Spa & Salon, 7-1465

ALBERTO TRUNK SHOW

House of Tanzanite special trunk show of fine Tanzanite, colored Diamonds, Alexandrite, and Emerald jewelry from classic chic to over the top elegant designs hand made in the US.

This week onboard at White Caps



Alberto Collections
world's largest supplier of distinctive and fine Tanzanite jewelry

This week onboard at White Caps



FORMAL PORTRAITS TONIGHT!

Moon, Mural & Bow - Six guests maximum please
Grand Staircase & Minnie Statue - Groups accommodated

5:00 p.m. - 6:00 p.m.

7:15 p.m. - 8:30 p.m.

9:30 p.m. - 10:30 p.m.

**Please note that photos are available for viewing on our interactive photo kiosks approximately five hours after being taken and are only available for purchase during this cruise.*

ONBOARD AIRLINE CHECK IN

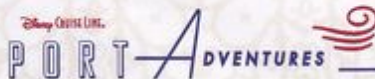
If you would like to have your boarding passes printed for you onboard and have your luggage taken to the airport for you, register before Wednesday. If you have a Disney Cruise Line airport transfer to Orlando International Airport and fly with one of the participating airlines, stop at Guest Services, Deck 3, Midship to register.

ON DEMAND TV

Watch Disney movies, Hollywood features, ABC Shows, and even captioned content, plus much more "On Demand" for FREE in the comfort of your stateroom! Bookmark your movie and come back to watch it later. Press MENU on your stateroom television remote control, and follow the prompts.

DISNEY VACATION CLUB® MEMBERS CELEBRATION

Members! Mix and mingle with other Members and learn how you can enhance your Membership! Please see a Disney Vacation Club representative on Deck 4, Midship, or call 7-2805 from your stateroom phone for more information.



Limited spaces available for our most popular tours, so visit the Port Adventures Desk today to reserve your place. Why not take a city tour, enjoy a stingray encounter, or experience some world famous snorkeling in Grand Cayman. For the families, we offer Dolphin experiences in Grand Cayman and Cozumel, so why not let this cruise be the time to enjoy this once in a lifetime experience.

SHOPPING

WHITE CAPS DUTY FREE

Buy 2 Disney Cruise Line or Mickey glasses and receive 10% discount on any 1 liter of liquor. Don't miss out on this great promotion. White Caps, Deck 3, Forward.

DOONEY AND BURKE

Don't miss out on a great offer for Dooney and Burke bags! Buy two Dooney & Bourke Bags and receive 20% off the second at equal or lesser value. With several styles to choose from, it's a perfect gift for the holidays. This great offer is valid all week in White Caps, Deck 3, Forward.

CHOPARD WATCHES

Chopard jewelry designers have created Disney watches as part of their Happy Diamond collection. These stunning watches with their floating diamonds are available in White Caps, Deck 3, Forward.

ALBERTO COLLECTION HOUSE OF TANZANITE PRESENTATION

Come learn about the beauty of Tanzanite, one of the worlds most elegant gems. This is a one-of-a-kind presentation you don't want to miss. Today in La Piazza, Deck 4, Aft at 11:00 a.m.

MICHELLE WATCHES

Swiss made watches with intricate details. Purchase face and bands separately to personalize the look. White Caps, Deck 3, Forward.

BIBBIDI BOBBIDI BOUTIQUE

Let the Halloween fun begin with a Halloween Minnie Mouse witch makeover. The package includes costume, hat, tights, hairstyle and makeup application. Minnie Mouse witch also gets cinch bag and princess sash. Bibbidi Bobbidi Boutique, Deck 5, Midship.

IMPORTANT INFORMATION

Security Notice

All Guests (including children) who wish to disembark the ship are required to present their Key to the World card at the gangway. A photo ID is also required for those Guests who are 18 years of age or older. Guests under the age of 18 are required to have a Parent, Guardian or other responsible adult sign up authorization form at the time it is given out if they wish to go ashore unaccompanied. Authorization forms are available at the gangways and Guest Services.

Please Note:

Please remember to use plenty of sunscreen and mosquito repellent when venturing ashore.

Cold and Flu Reminder

Please wash hands frequently and thoroughly, particularly before meals. Contact the Health Center by dialing 7-1923, should anyone in your party become ill.

Corridor Quiet Hours

As a courtesy to all our Guests, please recognize quiet hallway hours from 10:00 p.m. til 8:00 a.m.

Inclement Weather

For the safety of all Guests, outdoor events may be changed due to unforeseen weather conditions.

Environmental Message

With Disney's commitment to the Environment, please refrain from throwing anything over the Ship's side. Thank you!

No Reserved Seats Policy

As a courtesy to all our Guests, we kindly advise that the saving of seats is not permitted in the Walt Disney Theatre, and the saving of the sun loungers is not permitted on Deck 11, 12, and 13. Items left unattended will be returned to lost and found at Guest Services, Deck 3 Midship.

Smoking

For the comfort of our guests the following areas are designated as Smoking areas: - Promenade Deck (Deck 4), smoking is permitted Port Side, Aft only from 6:00 p.m. to 6:00 a.m.
- Currents - Deck 13, Forward, Port Side.
- Meridian Bar - Deck 12, Aft, Port Side, outside.
- Smoking is permitted on stateroom verandahs.
Smoking is prohibited inside all guest staterooms. Guests found smoking in their staterooms will be charged a \$250 stateroom recovery fee.

Walt Disney Theatre

Theatrical performances may use artificial fog, strobe lights, pyrotechnics and other special effects. For the safety of our performers and the comfort of those around you, the use of any photography, video recording device or any electronic equipment is prohibited.

Verandah Safety

Please do not leave any combustible materials on your balcony when not present in your stateroom for safety reasons.

SUNDAY, OCTOBER 28, 2012 - DAY AT SEA

BUENA VISTA THEATRE

	8:30 a.m. Run Time: 1 hr 40 min Rating: G
	11:00 a.m. Run Time: 1 hr 40 min Rating: PG
	3:00 p.m. Run Time: 1 hr 41 min Rating: PG
	5:15 p.m. & 8:15 p.m. Run Time: 2 hr 22 min Rating: PG-13
	11:00 p.m. Run Time: 1 hr 55 min Rating: PG-13

Character Appearances

- MICKEY MOUSE**
Deck 4, Balcony - 9:00 a.m., 10:00 a.m., 5:30 p.m., 7:45 p.m. & 9:45 p.m.
- CHIP & DALE**
Lobby Atrium (V)
9:15 a.m. & 10:15 a.m.
Deck 4, Balcony - 4:30 p.m.
- DONALD DUCK**
Lobby Atrium (P)
9:15 a.m. & 10:15 a.m.
Deck 4, Balcony - 6:00 p.m. & 8:15 p.m.
- MINNIE MOUSE**
Deck 4, Balcony - 9:30 a.m., 10:30 a.m., 5:00 p.m., 7:15 p.m. & 10:15 p.m.
Preludes
5:45 p.m. & 9:30 p.m.
- PLUTO**
Lobby Atrium (V)
9:45 a.m. & 10:45 a.m.
Deck 4, Balcony - 12:00 p.m.
Deck 13, Aft - 3:30 p.m.
- DAISY DUCK**
Lobby Atrium (P)
9:45 a.m. & 10:45 a.m.



(H) Hallway - (S) Starboard Side - (P) Port Side - (V) Vestibule
For details of daily Disney character appearances, refer to the character line on your Navigator Grid, or the digital character board in the Lobby Atrium.

YOUTH ACTIVITIES THEMED EXPERIENCES

- CLUBHOUSE SERIES** focuses on movement and features content which appeals to younger children.
- STORYBOOK SERIES** is designed with a strong connection to the Disney classic stories.
- TUMPLI UPSI SERIES** includes large ground games & movement-oriented activities.
- CREATE & INVENT SERIES** will have a tactile focus allowing children to create and admire their work.
- THE SPOTLIGHT SERIES** focuses on children's stage presence with lots of activities and enthusiasm.
- SOULVETI SERIES** are less active, but will challenge children with problem/solution-based activities.

YOUTH ACTIVITIES OPEN HOUSE
A non-secured program with activities for families, adults and children of all ages to enjoy together.

SHIP DIRECTORY

YOUTH ACTIVITIES	
DISNEY'S OCEANEER CLUB	Deck 5, Mid 9:00 AM - 11:30 PM
DISNEY'S OCEANEER LAB	Deck 5, Mid 9:00 AM - 1:00 AM
EDGE	Deck 13, Mid 10:00 AM - 1:00 AM
VIBE	Deck 4, Fwd 10:00 AM - 2:00 AM
IT'S A SMALL WORLD NURSERY	Deck 5, Mid 9:00 AM - 11:30 PM
RECREATION	
AQUADUCK	Deck 12, Mid 9:00 AM - 10:00 PM
AQUALAB	Deck 12, Aft 10:00 AM - 6:00 PM
DONALD'S POOL	Deck 11, Mid 6:00 AM - 12:00 MID
GOLF/SPORTS SIMULATORS	Deck 13, Aft 9:00 AM - 6:00 PM
GOOFY GOLF	Deck 13, Aft 8:00 AM - 10:00 PM
GOOFY'S SPORTS DECK	Deck 13, Aft 8:00 AM - 6:00 PM
MICKEY'S POOL	Deck 11, Mid 6:00 AM - 11:00 PM
MICKEY'S SUDE	Deck 11, Mid 9:00 AM - 6:00 PM
MISSIP DETECTIVE AGENCY	Decks 2 & 5, Mid 9:00 AM - 9:00 PM
NEMO'S REEF	Deck 11, Mid 9:00 AM - 7:00 PM
PORT ADVENTURES DESK	Deck 5, Mid 9:00 AM - 8:30 PM
QUIET COVE POOL	Deck 11, Fwd 6:00 AM - 12:00 MID
SATELLITE FALLS	Deck 13, Fwd 6:00 AM - 8:00 PM
SENSES FITNESS CENTER	Deck 11, Fwd 6:30 AM - 10:00 PM
GENERAL INFORMATION	
ARR-CADE	Deck 11, Aft 24 HOURS
ADVENTURES BY DISNEY	Deck 4, Mid 11:00 AM - 2:00 PM
DISNEY VACATION CLUB	Deck 4, Mid 8:30 PM - 10:00 PM
FUTURE CRUISE SALES DESK	Deck 4, Mid 2:30 PM - 10:00 PM
GUEST SERVICES	Deck 3, Mid 10:00 AM - 1:00 PM
MEDICAL HEALTH CENTER	Deck 1, Fwd 3:00 PM - 6:00 PM
PORT & SHOPPING DESK	Deck 4, Mid 7:30 PM - 8:30 PM
PRELUDES	Deck 3, Fwd 1:45 PM - 2:15 PM
SENSES SPA AND SALON	Deck 11, Fwd 8:00 PM - 8:45 PM
SHUTTERS PHOTO GALLERY	Deck 4, Mid 8:00 PM - 8:45 PM
SHUTTERS DIGITAL	Deck 4, Mid 10:00 AM - 1:00 PM
SHOPPING	Deck 4, Mid 7:30 PM - 11:00 PM
BIBBIDI BOBBIDI BOUTIQUE	Deck 5, Mid 9:00 AM - 9:00 PM
MICKEY'S MAINSAIL	Deck 3, Fwd 9:30 AM - 11:00 PM
QUACKS	Deck 11, Mid 10:00 AM - 4:00 PM
SEA TREASURES	Deck 3, Fwd 9:30 AM - 11:00 PM
VISTA GALLERY	Deck 4, Mid 10:00 AM - 10:00 PM
WHITE CAPS	Deck 3, Fwd 9:30 AM - 11:00 PM
WHOZITS & WHATZITS	Deck 11, Mid 10:00 AM - 4:00 PM

DINNER MENÙ
Aventura's Palate Pkcs: Bean Cuisine (Alcoholic)
Enchanted Garden Coastal Mole Cuisine
Royal Court: French Cuisine
Dining Times: 5:45pm & 9:15pm
Coco Bubb (Non Alcoholic)
Ooh La La (Non Alcoholic)

Evening Attire: Formal Attire

DINING & LOUNGES

CABANAS CONTINENTAL	Deck 11, Aft 7:00 AM - 7:30 AM
CABANAS	Deck 11, Aft 7:30 AM - 11:30 AM
ENCHANTED GARDEN	Deck 2, Mid 8:30 AM - 10:45 AM
ROYAL COURT	Deck 3, Mid 8:00 AM - 9:30 AM
LUNGH	
CABANAS	Deck 11, Aft 11:30 AM - 2:00 PM
ENCHANTED GARDEN	Deck 2, Mid 12:00 PM - 1:30 PM
FILMORE'S FAVORITES	Deck 11, Mid 11:00 AM - 6:00 PM
LUNG'S PIZZA	Deck 11, Mid 11:00 AM - 6:00 PM
ROYAL COURT	Deck 3, Mid 12:00 PM - 1:30 PM
TOW MAYER'S GRILL	Deck 11, Mid 11:00 AM - 11:00 PM
DINNER	
ANIMATOR'S PALATE	Deck 3, Aft 5:45 PM & 8:15 PM
ENCHANTED GARDEN	Deck 2, Mid 5:45 PM & 8:15 PM
ROYAL COURT	Deck 3, Mid 5:45 PM & 8:15 PM
CABANAS TABLE SERVICE	Deck 11, Aft 6:30 PM - 8:30 PM
PAOLO (18+) <i>(Reservations, Menu, 5th Avail.)</i>	Deck 12, Aft 6:00 PM - 8:30 PM
ROMY (18+) <i>(Reservations, Menu, 5th Avail.)</i>	Deck 12, Aft 6:00 PM - 8:30 PM
LATE NIGHT SNACKS	
LA PIZZA (18+)	Deck 4, Aft 10:45 PM - 11:45 PM
LUNG'S PIZZA	Deck 11, Mid 9:30 PM - 12:30 AM
BEVERAGE STATION	Deck 11, Mid 24 HOURS
EYE SCREAM	Deck 11, Mid 11:00 AM - 11:00 PM
ROOM SERVICE	Dial 0 24 HOURS

ENTERTAINMENT - LOUNGES - BARS

Adults must be 21 and older to consume alcoholic beverages.

BOB VOYAGE	Deck 3, Mid 9:00 AM - 11:00 PM
COVE BAR (18+)	Deck 11, Fwd 10:00 AM - 11:00 PM
COVE CAFE (18+)	Deck 11, Fwd 7:00 AM - 12:00 MID
CURRENTS (18+)	Deck 13, Fwd 10:00 AM - 11:00 PM
D LOUNGE	Deck 4, Mid SHOWTIMES
FROZONE TREATS	Deck 11, Mid 11:00 AM - 11:00 PM
LA PIZZA	Deck 4, Aft 12:30 PM - 12:00 MID
MERIBIAN (18+)	Deck 12, Aft 10:00 AM - 12:00 MID
O'GILLS PUB	Deck 4, Aft 12:00 PM - 12:00 MID
OOH LA LA (18+)	Deck 4, Aft 5:00 PM - 12:00 MID
OUTLOOK	Deck 14, Mid SUNSET TIMES
SKYLINE (18+)	Deck 4, Aft 5:00 PM - 12:00 MID
THE TUBIE (18+)	Deck 4, Aft 10:00 PM - 2:00 AM
VISTA CAFE	Deck 4, Mid 7:30 AM - 10:00 PM
WAVES	Deck 12, Aft 10:30 AM - 6:30 PM

Consumers who order raw or partially cooked, ready-to-eat food of animal origin, are hereby informed that the food is not sufficiently cooked to ensure its safety.



TIME ZONE CHANGE

Remember to turn your clocks **BACK 1 HOUR** upon retiring on **SUNDAY** evening, or first thing **MONDAY** morning.

IMPORTANT NUMBERS
Fire/Security: 7-3001
Medical Emergency: 7-3000
Health Center: 7-1923