

PERSONAL NAVIGATOR

WEDNESDAY, MARCH 13, 2013

Sunrise: 6:29 a.m. Sunset: 6:29 p.m.

Evening Attire: Cruise Casual

All Ashore: 7:45 a.m.

All Aboard: 4:30 p.m.

Wednesday: Partly Sunny High: 75°F/24°C

Thursday: Partly Sunny High: 73°F/23°C

SAN JUAN, PUERTO RICO

the Magic DAVE SHOW

WALT DISNEY THEATRE

Decks 3 & 4, Forward

6:15 p.m. & 8:30 p.m.



As a courtesy to all Guests, we kindly advise that the saving of seats is **not** permitted in the Walt Disney Theatre.



Assistance available at the entrance to the Walt Disney Theatre 30 minutes prior to show time.



San Juan Port Information

With its cobblestone streets, brightly colored buildings and a history that stretches back to the Conquistadors, San Juan is a popular tourist destination. The oldest city under U.S. jurisdiction, it offers a warm climate throughout the year, with temperatures sizzling in the summer. Mountains cover over half of the island terrain, but the geography of Puerto Rico also includes rain forests, deserts and caves.

Old San Juan is the oldest settlement within Puerto Rico and is the historic colonial section of San Juan, Puerto Rico. In 1508, Juan Ponce de León founded the original settlement. In 1509, the settlement was abandoned and moved to a site which was then called "Puerto Rico" (meaning "rich port"). In 1521, the name "San Juan" was added, and the newer settlement was given its formal name of "San Juan Bautista de Puerto Rico."

Prior to the 19th century the area outside the city walls occupying the east side of Old San Juan was almost uninhabited. In 1865, the government of San Juan approved a resolution promoting the city expansion across the land of Puerta de Tierra. In 1897, the demolition was officially started and by 1899, the population of Puerta de Tierra had risen to 5,453 while the area comprising the old city had a population of roughly 18,000.



Get ready for a jammin', slammin', splashin' good time at the new Disney Channel Poolside Jam Fest at Sea! Imagine all of your favorite Disney Channel music stars coming together for an afternoon of contests, great music, and hot videos all under the Caribbean sun!

Deck Stage,
Deck 11, Midship,
4:30 p.m.

Don't Miss:

Art of The Theme Show Tour (18+)

Pre-Book at Guest Services, Deck 3, Midship
Join us on a guided ship tour and discover the key ingredients that make the Disney Fantasy cruise ship one-of-a-kind.

Family Quest

D Lounge, Deck 4 - 9:45 p.m.
Enjoy the wildest and wackiest scavenger team event on the seven seas!

Pop! (18+)

The Tube, Deck 4, Aft - 10:15 p.m.
Have you been told you are full of useless information about pop culture? If the answer is "Yes", then you have what it takes to play the high energy game show all about the world of Pop!

80's/90's Remix with Guest DJ Streak (18+)

The Tube, Deck 4, Aft - 11:15 p.m.
Join Guest DJ Streak, as he spins the tunes and remix the 80's & 90's!

Disney Cruise Line

PORT ADVENTURES

IMPORTANT INFORMATION

Please check your tour tickets for meeting times and locations.
Visit the Port Adventures Desk, Deck 5, Midship for any questions.

DINNER MENU

Animator's Palate : Prince and Princess Menu
Enchanted Garden : Prince and Princess Menu
Royal Court : Prince and Princess Menu

DRINK OF THE DAY

Paradise (Alcoholic)
Princess Delight (Non Alcoholic)

IMPORTANT NUMBERS

Fire/Security: 7-3001
Medical Emergency: 7-3000
Health Center: 7-1923

FUN FOR ALL AGES HIGHLIGHTS

DISNEY TRIVIA

D Lounge, Deck 4, Midship - 3:15 p.m.

Navigate your way through another round of questions to test how much you really know about Disney.



JAM FEST AT SEA

Deck Stage, Deck 11, Midship - 4:30 p.m.

Are you ready for a jammin' good time? Imagine your favorite Disney Channel music and stars coming together to create the biggest Jam Fest at Sea! Great music, cool music videos and hot dance moves that are off the charts. Come out to be part of the action!

PLAYHOUSE D LOUNGE

D Lounge, Deck 4, Midship - 5:15 p.m.

Calling our youngest of cruisers! Here is a special Playtime that is just for you. Come meet new friends and join in on the fun as your Cruise Staff team takes you through interactive activities made just for you!

OFFICER PIN TRADING

Preludes, Deck 3, Forward - 7:30 p.m.

Come trade pins with the officers of the Disney Fantasy.

FAMILY QUEST

The Tube, Deck 4, Aft - 9:45 p.m.

Enjoy the wildest and wackiest scavenger team event on the seven seas!



SALUDOS AMIGOS FIESTA

D Lounge, Deck 4, Midship - 10:15 p.m.

Come see what Donald and his friends are up to this time. Bring the family out to this interactive dance party featuring fun Latin music! Your family will learn to Salsa, Merengue and just have a Latin good time!

DISNEY KARAOKE

D Lounge, Deck 4, Midship - 10:45 p.m.

Be a singing superstar when you and your family take the stage and sing along to your favorite song.



ADULT ACTIVITY HIGHLIGHTS

SENSES SPA FITNESS CLASSES & SEMINARS

Sunrise Stretch - Senses Fitness Center - 7:00 a.m.

Fab Abs - Senses Fitness Center - 7:30 a.m. & 5:00 p.m.

Body Sculpt Boot Camp (Nom. Fee) - Senses Fitness Center - 8:00 a.m.

Core Conditioning Pilates - Senses Fitness Center - 4:00 p.m.

Facial Workshop - Senses Spa & Salon - 4:30 p.m.



CLUB
18*21

CLUB 18*21 - ARR-CADE SOCIAL

Arr-cade, Deck 11, Aft - 5:00 p.m.

CLUB 18*21 - MIXER

O'Gills Pub, Deck 4, Aft - 10:00 p.m.

PUB QUIZ

O'Gills Pub, Deck 4, Aft - 1:00 p.m.

Think you've got what it takes? Come and test your knowledge.

ART OF THE THEME SHOW TOUR

Pre-Book at Guest Services, Deck 3, Midship

Join us on a guided ship tour and discover the key ingredients that make the Disney Fantasy cruise ship one-of-a-kind.

ESPN DREAM TEAM DRAFT DAY - BASKETBALL

O'Gills Pub, Deck 4, Aft - 5:30 p.m.

Join the "Commissioner" and engage in this interactive fantasy basketball draft unlike anything you've ever seen! Can YOU draft the greatest basketball team of All-Time?

POPI!

The Tube, Deck 4, Aft - 10:15 p.m.

Have you been told you are full of useless information about pop culture? If the answer is "Yes", then you have what it takes to play the high energy game show all about the world of Pop!

80'S MUSIC CHALLENGE

The Tube, Deck 4, Aft - 10:45 p.m.

"Moon Walk" back to the 80's, as we put your musical knowledge of the decade to the test.

80'S/90'S REMIX WITH GUEST DJ STREAK

The Tube, Deck 4, Aft - 11:15 p.m.

Join Guest DJ Streak, as he spins the tunes and remix the 80's & 90's!

MEGA RAFFLE JACKPOT BINGO

**D Lounge, Deck 4,
Midship**

Card Sales - 7:15 p.m.

Game Starts - 7:30 p.m.

Join your Cruise Staff for family Bingo fun! Four cash prize games. Plus, great raffle prize packs to be won and free Disney goodies for all in attendance! Don't miss out on the fun!



YOUTH ACTIVITY HIGHLIGHTS

DINE & PLAY

A convenience for families dining at 8:15 p.m., our Youth Activities Counselors will be available at 9:15 p.m. at the entrance of Royal Court, Enchanted Garden and Animator's Palate dining rooms to bring registered children to join the fun in the Youth Activity areas.



Deck 5, Midship (7-1440)
(3-12 years old) 7:30 a.m. - 11:00 p.m.

LITTLE EINSTEIN'S ADVENTURE

10:30 a.m.

Your junior cruisers will have the time of their lives with this program inspired by their favorite show with fun activities guaranteed to make them feel like a little genius!

PLUTO'S PAJAMA PARTY

8:30 p.m.

Bring the little ones in their pajamas but there will be anything but sleep when Pluto and friends host the ultimate slumber party!



Deck 5, Midship (7-1445)
(3-12 years old) 10:00 a.m. - 1:00 a.m.

ANIMATION CELLS

1:00 p.m.

Learn what it takes to be a Disney Animator, then put your new skills to the test as you create your very own animation cell.

SUPER SLOPPY SCIENCE - VOLCANOES

3:30 p.m.

Join Professor Make-O-Mess in some of the most extreme experiments you will ever seen in the world of Super Sloppy Science!



Deck 13, Midship (7-9743)
(11-14 years old) 10:00 a.m. - 1:00 a.m.

ESPN DREAM TEAM DRAFT DAY - BASEBALL

1:45 p.m.

Play ball! Join the "Commissioner" and engage in this interactive fantasy baseball draft unlike anything you've ever seen! Can YOU draft the greatest baseball team of All-Time?

ANYONE CAN COOK: CUPCAKES

7:00 p.m.

Anyone can cook as we work together to create some of our favorite treats. From our galley to yours; join our Chef as they show you how to create cupcakes!



Entrance on Deck 4, Forward (7-9418)
(14-17 years old) 12:00 p.m. - 2:00 a.m.

DISNEY ANIMATION: CARTOON PHYSICS

3:30 p.m.

Go behind the scenes at Walt Disney Animation Studios and see how flat drawings and pencil lines can come to life through basic techniques such as Stretch and Squash, and create your own "bouncing ball" animation exercise in this entertaining and fun enrichment program.

THAT'S HILARIOUS

9:00 p.m.

Ever wanted to show off your comedy skills? Then be a part of the cast for the crazy improv show "That's Hilarious" and put on a live show for your family and friends.

BUENA VISTA THEATRE

Today's Movies

DOLBY 3D



1:00 p.m.
Run Time: 1 hr 41 min
Rating: PG



3:00 p.m.
Run Time: 2 hr 07 min
Rating: PG

DOLBY 3D



5:30 p.m. & 8:15 p.m.
Run Time: 1 hr 53 min
Rating: PG



10:30 p.m.
Run Time: 2 hr 07 min
Rating: PG



Bring the family out to this interactive dance party featuring The Three Amigos. We will party with Donald Duck, learn Salsa, Merengue and have a Latin good time!

**D Lounge,
Deck 4, Midship,
10:15 p.m.**



Have you been told you are full of useless information about pop culture? If the answer is "Yes," then you have what it takes to play the high energy game show all about the world of Pop!

**The Tube (18+),
Deck 4, Aft,
10:15 p.m.**

YOUTH ACTIVITIES OPEN HOUSE

Open House is an opportunity for all to come and participate in a variety of exciting activities and free time in the Oceaneer Club, Lab and Edge throughout the cruise. During these times secured programming will still be offered in the other venue for those looking to check their children into care.

Disney's Oceaneer Club: 10:00 a.m. - 12:00 p.m.

Vibe: 11:00 a.m. - 12:00 p.m.

Edge: 9:00 a.m. - 10:00 a.m.

MORE TO ENJOY WHILE ONBOARD

PLAN YOUR NEXT CRUISE

Can't wait for your next Disney Cruise Line vacation? Don't wait to book your next cruise! You'll save 10%, receive up to a \$200 onboard credit, and pay a reduced deposit when you book today. Just visit the Future Cruise Sales Desk, Deck 4, Midship, or call 7-2848 for more information.

ADVENTURES BY DISNEY

Join us for a special presentation tomorrow to learn what traveling with Adventures by Disney is all about. See our Adventure Guide on Deck 4, Midship.

PORT & SHOPPING INFORMATION

Don't miss the incredible shopping in San Juan all within walking distance from the ship. Make sure to pick up your shopping coupons on the gangway. Meet Johan & Marissa at Blue Diamond at 12:30 p.m. for the chance to win your very own Pandora Bracelet. Blue Diamond #6 on your Port Shopping Map.

ONBOARD AIRLINE CHECK IN

If you would like to have your boarding passes printed for you onboard and have your luggage taken to the airport for you, register by midnight tonight. If you have your luggage taken to the airport for you, register by midnight tonight. If you have your luggage taken to the airport for you, register by midnight tonight. If you have your luggage taken to the airport for you, register by midnight tonight.

SURF @ SEA

\$0.75 per minute, or save money by buying blocks of time. \$55.00 for 100 minutes, \$100.00 for 250 minutes and \$150.00 for 500 minutes. Wireless information sheets are available at Guest Services, Deck 3, Midship. Please note: Due to satellite connectivity, onboard internet service will be noticeably slower than you may be accustomed to and may at times be interrupted or unavailable.

ON DEMAND TV

Watch Disney movies, Hollywood features, ABC Shows, and even captioned content, plus much more "On Demand" for FREE in the comfort of your stateroom! Bookmark your movie and come back to watch it later. Press MENU on your stateroom television remote control, and follow the prompts.

Disney Cruise Line. PORT ADVENTURES

Welcome to San Juan: endless sand, swashbuckling history lessons and wildly diverse tropical terrain. The sun-washed backyard of the United States is a place locals fittingly call the "Island of Enchantment." Please visit our friendly Port Adventures Team at the Port Adventures Desk, located in Deck 5, Midship to look for adventures ashore.

SHOPPING

GODIVA® CHOCOLATE

Did anyone say chocolate? Gourmet Belgian chocolate indulgence from Godiva® Chocolatier. White Caps, Deck 3, Forward.

VISTA GALLERY

Toy Story, Monster's Inc., Finding Nemo, Up - what's your favorite Disney-Pixar film? You have a chance to purchase a piece of Disney-Pixar artwork to take home with you today! Just stop by the Vista Art Gallery to see the Disney-Pixar Collection. Vista Art Gallery, Deck 4, Midship.

OFFICER PIN TRADING

Come and trade pins with the officers of the Disney Fantasy at 7:30 p.m. in Preludes, Deck 3, Forward.

MAUI DIVERS - SIGNATURE ALOHA HEART COLLECTION

Discover a South Pacific secret when you view Maui Divers Jewelry's signature Aloha Heart Collection. Friendly sales associates can help you with this exclusive design while you find the hidden message of Aloha. Discovery awaits at White Caps, Deck 3, Forward.

CHAMILIA EXCLUSIVE!

Remember your Disney Cruise forever! Get 10% off the Disney ship charm when you purchase a Chamilia bracelet, necklace or pair of earrings. Offer only available in White Caps, Deck 3, Forward.

BIBBIDI BOBBIDI BOUTIQUE

Make your Princesses' Fantasies come true with the Fantasy package. She receives a headband, tutu and T-shirt. Bibbidi Bobbidi Boutique, Deck 5, Midship.

Due to port regulations, when the ship is docked, the stores will remain closed.



SENSES
SPA & SALON

PAMPER PACKAGE

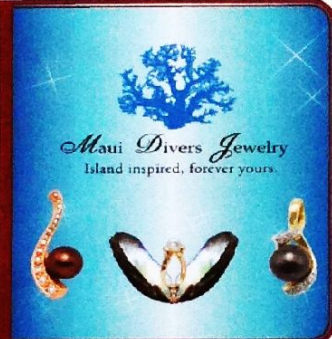
- 50 minute Full Body Massage
- Foot & Ankle Massage
- Indian Scalp Massage
- 25 Minute Booster Facial

ONLY \$149

Call Senses Spa & Salon, 7-1465

MAUI DIVERS TRUNK SHOW

With most of Maui Divers' jewelry created in beautiful Honolulu, you can be sure your island memories are captured in an authentic piece of paradise. Choose from fragrant plumerias, Hawaiian honu (turtles) and more. This week onboard, White Caps, Deck 3, Forward



Shutters

GET THE PICTURE!

Do you only need a small number of digital images of your photos? We now offer two digital packages where you can choose your selected images in the comfort of your own home! Send them to friends or upload them on social media sites, the choice is yours! Please see one of our friendly Shutters staff to explain this great new product. Your photos will be available for viewing on our interactive kiosks in Shutters digital as well as in your personal photo folder in Shutters, Deck 4, Midship, Conditions applies.

*Please note that photos are available for viewing on our interactive photo kiosks approximately five hours after being taken and are only available for purchase during this cruise.

IMPORTANT INFORMATION

Security Notice

All Guests (including children) who wish to disembark the ship are required to present their Key to the World card at the gangway. A photo ID is also required for those Guests who are 18 years of age or older. Guests under the age of 18 are required to have a Parent, Guardian or other responsible adult sign an authorization form at the time it is given out if they wish to go ashore unaccompanied. Authorization forms are available at the gangways and Guest Services.

Please Note:

Please remember to use plenty of sunscreen & mosquito/ Insect repellent when venturing ashore.

Cold and Flu Reminder

Please wash hands frequently and thoroughly, particularly before meals. Contact the Health Center by dialing 7-1223, should anyone in your party become ill.

Corridor Quiet Hours

As a courtesy to all our Guests, please recognize quiet hallway hours from 10:00 p.m. to 8:00 a.m.

Inclement Weather

For the safety of all Guests, outdoor events may be changed due to unforeseen weather conditions.

Environmental Message

With Disney's commitment to the Environment, please refrain from throwing anything over the Ship's side. Thank you!

No Reserved Seats Policy

As a courtesy to all our Guests, we kindly advise that the saving of seats is not permitted in the Walt Disney Theatre, and the saving of the sun loungers is not permitted on Deck 11, 12, and 13. Items left unattended will be returned to lost and found at Guest Services, Deck 3 Midship.

Smoking

For the comfort of our guests the following areas are designated as Smoking areas: - Promenade Deck (Deck 4), smoking is permitted Port Side, Aft only from 6:00 p.m. to 6:00 a.m. - Currents - Deck 13, Forward, Port Side. - Meridian Bar - Deck 12, Aft, Port Side, outside. - Smoking is permitted on stateroom verandahs. Smoking is prohibited inside all guest staterooms. Guests found smoking in their staterooms will be charged a \$250 stateroom recovery fee.

Walt Disney Theatre

Theatrical performances may use artificial fog, strobe lights, pyrotechnics and other special effects. For the safety of our performers and the comfort of those around you, the use of any photography, video recording device or any electronic equipment is prohibited.

Verandah Safety

Please do not leave any combustible materials on your balcony when not present in your stateroom for safety reasons.

WEDNESDAY, MARCH 13, 2013 - SAN JUAN

BUENA VISTA THEATRE

DOLBY 3D



1:00 p.m.
Run Time:
1 hr 41 min
Rating: PG

DOLBY 3D



3:00 p.m.
Run Time:
2 hr 07 min
Rating: PG



5:30 & 8:15 p.m.
Run Time:
1 hr 53 min
Rating: PG



10:30 p.m.
Run Time:
2 hr 07 min
Rating: PG

Character Appearances

MICKEY MOUSE

Deck 4, Balcony
3:30 p.m. & 4:00 p.m.
Lobby Atrium (H)
5:00 p.m. & 7:15 p.m.

DISNEY FRIENDS

Lobby Atrium - 3:30 p.m.

TINKER BELL

Lobby Atrium (V)
4:30 p.m., 5:30 p.m.
7:30 p.m. & 9:30 p.m.

PINOCCHIO

Deck 4, Balcony - 4:45 p.m.
Lobby Atrium (P) - 7:45 p.m.
Preludes - 10:00 p.m.

ARIEL

Lobby Atrium (P) - 4:45 p.m.
Deck 4, Balcony - 10:00 p.m.

CAPTAIN HOOK & MR SMEE

Deck 4, Balcony
5:15 p.m., 7:15 p.m. & 9:30 p.m.

PETER PAN

Lobby Atrium (P)
5:15 p.m. & 7:15 p.m.

Lilo & Stitch

Preludes
5:30 p.m. & 9:30 p.m.
Lobby Atrium (P) - 8:15 p.m.

CINDERELLA

Lobby Atrium
5:30 p.m. & 9:45 p.m.

CHIP & DALE

Lobby Atrium (H) - 5:30 p.m.

ALADDIN & GENIE

Deck 4, Balcony
5:45 p.m. & 8:15 p.m.
Lobby Atrium (P) - 10:00 p.m.

SNOW WHITE & DOPEY

Lobby Atrium (P)
5:45 p.m. & 9:30 p.m.
Deck 4, Balcony - 7:45 p.m.

MINNIE MOUSE

Lobby Atrium (H) - 7:45 p.m.

DONALD DUCK

Lobby Atrium (H) - 9:30 p.m.

GOOFEY

Lobby Atrium (H) - 10:00 p.m.

(H) Hallway - (S) Starboard Side - (P) Port Side - (V) Vestibule

For details of daily Disney character appearances, refer to the character line in your Navigator Grid or the digital character board in the Lobby Atrium.

YOUTH ACTIVITIES THEMED EXPERIENCES

CLUBHOUSE SERIES

focuses on movement and features content which appeals to younger children.

STORYBOOK SERIES

is designed with a strong connection to the Disney classic stories.

JUMP UP! SERIES

includes large ground games & movement-oriented activities.

CREATE & INVENT SERIES

will have a tactile focus allowing children to create and admire their work.

IN THE SPOTLIGHT SERIES

focuses on children's stage presence with lots of activities and enthusiasm.

SOLVE IT! SERIES

are less active, but will challenge children with problem/solutions-based activities.

YOUTH ACTIVITIES OPEN HOUSE

A non-secured program with activities for families, adults and children of all ages to enjoy together.

SHIP DIRECTORY

YOUTH ACTIVITIES

DISNEY'S OCEANFRER CLUB	DECK 5, MID	7:30 AM - 11:00 PM
DISNEY'S OCEANFRER LAB	DECK 5, MID	10:00 AM - 1:00 AM
EDGE	DECK 13, MID	10:00 AM - 1:00 AM
VIBE	DECK 4, FWD	12:00 PM - 2:00 AM
IT'S A SMALL WORLD NURSERY	DECK 5, MID	7:30 AM - 11:00 PM

RECREATION

AQUADUCK	DECK 12, MID	9:00 AM - 10:00 PM
AQUALAB	DECK 12, AFT	1:00 PM - 7:00 PM
DONALD'S POOL	DECK 11, MID	6:00 AM - 12:00 MID
GOLF/SPORTS SIMULATORS	DECK 13, AFT	9:00 AM - 6:00 PM
GOOFEY GOLF	DECK 13, AFT	8:00 AM - 10:00 PM
GOOFEY'S SPORTS DECK	DECK 13, AFT	8:00 AM - 6:00 PM
MICKEY'S POOL	DECK 11, MID	6:00 AM - 11:00 PM
MICKEY'S SLIDE	DECK 11, MID	9:00 AM - 6:00 PM
MIDSHIP DETECTIVE AGENCY	DECK 2 & 5, MID	9:00 AM - 10:00 PM
NEMO'S REEF	DECK 11, MID	9:00 AM - 7:00 PM
PORT ADVENTURES DESK	DECK 5, MID	7:00 AM - 11:00 AM
QUIET COVE POOL	DECK 11, FWD	6:00 AM - 12:00 MID
SATELLITE FALLS	DECK 13, FWD	6:00 AM - 6:00 PM
SENSES FITNESS CENTER	DECK 11, FWD	6:30 AM - 10:00 PM

GENERAL INFORMATION

ARR-CAFE	DECK 11, AFT	24 HOURS
ADVENTURES BY DISNEY	DECK 4, MID	3:00 PM - 5:00 PM 7:30 PM - 9:00 PM
DISNEY VACATION CLUB	DECK 4, MID	5:30 PM - 10:00 PM
FUTURE CRUISE SALES DESK	DECK 4, MID	9:00 AM - 10:00 AM 4:00 PM - 6:00 PM 7:30 PM - 10:00 PM
GUEST SERVICES	DECK 3, MID	24 HOURS
MEDICAL HEALTH CENTER	DECK 1, FWD	9:30 AM - 11:00 AM 4:30 PM - 7:00 PM
PORT & SHOPPING DESK	DECK 4, MID	7:30 PM - 8:30 PM
PRELUDES	DECK 3, FWD	5:45 PM - 6:30 PM 8:00 PM - 8:45 PM
SENSES SPA AND SALON	DECK 11, FWD	8:00 AM - 10:00 PM
SHUTTERS PHOTO GALLERY	DECK 4, MID	5:00 PM - 10:30 PM
SHUTTERS DIGITAL	DECK 4, MID	24 HOURS

SHOPPING

BIBBIDI BOBBIDI BOUTIQUE	DECK 5, MID	9:00 AM - 9:00 PM
MICKEY'S MAINSAIL	DECK 3, FWD	5:30 PM - 11:00 PM
QUACKS	DECK 11, MID	
SEA TREASURES	DECK 3, FWD	5:30 PM - 11:00 PM
VISTA GALLERY	DECK 4, MID	6:00 PM - 10:00 PM
WHITE CAPS	DECK 3, FWD	5:30 PM - 11:00 PM
WHOZITS & WHATZITS	DECK 11, MID	

DINNER MENU
 Animator's Palate: Prince & Princess
 Enchanted Garden: Prince & Princess
 Royal Court: Prince & Princess
 Dining Times: 5:45 p.m. & 8:15 p.m.

DRINK OF THE DAY
 Paradise (Alcoholic)
 Princess Delight (Non Alcoholic)

WEATHER FORECAST
 Wednesday: Partly Sunny
 High: 75°F/24°C
 Thursday: Partly Sunny
 High: 73°F/23°C

Evening Attire: Cruise Casual

DINING & LOUNGES

BREAKFAST

CABANAS CONTINENTAL	DECK 11, AFT	6:15 AM - 6:45 AM
CABANAS	DECK 11, AFT	6:45 AM - 10:30 AM
ENCHANTED GARDEN	DECK 2, MID	7:15 AM - 9:30 AM
ROYAL COURT	DECK 3, MID	8:00 AM - 9:30 AM

LUNCH

CABANAS	DECK 11, AFT	12:00 PM - 2:15 PM
ENCHANTED GARDEN	DECK 2, MID	
FILMORE'S FAVORITES	DECK 11, MID	11:00 AM - 6:00 PM
LUIGI'S PIZZA	DECK 11, MID	11:00 AM - 6:00 PM
ROYAL COURT	DECK 3, MID	12:00 PM - 1:30 PM
TOW MATER'S GRILL	DECK 11, MID	11:00 AM - 11:00 PM

DINNER

ANIMATOR'S PALATE	DECK 3, AFT	5:45 PM & 8:15 PM
ENCHANTED GARDEN	DECK 2, MID	5:45 PM & 8:15 PM
ROYAL COURT	DECK 3, MID	5:45 PM & 8:15 PM
CABANAS TABLE SERVICE	DECK 11, AFT	6:30 PM - 8:30 PM
PALO (18+) (RESERVATIONS REQ. & NOW FEE APPLIES)	DECK 12, AFT	6:00 PM - 8:30 PM
REMY (18+) (RESERVATIONS REQ. & NOW FEE APPLIES)	DECK 12, AFT	6:00 PM - 8:30 PM

LATE NIGHT SNACKS

LA PIAZZA (18+)	DECK 4, AFT	10:45 PM - 11:45 PM
LUIGI'S PIZZA	DECK 11, MID	9:30 PM - 12:30 AM

ADDED FEATURES

BEVERAGE STATION	DECK 11, MID	24 HOURS
EYE SCREAM	DECK 11, MID	11:00 AM - 11:00 PM
ROOM SERVICE	DIAL O	24 HOURS

ENTERTAINMENT - LOUNGES - BARS

Adults must be 21 and older to consume alcoholic beverages.

BON VOYAGE	DECK 3, MID	2:00 PM - 10:30 PM
COVE BAR (18+)	DECK 11, FWD	11:00 AM - 11:00 PM
COVE CAFE (18+)	DECK 11, FWD	7:00 AM - 12:00 MID
CURRENTS (18+)	DECK 13, FWD	11:00 AM - 12:00 MID
D LOUNGE	DECK 4, MID	SHOWTIMES
FROZONE TREATS	DECK 11, MID	11:00 PM - 11:00 PM
LA PIAZZA	DECK 4, AFT	8:00 PM - 12:00 MID
MERIDIAN (18+)	DECK 12, AFT	5:00 PM - 12:00 MID
O'GILLS PUB	DECK 4, AFT	8:00 PM - 12:00 MID
OOH LA LA (18+)	DECK 4, AFT	5:00 PM - 12:00 MID
OUTLOOK	DECK 14, MID	SUNSET TIMES
SKYLINE (18+)	DECK 4, AFT	5:00 PM - 12:00 MID
THE TUBE (18+)	DECK 4, AFT	10:00 PM - 2:00 AM
VISTA CAFE	DECK 4, MID	7:30 AM - 10:30 PM
WAVES	DECK 12, AFT	11:00 PM - 1:30 PM

Consumers who order raw or partially cooked, ready-to-eat food of animal origin, are hereby informed that the food is not sufficiently cooked to ensure its safety.

GOOFEY'S SPORTS
Digital Simulators

Sports Simulator
(Basketball, Baseball, Hockey, Football or Soccer) \$12 / half hr, \$20 / hr

Golf Simulator
\$25 / half hr, \$45 / hr

Reservations can be made at the Port Adventures Desk, Deck 5, Midship or at the Simulators, Deck 13, Aft

All Ashore: Approx. 7:45 a.m.

All Aboard: 4:30 p.m.

SHIP'S AGENT IN SAN JUAN

IMPORTANT NUMBERS

360 San Francisco Street,
San Juan, Puerto Rico 00901
Phone (787)725-2532. Fax (787) 724-0339

Fire/Security: 7-3001
Medical EMERGENCY: 7-3000
Health Center: 7-1923

Morning	8:30	8:45	9:00	9:15	9:30	9:45	10:00	10:15	10:30	10:45	11:00	11:15	11:30	11:45	12:00	12:15	12:30	12:45	1:00	1:15	1:30			
FUNNEL VISION					Dumbo (G) Funnel Vision				Pixar Short Films (G) Funnel Vision				Hannah Montana: The Movie (G) Funnel Vision											
MOVIES	Brave DOLBY 3D (PG) Buena Vista Theatre > 2:41 p.m.																							
FUN FOR ALL AGES	Port Adventures - Please check your tickets for meeting times and locations										Open House Vibe													
	Open House Edge					Open House Disney's Oceaneer Club					Midship Detective Agency Deck 2 & 5, Midship													
	Board Games Available in O'Gills Pub																							
ADULTS	Friends of Bill W. Outlook, Deck 14, Mid																			Pub Quiz O'Gills Pub				
	Books and Magazines Available in Cove Cafe																							
VIBE 14-17 YEARS OLD											Open House					Games Galore				Ice Cream Social				
EDGE 11-14 YEARS OLD	Open House					Chillin' in the Edge					Checkers Challenge					Animation Cells				Four Square				
OCEANEER LAB 3-12 YEARS OLD						Pictionary										Human Bingo					Youth Lunch		XBox® Kinect™	
						Magic Playfloor										GAGA Ball							Animation Cells	
OCEANEER CLUB 3-12 YEARS OLD	Play-Doh		Disney Animation: Creating a Character						Crafts Galore		Little Einstein's Adventure			Memory Wall						Magic Playfloor				
	Morning Stretches					Open House																		

Afternoon	1:45	2:00	2:15	2:30	2:45	3:00	3:15	3:30	3:45	4:00	4:15	4:30	4:45	5:00	5:15	5:30	5:45	6:00	6:15	6:30	6:45					
FUNNEL VISION	101 Dalmatians (G) Funnel Vision											Jam Fest at Sea Funnel Vision				Toy Story (G) Funnel Vision										
MOVIES	Brave DOLBY 3D (PG) < 1:00 p.m. Buena Vista Theatre					Oz The Great and Powerful (PG) Buena Vista Theatre						Wreck-It Ralph (PG) Buena Vista Theatre					> 7:23 p.m.									
CHARACTER								Mickey Dk 4, Mid	Mickey Dk 4, Mid			Tinker Bell Pinocchio Lobby Atrium (V) Dk 4, Mid		Mickey Lobby Atrium (H)	Peter Pan Lobby Atrium (P)	Tinker Bell Snow White Lobby Atrium (V) Lobby Atrium (P)										
FUN FOR ALL AGES	XBox® Kinect™ - John Madden O'Gills Pub					Disney Trivia D Lounge					 Deck Stage			Playhouse D Lounge D Lounge					 Walt Disney Theatre							
	Midship Detective Agency Deck 2 & 5, Midship											Disney Animation: Persistence of Vision D Lounge					Live Piano with Tim Adshead Lobby Atrium									
ADULTS	Art of The Theme Show Tour (18+) Pre-Book at Guest Services										Club 18*21 - Arr-Cade Social Arr-cade					ESPN Dream Team Draft Day: Basketball O'Gills Pub										
	Books and Magazines Available in Cove Cafe											Core Conditioning Pilates Senses Fitness Center			Facial Workshop Senses Spa & Salon		Fab Abs Senses Fitness Center									
VIBE 14-17 YEARS OLD	Ice Cream Social					Matinee Movie			Hold The Phone		Disney Animation: Cartoon Physics			Create A Picture Frame		Create a Postcard			ESPN Dream Team Draft Day - Football							
EDGE 11-14 YEARS OLD	ESPN Dream Team Draft Day - Baseball					Digi-Hunt			Countdown		Dodgeball						Karaoke					Celebrity Heads				
OCEANEER LAB 3-12 YEARS OLD	Animation Cells			Marshmallow Madness			Disney Trivia			Elephant Soccer			Youth Dinner					Pictionary								
	Magic Show						Super Sloppy Science -Volcanoes											Magic Playfloor								
OCEANEER CLUB 3-12 YEARS OLD	Matinee Movie					Big Top Fun Fest!					4 Corners							Cruisin' with Crush								
	All About Me										Make Your Own Wand															

Evening	7:00	7:15	7:30	7:45	8:00	8:15	8:30	8:45	9:00	9:15	9:30	9:45	10:00	10:15	10:30	10:45	11:00	11:15	11:30	11:45	12:00	
FUNNEL VISION					Bolt (PG) Funnel Vision										The Game Plan (PG) Funnel Vision							
MOVIES					Wreck-It Ralph (PG) Buena Vista Theatre										Oz The Great and Powerful (PG) Buena Vista Theatre 							

Symbol for activities that will be repeated during the cruise

Youth Activities Open House

FOLD

Fold along the dotted lines and take me with you so you don't miss any of the fun

FOLD

IN THE SPOTLIGHT SERIES
SOLVE IT SERIES

JUMP UP! SERIES

CREATE & INVENT SERIES

CLUBHOUSE SERIES

STORYBOOK SERIES