

# PERSONAL NAVIGATOR



Sunrise: 7:11 a.m. Sunset: 5:47 p.m.  
 Evening Attire: Cruise Casual  
 All Ashore: 9:00 a.m. All Aboard: 5:30 p.m.

Tuesday: Partly Cloudy High: 81°F/27°C  
 Wednesday: Partly Cloudy High: 77°F/25°C

TUESDAY, FEBRUARY 19, 2013

COSTA MAYA, MEXICO

## Disney WISHES

On the eve of their graduation, three best friends go on a magical journey down the wishing well. A host of Disney characters help them discover the connection between children who are becoming adults, and adults who stay in touch with being a kid at heart.

**Walt Disney Theatre  
 Deck 3 & 4, Forward  
 6:15 p.m. & 8:30 p.m.**



Assistance available at the entrance to the Walt Disney Theatre 30 minutes prior to show time.



## Costa Maya Port Information

Costa Maya is a tourist region located on the Yucatán Peninsula 100 miles south of Playa del Carmen near the border of Belize in Mexico. Comprised of two small villages, Mahahual and Xcalak, Costa Maya provides a picture-perfect getaway the entire family is sure to love.

Early Mayans were predominant in the area from 200 B.C. to 900 A.D. In the 16th century, English pirates ravaged the coast and battled the Spanish for control of the region. At the end of the 19th century, the Mexican Navy took over the land. A treaty with Britain was signed soon after limiting the territorial rights of Mexico, thereby forcing Mexico to build a new trade port in Xcalak.

By the 1950's, the economy was flourishing as businesses - including stone and wood construction companies - made the area a supply center for the region. Steady growth continued until the mid-1990's when the government outlined a plan to make Costa Maya a tourist destination. Today, tourism is Costa Maya's main economic revenue stream and it's easy to understand why, thanks to the island's plethora of unspoiled natural beauty that has remained untouched for thousands of years.

### DOCKING

The ship will dock at the Puerto Costa Maya, located approximately 1/2 mile north of Mahahual.



### FAMILY CABARET

Featuring the Comedy & Magic of Levent, as he entertains the entire family in this fun-filled show.

**The Tube,  
 Deck 4, Aft,  
 7:30 p.m.**

## Don't Miss:

### Disney Channel on Deck

Deck Stage, Deck 11, Midship, Deck 11 - 4:00 p.m.  
 Don't change that channel! It's time for a Disney Channel pool party! Your Cruise Staff will host an exciting day of games and contests in between your favorite Disney Channel shows! So sit back, relax, and enjoy the sun!

### 50 Movie Quotes Trivia

O'Gills Pub, Deck 4, Aft - 4:00 p.m.  
 "Life is like a box of Chocolates" Know the movie? Join your Cruise Staff and test your Movie Quote knowledge.

### Saludos Amigos Fiesta

D Lounge, Deck 4, Midship - 10:15 p.m.  
 Bring the family out to this interactive dance party featuring The Three Amigos. We will party with Donald Duck, learn Salsa, Merengue and have a Latin good time!



Please check your tour tickets for meeting times and locations. Visit the Port Adventures Desk, Deck 5, Midship for any questions.

## DINNER MENU

Animator's Palate: Prince & Princess Menu  
 Enchanted Garden: Prince & Princess Menu  
 Royal Court: Prince & Princess Menu

## DRINK OF THE DAY

Key Lime Margarita (Alcoholic)  
 Cranberry NO-Jito (Non Alcoholic)

### IMPORTANT NUMBERS

Fire/Security: 7-3001  
 Medical Emergency: 7-3000  
 Health Center: 7-1923



# FUN FOR ALL AGES HIGHLIGHTS

## PAPER PLANE MAKING

*La Piazza, Deck 4, Aft - 2:00 p.m.*  
Create a fun flyer and watch it "soar".



## DISNEY CHANNEL ON DECK

*Deck Stage, Deck 11, Midship - 4:00 p.m.*  
Don't change that channel! It's time for a Disney Channel pool party! Your Cruise Staff will host an exciting day of games and contests in between your favorite Disney Channel shows! So sit back, relax, and enjoy the sun!

## DISNEY VACATION CLUB GROUP PREVIEW

*The Tube, Deck 4, Aft - 4:30 p.m.*  
Want to learn more about taking magical vacations year after year? Stop by our interactive group presentation to find out more information from a Disney Vacation Club representative.

## PLAYHOUSE D LOUNGE

*D Lounge, Deck 4, Midship - 5:00 p.m.*  
Calling our youngest of cruisers! Here is a special Playtime that is just for you. Come meet new friends and join in on the fun as your Cruise Staff team takes you through interactive activities made just for you!

## OFFICER PIN TRADING

*Preludes, Deck 3, Forward - 7:30 p.m.*  
Come trade pins with the officers of the Disney Fantasy.

## DISNEY TRIVIA

*D Lounge, Deck 4, Midship - 9:45 p.m.*  
Navigate your way through another round of questions to test how much you really know about Disney.

## FAMILY SUPERSTAR KARAOKE

*D Lounge, Deck 4, Midship - 10:45 p.m.*  
Join your Cruise Staff in D Lounge tonight and sing along to your favorite song - fun for everyone.

# ADULT ACTIVITY HIGHLIGHTS

## SENSES SPA FITNESS CLASSES & SEMINARS

*Sunrise Stretch* - Senses Fitness Center - 7:00 a.m.  
*Fab Abs* - Senses Fitness Center - 7:30 a.m. & 5:00 p.m.  
*Body Sculpt Boot Camp* (Nom. Fee) - Senses Fitness Center - 9:00 a.m.  
*Pathway to Yoga* - Senses Fitness Center - 4:00 p.m.

## TASTING CLASSES

*Coffee Seminar with Illy Specialist* (21+) - Meridian (Nom.Fee Pre Book) - 11:00 a.m.  
*Whiskey Tasting* (21+) - Meridian (Nom.Fee Pre Book) - 10:30 p.m.  
Please make reservations for tastings at Guest Services for a nominal fee.  
Tasting Seminars are only for Guest's 21 and Older.

## CLUB 18\*21 - SOCIAL

*Cove Cafe, Deck 11, Forward - 11:45 a.m.*

CLUB  
18\*21

## CLUB 18\*21 - ARR-CADE SOCIAL

*Arr-cade, Deck 11, Aft - 5:00 p.m.*

## CLUB 18\*21 - MIXER

*O'Gills Pub, Deck 4, Aft - 10:00 p.m.*

## POP!

*The Tube, Deck 4, Aft - 10:00 p.m.*  
Have you been told you are full of useless information about pop culture? If the answer is "Yes", then you have what it takes to play the high energy game show all about the world of Pop!

## 80'S MUSIC CHALLENGE

*The Tube, Deck 4, Aft - 10:30 p.m.*  
"Moon Walk" back to the 80's, as we put your musical knowledge of the decade to the test.

## GOING UNDERGROUND WITH GUEST DJ TIM MARTELL

*D Lounge, Deck 4, Midship - 11:15 p.m.*  
Hold onto the handrails as we take you underground with our Guest DJ Tim Martell.

# MEGA RAFFLE JACKPOT BINGO

**D Lounge, Deck 4, Midship**

**Card Sales - 7:15 p.m.**

**Game Starts - 7:30 p.m.**

Join your Cruise Staff for family Bingo fun! Four cash prize games. Plus, great raffle prize packs to be won and free Disney goodies for all in attendance! Don't miss out on the fun!





# YOUTH ACTIVITY HIGHLIGHTS

## DINE & PLAY

A convenience for families dining at 8:15 p.m., our Youth Activities Counselors will be available at 9:15 p.m. at the entrance of Royal Court, Enchanted Garden and Animator's Palate dining rooms to bring registered children to join the fun in the Youth Activity areas.



**Deck 5, Midship (7-1440)**  
(3-12 years old) **9:00 a.m. - 11:00 p.m.**

### ALOHA LUAU

9:15 a.m.

It's party time, Hawaiian style! Come join us for a Luau experience and learn how to dance like Lilo & Stitch.

### DISNEY ANIMATION: CREATING A CHARACTER

2:00 p.m.

Go behind the scenes at Walt Disney Animation Studios as Walt Disney himself talks about his most famous characters, then learn the basic techniques of drawing Mickey and Donald in this fun and interesting enrichment program.

### ONCE UPON A TIME

3:00 p.m.

Join Bartleby the Bookmaker for a magical, musical story time featuring a Disney Princess!

**OCEANEER LAB** **Deck 5, Midship (7-1445)**  
(3-12 years old) **9:00 a.m. - 12:00 mid**

### SUPER SLOPPY SCIENCE - EGGSPERIMENTS

9:30 a.m.

Join Professor Make-O-Mess in some of the most extreme experiments you will ever seen in the world of Super Sloppy Science!

### ANYONE CAN COOK

7:15 p.m.

Anyone can cook as we work together to create some of our favorite treats.



**Deck 13, Midship (7-9743)**  
(11-14 years old) **10:00 a.m. - 1:00 a.m.**

### ANIMATION CELLS

12:00 p.m.

Learn what it takes to be a Disney Animator, then put your new skills to the test as you create your very own animation cell.

### THAT'S HILARIOUS

7:30 p.m.

Ever wanted to show off your comedy skills? Then be a part of the cast for the crazy improv show "That's Hilarious" and put on a live show for your friends.



**Entrance on Deck 4, Forward (7-9418)**  
(14-17 years old) **10:00 a.m. - 2:00 a.m.**

### DREAM NOW! SEA HOW! - THEATRICAL

11:00 a.m.

Imagine a job where You are the person who brings to life the characters and their stories that have been imagined, dreamed and created. This is where you will meet one of the current Disney performers.

### ANIMATION CELLS

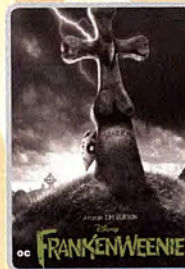
1:45 p.m.

Learn what it takes to be a Disney Animator, then put your new skills to the test as you create your very own animation cell.

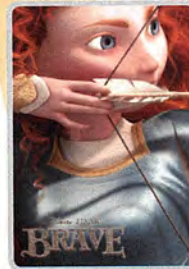
# BUENA VISTA THEATRE

## Today's Movies

OC - Open captioning



1:45 p.m.  
Run Time: 1 hr 24 min  
Rating: PG



3:45 p.m.  
Run Time: 1 hr 41 min  
Rating: PG

DOLBY 3D



5:45 p.m. & 8:15 p.m.  
Run Time: 1 hr 24 min  
Rating: PG

DOLBY 3D



10:30 p.m.  
Run Time: 2 hr 22 min  
Rating: PG-13



Bring the family out to this interactive dance party featuring The Three Amigos. We will party with Donald Duck, learn Salsa, Merengue and have a Latin good time!

**D Lounge,**  
**Deck 4, Midship,**  
**10:15 p.m.**



Have you been told you are full of useless information about pop culture? If the answer is "Yes", then you have what it takes to play the high energy game show all about the world of Pop!

**The Tube (18+),**  
**Deck 4, Aft,**  
**10:00 p.m.**

## YOUTH ACTIVITIES OPEN HOUSE

Open House is an opportunity for all to come and participate in a variety of exciting activities and free time in the Oceaneer Club, Lab and Edge throughout the cruise. During these times secured programming will still be offered in the other venue for those looking to check their children into care.

Edge: 9:00 a.m. - 10:00 a.m.    Disney's Oceaneer Lab: 1:00 p.m. - 2:30 p.m.  
Disney's Oceaneer Club: 9:00 a.m. - 10:00 a.m.



# MORE TO ENJOY WHILE ONBOARD



## ADVENTURES BY DISNEY

Join us for a special presentation on Thursday to learn what traveling with Adventures by Disney is all about. See our Adventure Guide on Deck 4, Midship, about saving 10% when you book onboard.



## COSTA MAYA SHOPPING

Shopping Guides Johan & Marissa will be available on the gangway from 9:00 a.m. - 10:00 a.m. for last minute shopping questions. Make sure to pick up your Shopping Coupons and VIP cards and don't miss the Shopping Party going on at Diamonds International #1a on your Shopping Map from 9:30 a.m. - 12:00 p.m.



## DISNEY VACATION CLUB® GROUP PREVIEW

Want to learn more about taking magical vacations year after year? Please see a Disney Vacation Club representative on Deck 4, Midship, or call 7-2805 from your stateroom phone for more information about our interactive group presentation.

## ONBOARD AIRLINE CHECK IN

If you would like to have your boarding passes printed for you onboard and have your luggage taken to the airport for you, register by midnight tomorrow. If you have a Disney Cruise Line airport transfer to Orlando International Airport and fly with one of the participating airlines, stop at Guest Services, Deck 3, Midship to register.

## ARR-CADE

Where can you be a ninja, play the guitar like a rock star, race a car down the streets of Tokyo and along the way WIN some great prizes? Arr-cade located Deck 11, Aft, where the pirates play.

## ON DEMAND TV

Watch Disney movies, Hollywood features, ABC Shows, and even captioned content, plus much more "On Demand" for **FREE** in the comfort of your stateroom! Bookmark your movie and come back to watch it later. Press MENU on your stateroom television remote control, and follow the prompts.





## SALON TASTER SPECIAL

- Scalp Massage
- European Facial
- Hand Treatment
- Sunglow Makeover
- Conditioning Hair Treatment
- Eye Collagen Treatment

- Foot & Ankle Massage
- Neck & Shoulder Massage

Three for 99.00  
 Five for 119.00  
 All Eight for 139.00

## TODAY'S SHOPPING SPECIAL

Stop by White Caps to try on the world's most memorable white diamond pieces and commemorate your cruise.

White Caps, Deck 3, Forward.



Sophia Fiori

## Shutters

## DIGITAL PACKAGES

Do you only need a small number of digital images of your photos? We now offer two digital packages where you can choose your selected images in the comfort of your own home! Send them to friends or upload them on social media sites, the choice is yours! Please see one of our friendly Shutters staff to explain this great new product. Your photos will be available for viewing on our interactive kiosks in Shutters Digital as well as in your personal photo folder in Shutters, Deck 4 Midship, Conditions applies.

*\*Please note that photos are available for viewing on our interactive photo kiosks approximately five hours after being taken and are only available for purchase during this cruise.*

## PORT ADVENTURES

Welcome to Costa Maya, a secluded destination on Mexico's stunning Riviera Maya! The port of Costa Maya is booming and there are many amazing new Port Adventures to choose from. There is limited availability on tours, so stop by the Port Adventures Desk, Deck 5, Midship, to reserve your place. Don't forget to plan ahead for Castaway Cay, where only a few Stingray encounters remain available.

## SHOPPING

**SOPHIA FIORI DIAMOND TRUNK SHOW**  
 Sophia Fiori is the world's leader in vivid colored diamonds and jeweler to the stars. The Sophia Fiori team has brought with them over \$1 million in diamonds at all price points from \$500 up to extravagant connoisseur pieces.  
 White Caps, Deck 3, Forward.

**VISTA ART GALLERY**  
 Stop by the Vista Art Gallery today to view our selection of Thomas Kinkade Limited Edition Disney paintings. While there, see if you can find some hidden characters in the artwork. Deck 4, Midship.

**OFFICER PIN TRADING**  
 Come and trade pins with the officers of the Disney Fantasy at 7:30 p.m. in Preludes, Deck 3, Forward.

**CHAMILIA EXCLUSIVE!**  
 Remember your Disney Cruise forever! Get 10% off the Disney ship charm when you purchase a Chamilia bracelet, necklace or pair of earrings.  
 Offer only available in White Caps, Deck 3, Forward

**O'GILLS PUB MERCHANDISE**  
 Get your very own O'Gills T-shirts, hats, mugs and O'Gills Irish Cream liquor. A great way to remember your sailing on the Disney Fantasy!  
 Available in White Caps and Sea Treasures, Deck 3, Forward.

**BIBBIDI BOBBIDI BOUTIQUE**  
 Make your Princesses' Fantasies come true with the Fantasy package. She receives a headband, tutu and T-shirt. Bibbidi Bobbidi Boutique, Deck 5, Midship.

Due to port regulations, when the ship is docked, the stores will remain closed.

### IMPORTANT INFORMATION

**Security Notice**  
 All Guests (including children) who wish to disembark the ship are required to present their Key to the World card at the gangway. A photo ID is also required for those Guests who are 18 years of age or older. Guests under the age of 18 are required to have a Parent, Guardian or other responsible adult sign an authorization form at the time it is given out if they wish to go ashore unaccompanied. Authorization forms are available at the gangways and Guest Services.

**Please Note:**  
 Please remember to use plenty of sunscreen & mosquito/ Insect repellent when venturing ashore.

**Cold and Flu Reminder**  
 Please wash hands frequently and thoroughly; particularly before meals. Contact the Health Center by dialing 7-1923, should anyone in your party become ill.

**Corridor Quiet Hours**  
 As a courtesy to all our Guests, please recognize quiet hallway hours from 10:00 p.m. til 8:00 a.m.

**Inclement Weather**  
 For the safety of all Guests, outdoor events may be changed due to unforeseen weather conditions.

**Environmental Message**  
 With Disney's commitment to the Environment, please refrain from throwing anything over the Ship's side. Thank you!

**No Reserved Seats Policy**  
 As a courtesy to all our Guests, we kindly advise that the saving of seats is not permitted in the Walt Disney Theatre, and the saving of the sun loungers is not permitted on Deck 11, 12, and 13. Items left unattended will be returned to lost and found at Guest Services, Deck 3 Midship.

**Smoking**  
 For the comfort of our guests the following areas are designated as Smoking areas: - Promenade Deck (Deck 4), smoking is permitted Port Side, Aft only from 6:00 p.m. to 6:00 a.m.  
 - Currents - Deck 13, Forward, Port Side.  
 - Meridian Bar - Deck 12, Aft, Port Side, outside.  
 -Smoking is permitted on stateroom verandahs. Smoking is prohibited inside all guest staterooms. Guests found smoking in their staterooms will be charged a \$250 stateroom recovery fee.

**Walt Disney Theatre**  
 Theatrical performances may use artificial fog, strobe lights, pyrotechnics and other special effects. For the safety of our performers and the comfort of those around you, the use of any photography, video recording device or any electronic equipment is prohibited.

**Verandah Safety**  
 Please do not leave any combustible materials on your balcony when not present in your stateroom for safety reasons.



4 of 6

<http://DisneyCruiseLineBlog.com>

DF0048 02-19-2013 ©DISNEY



Morning	8:30	8:45	9:00	9:15	9:30	9:45	10:00	10:15	10:30	10:45	11:00	11:15	11:30	11:45	12:00	12:15	12:30	12:45	1:00	1:15	1:30	
FUNNEL VISION	Dumbo (G) Funnel Vision							Pixar Short Films (G) Funnel Vision				Monsters, Inc. (G) Funnel Vision										
MOVIES																						
CHARACTER	Mickey Dk 4, Mid			Goofy Goofy's Sports Deck				Minnie Dk 4, Mid		Daisy Dk 4, Mid			Minnie Dk 4, Mid									
FUN FOR ALL AGES	Last Minute Shopping Advice Gangway				Board Games Available in O'Gills Pub																	
	Port Adventures - Please check your tickets for meeting times and locations																					
	Midship Detective Agency Deck 2 & 5, Midship																					
ADULTS	Friends of Bill W. Outlook, Deck 14, Mid						Coffee Seminar Meridian (Nom.Fee Pre Book)															
	Boot Camp (Nom. Fee) Senses Fitness Center						Pub Quiz O'Gills Pub				Club 18*21 - Social Cove Cafe											
VIBE 14-17 YEARS OLD							Coffee Break				Dream Now! Sea How! - Theatrical				Sun Deck Fun							
EDGE 11-14 YEARS OLD	Open House				Checkers Challenge				Four Square				Animation Cells				Chillin' in the Edge					
OCEANEER LAB 3-12 YEARS OLD	Super Sloppy Science - Eggsperiments						GAGA Ball				Craft Corner											
							Human Bingo				Magic Show											
OCEANEER CLUB 3-12 YEARS OLD	Open House								Journey to Neverland				Make Your Own Puppet				Youth Lunch					
	Aloha Luau														Parachute Games				Matinee Movie			

Afternoon	1:45	2:00	2:15	2:30	2:45	3:00	3:15	3:30	3:45	4:00	4:15	4:30	4:45	5:00	5:15	5:30	5:45	6:00	6:15	6:30	6:45			
FUNNEL VISION	Up (PG) Funnel Vision							Disney Channel on Deck Funnel Vision				The Emperor's New Groove (G) Funnel Vision												
MOVIES	Frankenweenie (PG) - with Open Captioning Buena Vista Theatre						Brave (PG) Buena Vista Theatre				Frankenweenie (PG) DOLBY 3D Buena Vista Theatre													
CHARACTER	Disney Friends Lobby Atrium				Mickey Dk 4, Mid		Dopey Dk 4, Mid				Buzz Lobby Atrium (H)		Aurora Dk 4, Mid		Phineas & Ferb Lobby Atrium (V)		Ariel Lobby Atrium (P)							
FUN FOR ALL AGES	Board Games Available in O'Gills Pub						Disney Vacation Club Group Preview The Tube				Live Music with The Switch Lobby Atrium				 Walt Disney Theatre									
	Family Crafts - Paper Plane Making La Piazza				 Deck Stage, Deck 11, Midship				Playhouse D Lounge D Lounge				Xbox® Kinect™ - Wipeout Challenge O'Gills Pub											
ADULTS	Books and Magazines Available in Cove Cafe						50 Movie Quotes Trivia O'Gills Pub				Club 18*21 Arr-Cade Social Arr-Cade				Pub Quiz O'Gills Pub									
							Pathway to Yoga Senses Fitness Center				Live Guitar with Carrie Stone Deck 12, Forward				Piano Requests with Tim Adthead La Piazza									
VIBE 14-17 YEARS OLD	Animation Cells				Smoothie Hour				Dive into DJ'ing				Disney Animation: Creating a Character				Anyone Can Cook: Cupcakes							
EDGE 11-14 YEARS OLD	Chillin' in the Edge				Anyone Can Cook: Pizza				Pizza Party				GAGA Ball				Ninja				Disney Sing It			
OCEANEER LAB 3-12 YEARS OLD	Open House				Xbox® Kinect™				Detective School				Marshmallow Olympics				Wii Challenge							
					Craft Madness				Bingo				Magic Playfloor				Parachute Games							
OCEANEER CLUB 3-12 YEARS OLD	Matinee Movie				Once Upon a Time				Puzzle Playtime with Mickey & Friends				Youth Dinner				Connect Four Challenge							
	Disney Animation: Creating a Character				Memory Wall				Monster's Game Galore								Picture This							
OUT AND ABOUT	Basketball Challenge Goofy's Sports Deck																							

Evening	7:00	7:15	7:30	7:45	8:00	8:15	8:30	8:45	9:00	9:15	9:30	9:45	10:00	10:15	10:30	10:45	11:00	11:15	11:30	11:45	12:00
FUNNEL VISION	Bolt (PG) Funnel Vision										The Game Plan (PG) Funnel Vision										
MOVIES	Frankenweenie (PG) DOLBY 3D Buena Vista Theatre										The Avengers (PG-13) DOLBY 3D Buena Vista Theatre										
CHARACTER	Belle Lobby Atrium (P)		Mickey Dk 4, Mid		Woody Lobby Atrium (H)		Woody Lobby Atrium (H)				Phineas & Ferb Lobby Atrium (V)		Goofy Dk 4, Mid								
FUN FOR ALL AGES	Bingo Pre Sales		Mega Raffle Jackpot Bingo D Lounge				 Walt Disney Theatre				Disney Trivia D Lounge		 D Lounge		Family Superstar Karaoke D Lounge		Viva Fiesta D Lounge				
	Cabaret: Levent The Tube - Magic				Live Music with The Switch Lobby Atrium						Live Music with The Switch Lobby Atrium										
	Officer Pin Trading Preludes																				
ADULTS	NCAA Basketball O'Gills Pub				Pub Quiz O'Gills Pub				Live Music La Piazza		Pop! The Tube		80's Music Challenge The Tube		Viva Europa The Tube		Going Underground with Guest DJ Tim Martell The Tube				
	Women Who Rock with Carrie Stone O'Gills Pub								Club 18*21 Mixer O'Gills Pub		Whiskey Tasting (21+) Meridian (Nom.Fee Pre Book)										
VIBE 14-17 YEARS OLD	ESPN Dream Team Draft Day - Football				Chillin' in Vibe				Pump It Up				Mad Gab				Gender Wars				
EDGE 11-14 YEARS OLD	Elephant Soccer		That's Hilarious		Magic Show				Photo Hunt				Picture This		Gender Wars		GAGA Ball				
OCEANEER LAB 3-12 YEARS OLD	Friendship Bracelets		Charades				Stop The Boat				Get the Hook				Cartoon Corner						
	Anyone Can Cook				Piston Cup Challenge				Games Galore				4 Corners								
OCEANEER CLUB 3-12 YEARS OLD	Create A Picture Frame		Bingo		Dance Party		Camp Rocking Out!		Cartoon Corner												
	Magic Playfloor				Coloring Corner																

Symbol for activities that will be repeated during the cruise  
 Youth Activities Open House  
 Fold along the dotted lines and take me with you so you don't miss any of the fun!  
 IN THE SPOOKY SERIES  
 MOVE IT SERIES  
 WASH & DRYER WORK  
 CLUBS & PARTIES  
 MIND UP SERIES  
 GREAT & POWER WORK  
 CLUBS & PARTIES  
 MIND UP SERIES  
 WASH & DRYER WORK

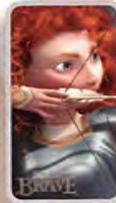


# BUENA VISTA THEATRE

CC - Open Captioning

DOLBY 3D

DOLBY 3D



1:45 p.m.  
Run Time:  
1 hr 24 min  
Rating: PG

3:45 p.m.  
Run Time:  
1 hr 41 min  
Rating: PG

5:45 & 8:15 p.m.  
Run Time:  
1 hr 24 min  
Rating: PG

10:30 p.m.  
Run Time:  
2 hr 22 min  
Rating: PG-13

## Character Appearances

### MICKEY MOUSE

Deck 4, Balcony  
9:15 a.m., 3:00 p.m.  
3:30 p.m. & 7:45 p.m.  
Lobby Atrium (P) - 10:00 p.m.

### GOOFY

Goofy's Sports Deck - 10:00 a.m.  
Deck 4, Balcony - 10:00 p.m.

### TINKER BELL

Lobby Atrium (V)  
10:30 a.m. & 11:30 a.m.

### MINNIE

Deck 4, Balcony  
10:30 a.m. & 11:30 a.m.

### DAISY DUCK

Deck 4, Balcony - 11:00 a.m.  
Lobby Atrium (P) - 4:45 p.m.

### DISNEY FRIENDS

Lobby Atrium - 3:00 p.m.

### DOPEY

Deck 4, Balcony - 4:45 p.m.

### BUZZ LIGHTYEAR

Lobby Atrium (H)  
5:00 p.m., 7:30 p.m. & 10:00 p.m.

### PRINCESS AURORA

Deck 4, Balcony - 5:15 p.m.

### DONALD DUCK

Lobby Atrium (P) - 5:15 p.m.  
Deck 4, Balcony - 9:30 p.m.

### PHINEAS & FERB

Lobby Atrium (V)  
5:30 p.m., 7:45 p.m. & 9:45 p.m.

### WOODY & JESSIE

Lobby Atrium (H)  
5:30 p.m., 8:00 p.m. & 9:30 p.m.

### PINOCCHIO

Deck 4, Balcony - 5:45 p.m.

### ARIEL

Lobby Atrium (P) - 5:45 p.m.

### MINNIE MOUSE

Deck 4, Balcony - 7:15 p.m.  
Lobby Atrium (P) - 9:30 p.m.

### BELLE

Lobby Atrium (P) - 7:15 p.m.

### PRINCESS TIANA

Lobby Atrium (P) - 8:00 p.m.

### ALADDIN & GENIE

Preludes - 9:30 p.m.

(H) Hallway - (S) Starboard Side - (P) Port Side - (V) Vestibule

For details of daily Disney character appearances, refer to the character line in your Navigator Grid or the digital character board in the Lobby Atrium.

## YOUTH ACTIVITIES THEMED EXPERIENCES

**CLUBHOUSE SERIES** focuses on movement and features content which appeals to younger children.

**STORYBOOK SERIES** is designed with a strong connection to the Disney classic stories.

**JUMP UP! SERIES** includes large ground games & movement-oriented activities.

**CREATE & INVENT SERIES** will have a tactile focus allowing children to create and admire their work.

**IN THE SPOTLIGHT SERIES** focuses on children's stage presence with lots of activities and enthusiasm.

**SOLVE IT! SERIES** are less active, but will challenge children with problem/solutions-based activities.

### YOUTH ACTIVITIES OPEN HOUSE

A non-secured program with activities for families, adults and children of all ages to enjoy together.

## SHIP DIRECTORY

### YOUTH ACTIVITIES

DISNEY'S OCEANEER CLUB	DECK 5, MID	9:00 AM - 11:00 PM
DISNEY'S OCEANEER LAB	DECK 5, MID	9:00 AM - 12:00 MID
EDGE	DECK 13, MID	10:00 AM - 1:00 AM
VIBE	DECK 4, FWD	10:00 AM - 2:00 AM
IT'S A SMALL WORLD NURSERY	DECK 5, MID	9:00 AM - 11:00 PM

### RECREATION

AQUADUCK	DECK 12, MID	9:00 AM - 10:00 PM
AQUALAB	DECK 12, AFT	10:00 AM - 6:00 PM
DONALD'S POOL	DECK 11, MID	6:00 AM - 12:00 MID
GOLF/SPORTS SIMULATORS	DECK 13, AFT	9:00 AM - 6:00 PM
GOOFY GOLF	DECK 13, AFT	8:00 AM - 10:00 PM
GOOFY'S SPORTS DECK	DECK 13, AFT	8:00 AM - 6:00 PM
MICKEY'S POOL	DECK 11, MID	6:00 AM - 11:00 PM
MICKEY'S SLIDE	DECK 11, MID	9:00 AM - 6:00 PM
MIDSHIP DETECTIVE AGENCY	DECK 2 & 5, MID	9:00 AM - 10:00 PM
NEMO'S REEF	DECK 11, MID	9:00 AM - 7:00 PM
PORT ADVENTURES DESK	DECK 5, MID	9:00 AM - 1:00 PM 7:00 PM - 8:30 PM
QUIET COVE POOL	DECK 11, FWD	6:00 AM - 12:00 MID
SATELLITE FALLS	DECK 13, FWD	6:00 AM - 6:00 PM
SENSES FITNESS CENTER	DECK 11, FWD	6:30 AM - 10:00 PM

### GENERAL INFORMATION

ARR-CADE	DECK 11, AFT	24 HOURS
ADVENTURES BY DISNEY	DECK 4, MID	9:00 AM - 12:00 PM
DISNEY VACATION CLUB	DECK 4, MID	5:30 PM - 10:00 PM
FUTURE CRUISE SALES DESK	DECK 4, MID	9:00 AM - 10:00 AM 7:30 PM - 10:00 PM
GUEST SERVICES	DECK 3, MID	24 HOURS
MEDICAL HEALTH CENTER	DECK 1, FWD	9:30 AM - 11:00 AM 4:30 PM - 7:00 PM
PORT & SHOPPING DESK	DECK 4, MID	7:30 PM - 8:30 PM
PRELUDES	DECK 3, FWD	5:45 PM - 6:30 PM 8:00 PM - 8:45 PM
SENSES SPA AND SALON	DECK 11, FWD	8:00 AM - 10:00 PM
SHUTTERS PHOTO GALLERY	DECK 4, MID	10:00 AM - 12:00 PM 5:00 PM - 10:30 PM
SHUTTERS DIGITAL	DECK 4, MID	24 HOURS

### SHOPPING

BIBBIDI BOBBIDI BOUTIQUE	DECK 5, MID	9:00 AM - 9:00 PM
MICKEY'S MAINSAIL	DECK 3, FWD	6:30 PM - 11:00 PM
QUACKS	DECK 11, MID	
SEA TREASURES	DECK 3, FWD	6:30 PM - 11:00 PM
VISTA GALLERY	DECK 4, MID	7:00 PM - 10:00 PM
WHITE CAPS	DECK 3, FWD	6:30 PM - 11:00 PM
WHOZITS & WHATZITS	DECK 11, MID	

## DINNER MENU

Animator's Palate: Prince & Princess  
Enchanted Garden: Prince & Princess  
Royal Court: Prince & Princess  
Dining Times: 5:45 p.m. & 8:15 p.m.

## DRINK OF THE DAY

Key Lime Margarita (Alcoholic)  
Cranberry No-Jito (Non Alcoholic)

## WEATHER FORECAST

Tuesday: Partly Cloudy  
High: 81°F/27°C  
Wednesday: Partly Cloudy  
High: 77°F/25°C

Evening Attire: Cruise Casual

## DINING & LOUNGES

### BREAKFAST

CABANAS CONTINENTAL	DECK 11, AFT	6:30 AM - 7:00 AM
CABANAS	DECK 11, AFT	7:00 AM - 11:30 AM
ROYAL COURT	DECK 3, MID	8:00 AM - 9:30 AM

### LUNCH

CABANAS	DECK 11, AFT	11:30 AM - 2:15 PM
FILLMORE'S FAVORITES	DECK 11, MID	10:30 AM - 6:00 PM
LUIGI'S PIZZA	DECK 11, MID	10:30 AM - 6:00 PM
ROYAL COURT	DECK 3, MID	12:00 PM - 1:30 PM
TOW MATER'S GRILL	DECK 11, MID	10:30 AM - 11:00 PM

### DINNER

ANIMATOR'S PALATE	DECK 3, AFT	5:45 PM & 8:15 PM
ENCHANTED GARDEN	DECK 2, MID	5:45 PM & 8:15 PM
ROYAL COURT	DECK 3, MID	5:45 PM & 8:15 PM
CABANAS TABLE SERVICE	DECK 11, AFT	6:30 PM - 8:30 PM
PALO (18+) (RESERVATIONS REQ. & NON-FEE APPLIES)	DECK 12, AFT	6:00 PM - 8:30 PM
REMY (18+) (RESERVATIONS REQ. & NON-FEE APPLIES)	DECK 12, AFT	6:00 PM - 8:30 PM

### LATE NIGHT SNACKS

LA PIAZZA (18+)	DECK 4, AFT	10:45 PM - 11:45 PM
LUIGI'S PIZZA	DECK 11, MID	9:30 PM - 12:30 AM

### ADDED FEATURES

BEVERAGE STATION	DECK 11, MID	24 HOURS
EYE SCREAM	DECK 11, MID	11:00 AM - 11:00 PM
ROOM SERVICE	DIAL 0	24 HOURS

### ENTERTAINMENT - LOUNGES - BARS

Adults must be 21 and older to consume alcoholic beverages.

BON VOYAGE	DECK 3, MID	10:30 AM - 11:00 PM
COVE BAR (18+)	DECK 11, FWD	10:00 AM - 11:00 PM
COVE CAFE (18+)	DECK 11, FWD	7:00 AM - 12:00 MID
CURRENTS (18+)	DECK 13, FWD	10:00 AM - 11:00 PM
D LOUNGE	DECK 4, MID	SHOWTIMES
FROZONE TREATS	DECK 11, MID	10:00 AM - 10:00 PM
LA PIAZZA	DECK 4, AFT	4:30 PM - 12:00 MID
MERIDIAN (18+)	DECK 12, AFT	5:00 PM - 12:00 MID
O'GILLS PUB	DECK 4, AFT	4:00 PM - 12:00 MID
OQH LA LA (18+)	DECK 4, AFT	5:00 PM - 12:00 MID
OUTLOOK	DECK 14, MID	SUNSET TIMES
SKYLINE (18+)	DECK 4, AFT	5:00 PM - 12:00 MID
THE TUBE (18+)	DECK 4, AFT	10:00 PM - 2:00 AM
VISTA CAFE	DECK 4, MID	7:30 AM - 10:00 PM
WAVES	DECK 12, AFT	10:00 AM - 6:30 PM

Consumers who order raw or partially cooked, ready-to-eat food of animal origin, are hereby informed that the food is not sufficiently cooked to ensure its safety.

All Ashore: Approx. 9:00 a.m.  
All Aboard: 5:30 p.m.

### IMPORTANT INFORMATION

Please check your Port Adventure tour tickets for meeting times and locations. Visit the Port Adventures Deck 5, Midship, for any questions.

### SHIP'S AGENT IN COSTA MAYA - IMPORTANT NUMBERS

Sr. Marco Souza  
Carmichel, Coordinador General,  
Aconsur, Mahahual, Q. Roo, México  
Tel: 52 983 834 5674 or 521 9837005253

Fire/Security: 7-3001  
Medical Emergency: 7-3000  
Health Center: 7-1923