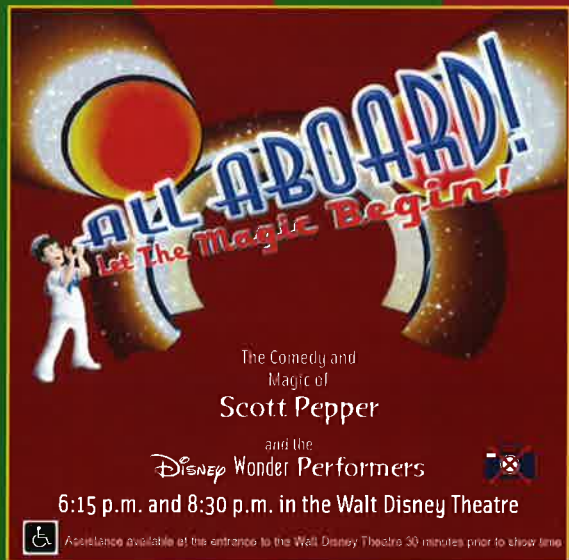


# Disney WONDER

## PERSONAL NAVIGATOR

MIAMI: SUNDAY, DECEMBER 23, 2012

Sunrise: 7:04 a.m. Sunset: 5:36 p.m. Evening Attire: Cruise Casual  
All Aboard: 3:45 p.m. Port Departure: 5:00 p.m.



### UPON ARRIVAL

#### • YOUR STATEROOM AND LUGGAGE

Staterooms will be ready at 1:30 p.m. To allow stateroom hosts to prepare your room, please do not remove the blue stanchion straps. Stateroom hosts will deliver luggage throughout the day until 5:30pm.

#### • STATEROOM SAFE

Each stateroom is equipped with a secured storage safe. Instructions for use are located on the safe.

#### • TO CHANGE DINING ASSIGNMENT

Requests for different seating times will be taken today:  
> 12:00 noon - 3:30 p.m., WaveBands, Deck 3, Forward.

#### • PALO DINING RESERVATIONS:

Are required and will be taken on a first come basis today at:  
> 12:00 noon - 3:30 p.m., WaveBands, Deck 3, Forward.  
> 3:30 p.m. - 5:00 p.m., Leave a voice mail at 7-6843.

#### • DINNER

5:45 p.m. - First Seating; 8:15 p.m. - Second Seating

Please check your dining tickets for details of your dining rotation, and bring them to your specific dining location. There is no need to wait in line prior to dinner. Dining Rooms open at designated seating times and your table is reserved each night of your cruise.

### DON'T MISS...

#### WALKING SHIP TOUR

2:00 and 2:30 p.m., meet at Deck 10, Forward Elevators  
Enjoy the beauty of the Disney Wonder with your Cruise Staff in this guided tour of the ship.

#### KING TRITON'S TREE LIGHTING DECREE

7:30 p.m., Lobby Atrium

Join the Royal Court and some of your Disney friends for this maritime tradition as we light our Christmas Tree.

#### MICKEY MANIA

7:45 p.m., Studio Sea

Put your family's Disney knowledge to the ultimate test, or play along from our live studio audience.

#### WONDER QUEST

10:45 p.m., WaveBands (Guest 18 and Older)

Join your Club Host, Simon, for the wildest scavenger hunt on the high seas.



## ADVENTURES AWAY

Earn your status as V.I.P. sailors! Join your Cruise Director Christiaan, your Disney pals, and your Cruise Staff as we officially begin your "Adventures Away."

4:30 p.m.

Goofy's Pool Stage



Celebrate your  
Disney Cruise  
...one photo at a time.

### Today ONLY! Digital Camera Blowout Sale

Free memory card and case with a purchase of selected cameras.  
Shutters, Deck 4, Aft 6:00-11:00 p.m.



Explore and more with our carefully selected Port Adventures. Pass by the Port Adventures Desk, Deck 3 Midship to find out more.

### DINNER MENU

Animator's Palate: Show Dinner  
Parrot Cay: Island Dinner  
Lumi re's: French Dinner

### DRINK OF THE DAY

Paradise Punch (Alcoholic)  
Espresso Chiller (Non Alcoholic)

### WEATHER FORECAST

Friday: Partly Cloudy  
High: 71 F/22 C

### IMPORTANT NUMBERS

Fire / Security	7-3001
Medical EMERGENCY	7-3000
Health Center	7-1923



# SHIP DIRECTORY

Animator's Palate	Deck 4, Aft
Buena Vista Theatre	Deck 5, Aft
Cove Cafe	Deck 9, Midship
Disney Vacation Club Desk	Deck 4, Midship
Diversions	Deck 3, Forward
Edge (Tween Club)	Deck 2, Midship
Flounder's Reef Nursery	Deck 5, Aft
Funnel Vision	Deck 9, Midship
Future Cruise Sales Desk	Deck 4, Midship
Goofy's Galley	Deck 9, Aft
Goofy's Pool	Deck 9, Midship
Guest Services	Deck 3, Midship
Hair Braiding Stand	Deck 9, Midship
Health Center	Deck 1, Forward
Lobby Atrium	Deck 3, Midship
Tritons	Deck 3, Midship
Mickey's Mates	Deck 4, Midship
Mickey's Pool and Slide	Deck 9, Aft
Oceaner Club	Deck 5, Midship
Oceaner Lab	Deck 5, Midship
Outlook Cafe	Deck 10, Forward
Palo	Deck 10, Aft

Parrot Cay	Deck 3, Aft
Pluto's Dog House	Deck 9, Aft
Pinocchio's Pizzeria	Deck 9, Midship
Port Adventures Desk	Deck 3, Midship
Port Shopping Desk	Deck 3, Midship
Preludes	Deck 4, Forward
Promenade Lounge	Deck 3, Aft
Quarter Masters	Deck 9, Midship
Quiet Cove Pool	Deck 9, Forward
WaveBands	Deck 3, Forward
Cadillac Lounge	Deck 3, Forward
Shutters Photo Gallery	Deck 4, Aft
Signals	Deck 9, Forward
Studio Sea	Deck 4, Midship
Beach Blanket Buffet	Deck 9, Aft
Treasure Ketch	Deck 4, Midship
Radar Trap (Duty-Free)	Deck 3, Forward
Vibe	Deck 11, Midship
Vista Spa and Fitness Center	Deck 9, Forward
Vista Gallery	Deck 4, Midship
Vista Spa Salon	Deck 9, Forward
Walt Disney Theatre	Deck 4, Forward
Wide World of Sports Deck	Deck 10, Forward

12:00	12:15	12:30	12:45	1:00	1:15	1:30
SPECIAL	Welcome Aboard!					
CHARACTER	For detailed Character appearances, please dial 7-PALS or refer to the information board in the Lobby Atrium.					
MOVIES						
FAMILY	NFL: Bengals vs. Steelers Diversions					
FAMILY	Open House Oceaner Club and Oceaner Lab					
FAMILY						
ADULTS	Welcome Aboard!					
ADULTS	Vista Spa Open House and Raffle Drawing <11:30 a.m. Vista Spa and Salon					
Teens		Open House				
Edge		Open House				
Oceaner Club		Open House and Registration				
Oceaner Lab		Open House and Registration				

	1:45	2:00	2:15	2:30	2:45	3:00	3:15	3:30	3:45	4:00	4:15	4:30	4:45	5:00	5:15	5:30	5:45	6:00	6:15	6:30	6:45									
SPECIAL	Walking Ship Tour Meet Deck 10 Forward (Tours start at 2:00 and 2:30 p.m.)							All ship services will be suspended during this time for the mandatory Boat Drill scheduled for 4:00 p.m. along Deck 4.  Please refer to the posted drill instructions prior to heading to Deck 4.								Movie: 101 Dalmations (G) Funnel Vision 7:28 p.m.														
CHARACTER	For detailed Character appearances, please dial 7-PALS or refer to the information board in the Lobby Atrium.															Adventures Away Goofy's Pool Stage				Mickey Lobby										
MOVIES																The Odd Life of Timothy Green (PG) Buena Vista Theatre														
FAMILY	Poolside Jams with DJ Wendell Goofy's Pool Stage																			Pre-Dinner Music with Carlos and Maria Promenade Lounge				Showtime: All Aboard: Let The Magic Begin Walt Disney Theatre						
FAMILY	Open House and Registration Oceaner Club and Oceaner Lab															Adventures Away Goofy's Pool Stage														
FAMILY	NFL: Bengals vs. Steelers Diversions																			Balasz at the Keys Lobby Atrium										
ADULTS																				Circuit Session Vista Spa										
ADULTS	Vista Spa Open House 11:30 a.m. Vista Spa, Salon. Spa Raffle at 3:15 p.m.																			NFL: Giants vs. Ravens Diversions 7:30 p.m.										
Vibe	YA Open House																						YA Open House							
Edge	YA Open House																						YA Open House							
Oceaner Lab	YA Open House and Registration															Oceaner Club and Lab open for secure programming at 6:00 p.m.							YA Open House and Registration				Parachute Games		Memory Wall	
Oceaner Club	YA Open House and Registration																						YA Open House and Registration				Ice Breakers			

	7:00	7:15	7:30	7:45	8:00	8:15	8:30	8:45	9:00	9:15	9:30	9:45	10:00	10:15	10:30	10:45	11:00	11:15	11:30	11:45	12:00				
SPECIAL			Tree Lighting Lobby Atrium				Movie: Tangled (G) Funnel Vision						Movie: The Sorcerer's Apprentice (PG) Funnel Vision												
CHARACTER											Goofy Lobby														
MOVIES					The Odd Life of Timothy Green (PG) Buena Vista Theatre																				
FAMILY			Pin Trading 8:15 p.m. Preludes		Family Dance with SuperFi WaveBands		Showtime: All Aboard: Let The Magic Begin Walt Disney Theatre						Disney Channel Dance Party Studio Sea		Superstar Karaoke Studio Sea										
FAMILY				Mickey Mania Studio Sea																					
FAMILY				Latin sounds with Carlos & Maria Promenade Lounge													Easy Listening with Carlos and Maria Promenade Lounge				Late Night with Carlos & Maria Promenade Lounge				
ADULTS						NFL: 49ers vs. Seahawks Diversions							11:15 p.m.					Retro Hits with SuperFi WaveBands		Wonder Quest WaveBands		Party Time with SuperFi WaveBands		DJ Wendell WaveBands	
ADULTS			Music and Martini's Cadillac Lounge						Laurence at the Keys Cadillac Lounge					College Club Social Diversions		Moments in Time Cadillac Lounge					Late Night Piano Cadillac Lounge				
Vibe	Teens Only						Trivial Pursuit						Ice Breakers				The Download		Make Your Profile/ Chillin' in Vibe til 1 a.m.						
Edge	Ice Breakers						Edge Profiles and Meet your Counselors						The 411		Explore The Edge										
Oceaner Lab	Memory Wall	Welcome Party		🧩 Games Galore			Picture Frame Crafts					Block Building		🧩 Playdough Fun		Movie Time									
Oceaner Club	Meet Your Counselors			Welcome Party		🧩 Gaga Ball			Make Your Own Door Sign				Disney Scene It			Holiday Art Time			Chillin' in the Lab						

# YOUTH ACTIVITIES

## HOURS OF OPERATION

			PHONE
Flounder's Reef Nursery	5:30 p.m. - 11:00 p.m.	7-18500	
Oceaneer Club	Open House	12:30 p.m. - 6:00 p.m.	7-1440
	Secured Program	6:00 p.m. - 12:00 a.m.	7-1440
Oceaneer Lab	Open House	12:30 p.m. - 6:00 p.m.	7-1445
	Secured Program	6:00 p.m. - 12:00 a.m.	7-1445
Edge Vibe	12:30 p.m. - 12:00 a.m.	7-5810	
	12:30 p.m. - 1:00 a.m.	7-1456	



## REGISTRATION FOR 3-12 YEAR OLDS

Meet the Youth Activities Team in the Oceaneer Lab and Oceaneer Club, complete your registration & learn all about the Themed Experiences this cruise!

### YOUTH ACTIVITIES OPEN HOUSE

A non secured program with activities for families, adults and children of all ages to enjoy together.



**CLUBHOUSE SERIES** - The Clubhouse Themed Experiences focus on movement and feature content which appeals to younger children. Recommended 7 yrs & younger.



**STORYBOOK SERIES** - The Storybook Series Themed Experiences are designed with a strong connection to the Disney classic stories.



**JUMP UP! SERIES** - The Let's Move! Themed Experiences will include large ground games & movement-oriented activities.



**CREATE & INVENT SERIES** - The Create & Invent Themed Experiences will have a tactile focus allowing children to create and admire their work.



**IN THE SPOTLIGHT SERIES** - The In The Spotlight Themed Experiences focus on children's stage presence with lots of activities and enthusiasm. Recommended 7 yrs & older.



**SOLVE IT! SERIES** - The Solve It! Themed Experiences are less active, but will challenge children with problem/solutions-based activities. Recommended 7 yrs & older.



**OUT AND ABOUT SERIES** - Set outside the designated Youth Activity spaces, The Kids Out and About Themed Experiences provides the opportunity for families to play together. Recommended 8 yrs and older.

## YOUTH ACTIVITIES OPEN HOUSE

Open House is an opportunity for all to come and participate in a variety of exciting activities and free time in the Oceaneer Club and Lab throughout the cruise. During these times secured programming will still be offered in the other venue for those looking to check their children into care.

## DINE & PLAY

A nightly convenience for families dining at 8:15 p.m., our Youth Activities Counselors will be available at 9:15 p.m. at the entrance of Triton's, Parrot Cay and Animator's Palate dining rooms to bring registered children to join the fun in the Oceaneer Club and Oceaneer Lab.

## EDGE (11- 14 YEAR OLDS)

Deck 2 Midship (7-5810)

Edge is an interactive play space designed to meet the needs of all our Tweens on board. It's design is comfortable and cool, where kids ages 11-14 years can come to play computer games and consoles, meet new friends and participate in fun events and activities, or just hang out

10:00 P.M. EDGE 411

Come and meet your counselors and fellow Tweens as we get to know each other and what there is for you to do all week long in Edge.

## VIBE (14-17 YEAR OLDS)

Deck 11 Midship (7-1456)

10:30 P.M. THE DOWNLOAD

Come up to Vibe and help plan all the fun activities you will be doing this cruise with your new friends!



# FUN FOR THE WHOLE FAMILY

## TALENT SHOW SIGN UP

Let your family take center stage and strut their stuff. Everybody has a talent — it's time to show off yours! Pre-register at the Port Adventures Desk.

## GINGERBREAD HOUSE REGISTRATIONS

Port Adventures Desk, Deck 3, Midship

Register your family of up to six people for a ticket to build a gingerbread house at a scheduled session. *Limited tickets available.*

## WALKING SHIP TOUR

2:00 and 2:30 p.m. Deck 10, Forward Elevators

Enjoy the beauty of the Disney Wonder® with your Cruise Staff in this guided tour.

## ADVENTURES AWAY

4:30 p.m. Deck 9, Goofy's Pool Stage

Earn your status as VIP sailors at this high-energy celebration. Join your Cruise Director, Christiaan, your Cruise Staff and the Disney Characters as we kick-off the official start to your Adventures Away!

## LIVE MUSIC WITH CARLOS AND MARIA

5:15, 7:30, 9:45 and 10:45 p.m., Promenade Lounge

Our duo, Carlos and Maria, play live music for your listening and dancing pleasure.

## DUCKY WILLIAMS SKETCH SESSIONS


6:00 p.m. Radar Trap

Register for an exclusive one-on-one sketch session with Ducky Williams, Senior Character Illustrator with the Walt Disney Company. *Limited spaces available.*

## SUPERSTAR KARAOKE

10:15 p.m. Studio Sea

Bring the entire family, grab the mic and sing along to your favorite song.



### CHARACTER APPEARANCES

Check here each day for Character appearances. For detailed Character appearance information, please dial 7-PALS or see the Character Information Board in the Lobby Atrium. Meet-and-Greets will be advertised for the length of time the line will be open. To avoid disappointment, please meet at start time of appearances.

**ADVENTURES AWAY:** Join some of your favorite Disney Characters today as they celebrate the start of our journey at Adventures Away at 4:30 p.m., Goofy's Pool Stage, Deck 9, Midship.

# ADULT EXCLUSIVE ENTERTAINMENT

## PIANO AND VOCAL FAVORITES

7:30, 9:30, 10:30 and 11:30 p.m. Cadillac Lounge

Pianist Laurence J. Blackler plays your favorite piano and vocal tunes featuring a special set themed "Moments in Time".

## SUPERFI LIVE

9:45 and 11:00 p.m. WaveBands

Join our house band for some great sounds, for all ages and genre's.

## COLLEGE CLUB SOCIAL

10:00 p.m. Diversions

Meet other 18 - 21 year olds and plan the rest of your night and cruise.

## WONDER QUEST

10:30 p.m. WaveBands

Join your Club Host, Simon, for the wildest scavenger hunt on the high seas.

## DJ WENDELL

11:45 p.m. WaveBands

Join our Resident DJ as he spins your favorite tunes until the early hours!



# MORE TO ENJOY WHILE ONBOARD



## GREAT VALUE PHOTO PACKAGES

We have photo packages to suit everyone. Come by Shutters, Deck 4 Aft, tonight to learn more and enter our one time only raffle. You could win your choice of two 8X10 photos. See you there!

## PORT & SHOPPING GUIDE

Meet your port & Shopping Guide, Maxine at her desk to find out what's ahead this voyage! Stop by her desk on Deck 3, midship tonight and receive a free gift and a special raffle ticket to win a beautiful diamond necklace! Tune in to channel 24-6 for more information.

## VISTA GALLERY

Take a walk through the Vista Gallery Deck 4, Midship to find a collection of unique Disney art. Pieces are available for purchase.

## ONBOARD AIRLINE CHECK-IN PROGRAM

Stop by Guest Services before 10:00 p.m. on Thursday to see if you are eligible for Onboard Airline Check In.



## FIND YOUR VACATION PARADISE

Visit the Disney Vacation Club Desk on Deck 4, Midship, to find out more about the best kept secret.



## JET LAG SPECIAL

Let your cruise start without sore muscles and swollen ankles. Indulge yourself with a 25 minute back massage, 15 minute foot and ankle massage and 10 min relaxing scalp massage. For only \$99.

## OPERATING HOURS

Disney Vacation Club Desk	5:00 p.m. - 8:00 p.m.	Port Adventures Desk	12:00 p.m. - 3:30 p.m.
Future Cruises Desk	7:00 p.m. - 8:15 p.m.		4:30 p.m. - 5:30 p.m.
Guest Services Desk	24 Hours		7:00 p.m. - 8:30 p.m.
Goofy's Pool	12:00 p.m. - 3:30 p.m.	Port Shopping Desk	6:30 p.m. - 8:30 p.m.
	5:30 p.m. - 12:00 a.m.	Preludes (snacks)	Open during show times
Health Center	4:30 p.m. - 7:00 p.m.	Quarter Masters	24 Hours
Mickey's Mates	6:00 p.m. - 11:00 p.m.	Quiet Cove Pool	12:00 p.m. - 3:30 p.m.
Mickey's Pool	12:00 p.m. - 3:30 p.m.		4:30 p.m. - 12:00 a.m.
	4:30 p.m. - 10:00 p.m.	Shutters	6:00 p.m. - 11:00 p.m.
Mickey's Slide	12:30 p.m. - 3:30 p.m.	Treasure Ketch	6:00 p.m. - 11:00 p.m.
	4:30 p.m. - 5:30 p.m.	Radar Trap	6:00 p.m. - 11:00 p.m.
Mickey Splash Zone	12:00 p.m. - 3:30 p.m.	Vista Gallery	7:00 p.m. - 9:30 p.m.
	4:30 p.m. - 8:00 p.m.	Vista Spa Fitness Center	12:00 p.m. - 10:00 p.m.
		Vista Spa and Salon	12:00 p.m. - 10:00 p.m.

## Dining Hours

Consumers who order raw or partially cooked, ready-to-eat food of animal origin, are hereby informed that the food is not sufficiently cooked to ensure its safety.

## LUNCH

Beach Blanket Buffet	12:00 p.m. - 3:15 p.m.
Goofy's Galley	Upon Boarding - 3:30 p.m.
Parrot Cay Buffet	Upon Boarding - 2:30 p.m.
Pinocchio's Pizzeria	Upon Boarding - 3:30 p.m.
Pluto's Dog House	Upon Boarding - 3:30 p.m.

## DINNER

Animator's Palate*	5:45 p.m. & 8:15 p.m.
Tritons*	5:45 p.m. & 8:15 p.m.
Parrot Cay*	5:45 p.m. & 8:15 p.m.
Goofy's Galley	4:15 p.m. - 7:00 p.m.
Pluto's Dog House	4:15 p.m. - 9:30 p.m.
Pinocchio's Pizzeria	4:15 p.m. - 7:00 p.m.

\* Pre-arranged seating assignments

## LATE NIGHT SNACKS

Pinocchio's Pizzeria	9:30 p.m. - 12:00 a.m.
Goofy Galley Ice Cream	7:00 p.m. - 11:00 p.m.
Promenade Lounge (Family)	11:00 p.m. - 12:00 a.m.
Diversions (Adults)	11:00 p.m. - 12:00 a.m.

## ADDED FEATURES

Beverage Station	24 hours
Room Service	24 hours

## Bar Hours

Bars are solely for adults 18 and older, except during scheduled family events. Adults must be 21 and older to consume alcoholic beverages.

## ON DECK

Cove Cafe	Upon Boarding - 12:00 a.m.
Outlook Cafe & Wine Bar	Upon Boarding- 12:00 a.m.
Pinocchio's Bar	Upon Boarding- 12:00 a.m.
Pluto's Dog House Bar	Upon Boarding - 6:00 p.m.
Signals Bar	Upon Boarding- 10:00 p.m.

## LOUNGES

Preludes	Open during show times
Promenade Lounge	Upon Boarding- 12:00 a.m.
Studio Sea	Open during events only

## ROUTE 66

(18 and older after 9:00 p.m.)

Cadillac Lounge (guests 18 and older)	5:30 p.m. - 12:00 a.m.
Diversions	Upon Boarding - 12:00 a.m.
Wavebands	Open during scheduled events

OPEN TILL 1:30 AM

Disney Cruise Line



Pre-arranged tours are designed to ensure that you see the best that our ports have to offer. Explore the two nations of St. Maarten on a land tour or take an exhilarating RIB boat ride from the Dutch to the French side. From St. Thomas you can enjoy the scenic splendor of St. John or snorkel in the beautiful waters of the U.S.V.I. Our experienced Port Adventures team will help you find the best choices for your family at the Port Adventures Desk, Deck 3, Midship.

## SHOPPING



Everyday there's something new at Mickey's Mates. Be sure to visit our shops often for daily onboard promotions. Deck 4, Forward.



Disposable cameras, sundries and sunscreen are available in Treasure Ketch, Deck 4, Forward.

## Ducky Williams

### Sketch Sessions-

Register in Radar Trap, beginning at 6:00 p.m. this evening, for an exclusive one-on-one sketch session with Ducky Williams, Senior Character Illustrator, Walt Disney Company.

Fees apply; limited spaces available.

## Exclusively onboard this cruise!

Visit Treasure Ketch and find out what our guest jeweler Martin Gottlieb has for you! Unique jewelry pieces from four different designer brands are brought exclusively during this cruise. Don't miss this opportunity!

## "Tis the Season.."

The Holiday season has come to Mickey's Mates. Choose from a wide variety of holiday assortment. From t-shirts, night gear, chocolates thru to a large range of ornaments and Holiday themed plush, there is something for everyone this holiday season. Mickey's Mates and Treasure Ketch.

## Gift wrapping station

Bring your Christmas Gifts to Preludes, Deck 4, Forward. and let us wrap them for you. This is complementary service.

*Shops will be closed in port due to local Customs regulations.*

## IMPORTANT INFORMATION

### Security Notice

All Guests (including Children) who wish to disembark or embark the ship are required to present their Key to the World card at the gangway. A photo ID is also required for those Guests who are 18 years of age or older. Guests under the age of 18 are required to have a Parent, Guardian or other responsible adult sign an authorization form at the time it is given out if they wish to go ashore unaccompanied. Authorization forms are available at the gangways and Guest Services.

### Cold and Flu Reminder

Please wash hands frequently and thoroughly, particularly before meals. Contact the Health Center by dialing 7-1923, should anyone in your party become ill.

### Corridor Quiet Hours

As a courtesy to all our Guests, please recognize quiet hallway hours from 10:00 p.m. till 8:00 a.m.

### Inclement Weather

For the safety of all Guests, outdoor events may be changed due to unforeseen weather conditions.

### Environmental Message

With Disney's commitment to the Environment please refrain from throwing anything over the Ship's side. Thank you.

### No Reserved Seats Policy

As a courtesy to all Guests we kindly advise that the saving of seats is not permitted in the Walt Disney Theatre, and the saving of the sun loungers is not permitted on Deck 9 and 10. Items left unattended will be returned to lost and found at Guest Services Deck 3 Midship.

### Smoking Policy

For the comfort of our Guests the following open deck areas on the Starboard Side are designated as Smoking areas: Deck 4 Starboard side from 6:00pm to 6:00am ONLY, Deck 9 Forward Starboard side at Quiet Cove and Deck 10 Starboard side. Smoking is prohibited in all Guest staterooms. Guests found smoking in their staterooms will be charged a \$250 stateroom recovery fee.

### Walt Disney Theatre

Theatrical performances may use artificial fog, strobe lights, pyrotechnics and other special effects. For the safety of our performers and the comfort of those around you, the use of any photography or video recording device or any electronic equipment is prohibited.

### Verandah Safety

Please do not leave any combustible materials on your balcony when not present in your stateroom for safety reasons.