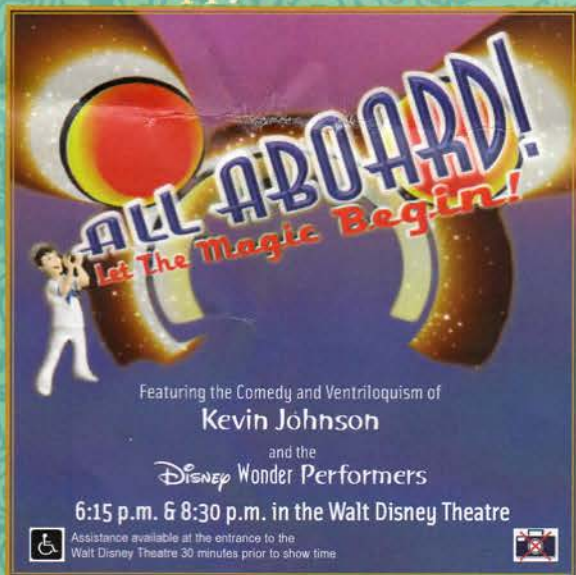


Disney Wonder

Happy Hanukkah



PERSONAL NAVIGATOR
PORT OF LOS ANGELES: SUNDAY, DECEMBER 9, 2012
 Sunrise: 6:47 a.m. Sunset: 4:45 p.m. Evening Attire: Cruise Casual
 All Aboard: 3:45 p.m. Port Departure: 5:00 p.m.
 Please remember to turn your clocks **FORWARD** before retiring
 Sunday evening or first thing Monday morning.
**PLEASE REMEMBER TO BRING YOUR KEY TO THE WORLD CARD
 TO BOAT DRILL THIS AFTERNOON.**



WELCOME ABOARD

UPON ARRIVAL...

YOUR STATEROOM & LUGGAGE

Staterooms will be ready at 2:00 p.m. Stateroom hosts will deliver luggage throughout the day until 5:30 p.m.

STATEROOMS WITH BUNK BEDS

Bunk beds are recessed into the ceiling and will be prepared during evening turnaround service by your Stateroom Host/ess.

TO CHANGE DINING ASSIGNMENT

Requests for different seating times will be taken today:

- > Upon boarding- 3:30 p.m. WaveBands
- > 3:30 - 5:00 p.m. Please dial 7-10891.

PALO DINING RESERVATIONS

Are required and will be taken on a first come basis today at:

- > Upon boarding - 3:30 p.m. WaveBands
- > 3:30 p.m. - 5:00 p.m. Please leave a voice mail at 7-6843.

DINNER

5:45 p.m. - First seating, 8:15 p.m. - Second seating
 Please check your dining tickets for details of your dining rotation, and bring them to your specific dining location. There is no need to wait in line prior to dinner. Dining Rooms open at designated seating times and your table is reserved each night of your cruise.

DON'T MISS...

ADVENTURES AWAY

4:30 p.m. Goofy's Pool Stage

Earn your status as V.I.P. sailors as your Cruise Director Christiaan, your Disney Pals, and the Cruise Staff officially begin your "Adventures Away".

MICKEY MANIA

7:45 p.m. Studio Sea

Join us for the ultimate test of your Disney knowledge as we play our live, interactive game show that's "insania"!

KING TRITON'S TREE LIGHTING DECREE

7:15 p.m. Lobby Atrium

Join the Royal Court and some of your Disney friends for this maritime tradition as we light our Christmas Tree.

WAVELENGTHS

10:30 p.m. WaveBands (Guests 18 years and older)

Come meet your Club Host Simon and DJ Wendell as we find out who is on the same "Wavelength", the men or the women!



ADVENTURES AWAY

Earn your status as V.I.P. sailors as your Cruise Director Christiaan, your Disney Pals, and the Cruise Staff officially begin your "Adventures Away".

4:30 p.m.

Goofy's Pool Stage

**SMOKING IS PROHIBITED IN ALL GUEST STATEROOMS.
 GUESTS FOUND SMOKING IN THEIR STATEROOMS WILL BE CHARGED A \$250 STATEROOM RECOVERY FEE.**

ALL SHIP SERVICES WILL BE SUSPENDED BETWEEN 3:30 P.M. AND 4:30 P.M. DUE TO THE MANDATORY BOAT DRILL.

FOR THE CONTINUED GOOD HEALTH OF ALL GUESTS PLEASE WASH HANDS FREQUENTLY AND THOROUGHLY, PARTICULARLY BEFORE MEALS. CONTACT THE HEALTH CENTER BY DIALING 7-1923 SHOULD ANYONE IN YOUR PARTY BECOME ILL.

Get The Picture!

Take home all your stateroom photos from this cruise on a CD! Terms and conditions apply. Visit Shutters on Deck 4, Aft and ask your friendly Shutter staff for more information. Due to high volume of photos and limited time, we will only be accepting the first 100 orders. Hurry! Order yours now.



*Celebrate your Disney Cruise
 ...one photo at a time.*

Waterproof Digital Cameras Available

Get ready for all kinds of water fun under the sun. Check out our waterproof cameras available on in Shutter, Deck 4, Aft. Get yours now while stocks last!

DINNER MENU

Let The Magic Begin

DRINK OF THE DAY

Californian Dream (Alcoholic)
 Espresso Chiller (Non Alcoholic)

IMPORTANT NUMBERS

Fire / Security	7-3001
Medical EMERGENCY	7-3000
Health Center	7-1923

Parrot Cay	Deck 3, Aft
Pluto's Dog House	Deck 9, Aft
Pinocchio's Pizzeria	Deck 9, Midship
Port Adventures Desk	Deck 3, Midship
Port Shopping Desk	Deck 3, Midship
Preludes	Deck 4, Forward
Promenade Lounge	Deck 3, Aft
Quarter Masters	Deck 9, Midship
Quiet Cove Pool	Deck 9, Forward
Shutters Photo Gallery	Deck 4, Aft
Signals	Deck 9, Forward
Studio Sea	Deck 4, Midship
Triton's	Deck 3, Midship
Treasure Ketch	Deck 4, Midship
Radar Trap	Deck 3, Forward
Vibe	Deck 11, Midship
Vista Gallery	Deck 4, Midship
Vista Spa and Fitness Center	Deck 9, Forward
Walt Disney Theatre	Deck 4, Forward
WaveBands	Deck 3, Forward
Wide World of Sports Deck	Deck 10, Forward

A small illustration of Minnie Mouse wearing a red sailor-style outfit with a white collar and a large red bow on her head. She is smiling and looking towards the left.

All ship services
will be suspended
during this time for the
mandatory Boat Drill
scheduled for 4:00 p.m.
along Deck 4.



HOURS OF OPERATION

		PHONE
Flounder's Reef Nursery	12:30 p.m. - 11:00 p.m.	7-18500
Oceaner Club	<i>Open House</i> 12:30 p.m. - 6:00 p.m.	7-1440
	<i>Secured Program</i> 6:00 p.m. - 12:00 a.m.	7-1440
Oceaner Lab	<i>Open House</i> 12:30 p.m. - 6:00 p.m.	7-1445
	<i>Secured Program</i> 6:00 p.m. - 12:00 a.m.	7-1445
Edge	12:30 p.m. - 12:00 a.m.	7-5810
Vibe	12:30 p.m. - 1:00 a.m.	7-1456



FLOUNDER'S REEF NURSERY

Deck 5 Midship (7-18500)

Infants and Toddlers can enjoy toys and activities at Flounder's Reef Nursery. Reservations are first come, first served so please stop by!



OCEANEER CLUB

Deck 5 Midship (7-1440)



OCEANEER LAB

Deck 5 Midship (7-1445)

REGISTRATION FOR 3-10 YEAR OLDS

Meet the Youth Activities Team in the Oceaneer Lab and Oceaneer Club, complete your registration & learn all about the Themed Experiences this cruise!



YOUTH ACTIVITIES OPEN HOUSE

A non secured program with activities for families, adults and children of all ages to enjoy together.



CLUBHOUSE SERIES - The Clubhouse Themed Experiences focus on movement and feature content which appeals to younger children. Recommended 7 yrs & younger.



STORYBOOK SERIES - The Storybook Series Themed Experiences are designed with a strong connection to the Disney classic stories.



JUMP UP! SERIES - The Let's Move! Themed Experiences will include large ground games & movement-oriented activities.



CREATE & INVENT SERIES - The Create & Invent Themed Experiences will have a tactile focus allowing children to create and admire their work.



IN THE SPOTLIGHT SERIES - The In The Spotlight Themed Experiences focus on children's stage presence with lots of activities and enthusiasm. Recommended 7 yrs & older.



SOLVE IT! SERIES - The Solve It! Themed Experiences are less active, but will challenge children with problem/solutions-based activities. Recommended 7 yrs & older.



OUT AND ABOUT SERIES - Set outside the designated Youth Activity spaces, The Kids Out and About Themed Experiences provides the opportunity for families to play together. *Recommended 8 yrs and older.*

DINE & PLAY

A convenience for families dining at 8:15 p.m., our Youth Activities Counselors will be available at 9:15 p.m. at the entrance of Triton's, Parrot Cay and Animator's Palate dining rooms to bring registered children to join the fun in the Oceaneer Club and Oceaneer Lab.



EDGE (11-13 YEAR OLDS)

Deck 2 Midship (7-5810)

Edge is an interactive play space designed to meet the needs of all our Tweens on board. It's design is comfortable and cool, where kids ages 11-13 years can come to play computer games and consoles, meet new friends and participate in fun events and activities, or simply just hang out.

10:00PM EDGE 411

Come and meet your counselors and fellow Tweens as we get to know each other and what there is for you to do all week long in Edge.

VIBE (14-17 YEAR OLDS)

Deck 11 Midship (7-1456)

10:30PM THE DOWNLOAD

Come up to Vibe and help plan all the fun activities you will be doing this cruise with your new friends! We'll use our very own Teens-only intranet database to decide how our week will go!



HANUKKAH CELEBRATION

5:00 p.m. WaveBands

We invite you to join Rabbi Michael Schulman for our Hanukkah celebration from 5:00 to 5:45 p.m. in Wavebands. Join us to celebrate the festival of light.

FUN FOR THE WHOLE FAMILY

TALENT SHOW SIGN UP

Let your family take center stage and strut their stuff. Everybody has a talent — it's time to show off yours! Register at the Port Adventures Desk.

HOLIDAY FUN

Reserve your spot for Gingerbread house making at the Port Adventures or Guest Services desks. (Limited Availability).

WALKING SHIP TOUR

2:30 p.m. Meet at Deck 10, Forward Elevators

Enjoy the beauty of the Disney Wonder® with your Cruise Staff in this guided tour.

LIVE MUSIC WITH CARLOS & MARIA

5:15, 7:30, 9:45 & 10:45 p.m. Promenade Lounge

Our duo Carlos & Maria play LIVE for your listening pleasure.

LIMITED EDITION PIN STATION

7:15 p.m. Preludes

One-of-a-kind trading pins available for purchase at our special pin station.

MICKEY MANIA

7:45 p.m. Studio Sea

Join us for the ultimate test of your Disney knowledge as we play our live, interactive game show, that's "insania"!

DISNEY CHANNEL DISCO

9:30 p.m. Studio Sea

Join DJ Wendell and your Cruise Staff as you become a dancing superstar when you and your family take to the floor and dance along to your favorite tunes.

FAMILY KARAOKE

10:45 p.m. Studio Sea

Join your Cruise Staff as we look for your family's singing superstar.

CHARACTER APPEARANCES

ADVENTURES AWAY

4:30 p.m. Deck 9, Midship.

Join Mickey and his friends at the Goofy Pool Stage for this fun and exciting show.

For daily Character appearances please check your Personal Navigator or dial 7-PALS.

(To avoid disappointment Guests are advised to arrive by the start time of our character appearances.)



ADULT EXCLUSIVE ENTERTAINMENT

PIANO AND VOCAL FAVORITES

7:30, 9:30, 10:30 & 11:30 p.m. Cadillac Lounge

Join Laurence J. Blackler in Cadillac Lounge as he plays your favorite piano hits.

SUPERFI LIVE

9:45 & 11:00 p.m. WaveBands

Join our LIVE house band, SuperFi, as they light up the dancefloor with hits from the 60's, 70's and 80's!

CLUB 18*21 SOCIAL

10:00 p.m. Diversions

Meet other 18-21 year olds to share some laughs and plan the rest of your cruise together!

WAVELENGTHS

10:30 p.m. WaveBands

Come meet your Club Host Simon and DJ Wendell as we find out who is on the same "Wavelength", the men or the women!

DJ WENDELL

11:45 p.m. WaveBands

Join our resident DJ as he plays all your favorite top 40, house and dance tracks to get your vacation started!

MORE TO ENJOY WHILE ONBOARD

VISTA GALLERY

Stroll through the Vista Art Gallery, to view a large selection of Disney Art, including Giclees on canvas and paper and selected original pieces coming during the cruise- Silent Art Auctions- your chance to own some unique pieces of artwork.



WELCOME ABOARD RAFFLE

Your embarkation photos will be available for viewing at 6:00 p.m. Visit Shutters and fill in a raffle entry for a chance to win two 8x10 photos!



ANOTHER CRUISE IS IN YOUR FUTURE

Book a future cruise today and you'll save 10%, receive up to a \$200 onboard credit, and pay a reduced deposit! Visit the Future Cruise Sales desk or call 7-2848 or tune to Channel 22.7 for more details.

SURF @ SEA

\$0.75 per minute or save money by buying blocks of time. \$55 for 100 minutes, \$100 for 250 minutes and \$150 for 500 minutes. Wireless information sheets are available at Guest Services, Deck 3, Midship. Due to the technology involved and satellite connectivity, the onboard internet service will be noticeably slower than you may be accustomed to and may at times be interrupted or unavailable.

OPERATING HOURS

Disney Vacation Club Desk	5:00 P.M. - 8:00 P.M.	Port Adventures Desk	12:00 P.M. - 3:30 P.M.
Future Cruises Desk	7:00 P.M. - 8:15 P.M.		4:30 P.M. - 5:30 P.M.
Guest Services Desk	24 HOURS		7:00 P.M. - 8:30 P.M.
Goofy's Pool	12:00 P.M. - 3:30 P.M.	Port Shopping Desk	6:30 P.M. - 8:30 P.M.
	6:00 P.M. - 12:00 A.M.	Preludes (snacks) OPEN DURING SHOW TIMES	
Health Center	4:30 P.M. - 7:00 P.M.	Quarter Masters	24 HOURS
Mickey's Mates	6:00 P.M. - 10:30 P.M.	Quiet Cove Pool	12:00 P.M. - 3:30 P.M.
Mickey's Pool	12:00 P.M. - 3:30 P.M.		4:30 P.M. - 12:00 A.M.
	4:30 P.M. - 10:00 P.M.	Shutters	6:00 P.M. - 11:00 P.M.
Mickey's Slide	12:30 P.M. - 3:30 P.M.	Treasure Ketch	6:30 P.M. - 10:30 P.M.
	4:30 P.M. - 5:30 P.M.	Radar Trap	7:00 P.M. - 10:00 P.M.
Mickey Splash Zone	12:00 P.M. - 3:30 P.M.	Vista Gallery	7:00 P.M. - 10:00 P.M.
	4:30 P.M. - 8:00 P.M.	Vista Spa Fitness Center	12:00 P.M. - 10:00 P.M.
		Vista Spa and Salon	12:00 P.M. - 10:00 P.M.

Dining Hours

Consumers who order raw or partially cooked, ready-to-eat food of animal origin, are hereby informed that the food is not sufficiently cooked to ensure its safety.

LUNCH

Beach Blanket Buffet	12:00 P.M. - 3:15 P.M.
Parrot Cay Buffet	UPON BOARDING - 2:30 P.M.
Goofy's Galley	UPON BOARDING - 3:30 P.M.
Pinocchio's Pizzeria	UPON BOARDING - 3:30 P.M.
Pluto's Dog House	UPON BOARDING - 3:30 P.M.

DINNER

Animator's Palate*	5:45 P.M. & 8:15 P.M.
Tritons*	5:45 P.M. & 8:15 P.M.
Parrot Cay*	5:45 P.M.
Goofy's Galley	4:15 P.M. - 7:00 P.M.
Pluto's Dog House	4:15 P.M. - 9:30 P.M.
Pinocchio's Pizzeria	4:15 P.M. - 7:00 P.M.

* Pre-arranged seating assignments

LATE NIGHT SNACKS

Pinocchio's Pizzeria	9:30 P.M. - 12:00 A.M.
Goofy Galley Ice Cream	7:00 P.M. - 11:00 P.M.
Promenade Lounge (Family)	11:00 P.M. - 12:00 A.M.
Diversions (Adults)	11:00 P.M. - 12:00 A.M.

ADDED FEATURES

Beverage Station	24 HOURS
Room Service	24 HOURS

Bar Hours

Bars are solely for adults 18 and older, except during scheduled family events. Adults must be 21 and older to consume alcoholic beverages.

ON DECK

Cove Cafe	12:00 P.M. - 12:00 A.M.
Outlook Cafe & Wine Bar	12:00 P.M. - 12:00 A.M.
Pinocchio's Bar	12:00 P.M. - 12:00 A.M.
Pluto's Dog House Bar	12:00 P.M. - 6:00 P.M.
Signals Bar	12:00 P.M. - 10:00 P.M.

LOUNGES

Preludes	OPEN DURING SHOW TIMES
Promenade Lounge	12:00 P.M. - 12:00 A.M.
Studio Sea	OPEN DURING EVENTS ONLY

Route 66

(18 AND OLDER AFTER 9:00 P.M.)

Cadillac Lounge (Adults 18 & Older)	5:30 P.M. - 12:00 A.M.
Diversions	12:00 P.M. - 12:00 A.M.
Wavebands	OPEN DURING SCHEDULED EVENTS

OPEN TILL 1:30 A.M.

MEET YOUR PORT & SHOPPING GUIDE MAXINE

Exotic destinations deserve extra attention. Meet Maxine at her desk to find out what's ahead this voyage! Find out about great tax & duty free shopping and much more. Stop by to receive a free gift & a special raffle ticket to win a beautiful piece of diamond jewelry!



DISNEY VACATION CLUB® GROUP PREVIEW

Want to learn more about taking magical vacations year after year? Please see a Disney Vacation Club Representative on Deck 4, midship or call 7-2805 for more information about our interactive group presentation.

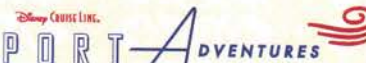


FORGOT TO BOOK ONLINE?

Book and receive any of our Signature treatments TODAY ONLY and enjoy 15 minutes complimentary bonus treatments. Visit the Vista Spa, Deck 9, Forward.

STAY CONNECTED WITH CELLULAR SERVICE

Cell phone and wireless PDA service is available in guest staterooms through most plans. Pricing varies depending upon your wireless provider and usually includes International roaming rates.



Welcome aboard and get ready for the Mexican Riviera and the fun and sun that Mexico has to offer. Cabo San Lucas is bordered by white sand beaches with clear blue water and a desert landscape. Puerto Vallarta is encircled by the tropical-forested Sierra Madre Mountains nestled on 28-mile curve of the Banderas Bay so there are plenty of options. Come on down and choose your fun with the Port Adventures team at the Port Adventures Desk, Deck 3, Midship.

SHOPPING



Deck 4, Forward



Deck 4, Forward

Provenance Gems Trunk Show

Special Events for this Cruise hosted by Donny Carvajal, Guest Jeweler. Tanzanite Jewelry unveiling and lecture tomorrow. Zultanite, an exciting gemstone which changes color. Emeralds, the Queen of Gems. An amazing selection of emerald jewelry and loose stones will be available onboard as we sail from Colombia. Available in Treasure Ketch.

Limited Edition Pin Station

Unique and Limited Edition Pins available for purchase at our special pin station, join us from 7:15pm to 8:15pm in Preludes, Deck 4, Forward.

DCL Panama Specific Merchandise

Stop by Treasure Ketch and Mickey's Mates for all your DCL Panama Specific merchandise memories. Choose from a variety of adult t-shirts, kids t-shirts, postcards and many more. Whilst supplies last! (Limited two per person, per style, per size).

Duty Free Fragrance

Find top designer fragrances in Treasure Ketch Deck 4, all available at Duty Free pricing. Choose from varieties such as Chanel, Ralph Lauren, Issey Miyake and many more.

Dooney and Bourke

Experience the Dooney & Bourke difference for yourself. See the Disney Cruise Line range of bags and purses today. From the Four Ships Collection to the Nautical Inspired Range. There is sure to be a bag that inspires you. Available in Treasure Ketch.

IMPORTANT INFORMATION

Security Notice

All Guests (including Children) who wish to disembark or embark the ship are required to present their Key to the World card at the gangway. A photo ID is also required for those Guests who are 18 years of age or older. Guests under the age of 18 are required to have a Parent, Guardian or other responsible adult sign an authorization form at the time it is given out if they wish to go ashore unaccompanied. Authorizations forms are available at the gangways and Guest Services.

Cold and Flu Reminder

Please wash hands frequently and thoroughly, particularly before meals. Contact the Health Center by dialing 7-1923, should anyone in your party become ill.

Corridor Quiet Hours

As a courtesy to all our Guests, please maintain quiet hallway hours from 10:00 p.m. till 8:00 a.m.

Inclement Weather

For the safety of all Guests, outdoor events may be changed due to unforeseen weather conditions.

Environmental Message

With Disney's commitment to the Environment, please refrain from throwing anything over the ship's side. Please note that no food or drink items may be taken off or brought onto the ship.

No Reserved Seats Policy

As a courtesy to all Guests we kindly advise that the saving of seats is not permitted in the Walt Disney Theatre, and the saving of the sun loungers is not permitted on Deck 9 and 10. Items left unattended will be returned to lost and found at Guest Services Deck 3 Midship.

Smoking

For the comfort of our guests the following areas are designated as Smoking areas: Open decks on the Starboard Side (excluding Mickey Pool area). Smoking is not permitted on Deck 4, Starboard from 6:00am to 6:00pm. Smoking is prohibited in all guest staterooms. Guests found smoking in these staterooms will be charged a \$250 stateroom recovery fee.

Internet

Due to the technology involved and satellite connectivity, the onboard internet service will be noticeably slower than you may be accustomed to and may at times be interrupted or unavailable.

Walt Disney Theatre

Theatrical performances may use artificial fog, strobe lights, pyrotechnics and other special effects. For the safety of our performers and the comfort of those around you, photography and video recording is prohibited.

Verandah Safety

Please do not leave any combustible materials on your balcony when not present in your stateroom for safety reasons.