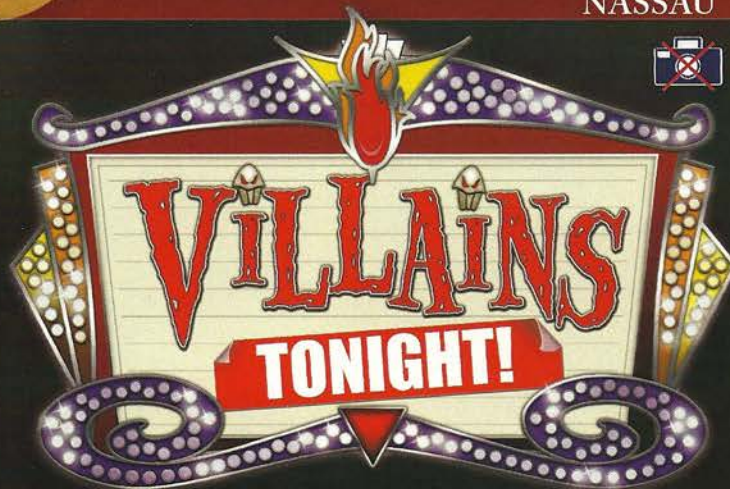
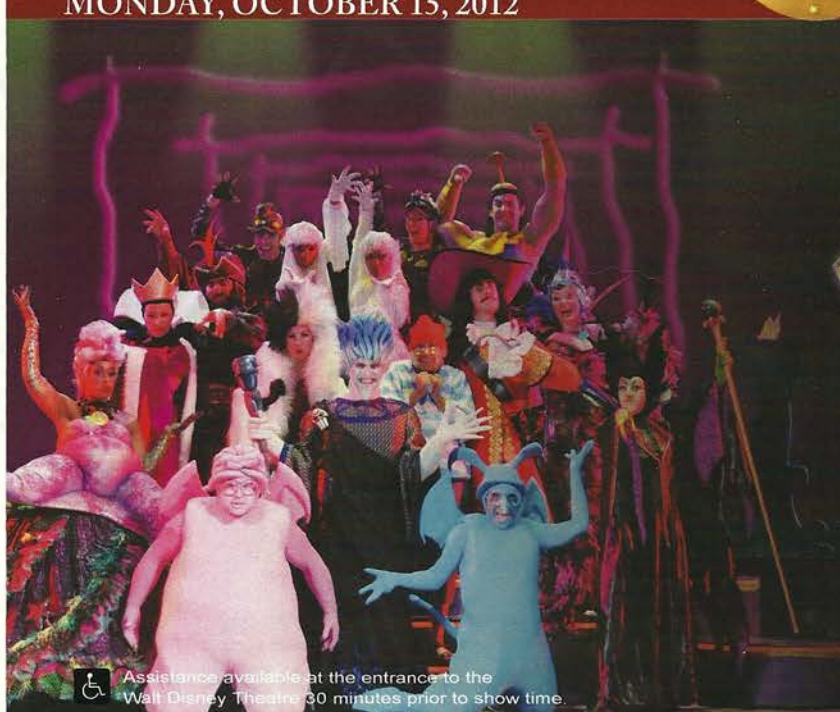


# PERSONAL NAVIGATOR


MONDAY, OCTOBER 15, 2012

Sunrise: 7:07 a.m. Sunset: 6:42 p.m.  
 Evening Attire: Optional Dress Up  
 All Ashore: 9:30 a.m.  
 All Aboard: 6:00 p.m.  
 Gangway: Deck 1, Midship, & Deck 1, Forward  
 Monday: Sunny High: 78°F/26°C  
 Tuesday: Sunny High: 78°F/26°C

NASSAU



WALT DISNEY THEATRE  
 DECKS 3 & 4, FORWARD  
 6:15 P.M. & 8:30 P.M.

 Assistance available at the entrance to the Walt Disney Theatre 30 minutes prior to show time.

## Nassau Port Information

While you will find many great experiences in Nassau, there have been reports of increased crime, including assaults and robberies involving tourists in the area. As in any large city, you'll want to take some basic precautions to make the most of your time ashore.

- Be aware of your surroundings at all times, just as you would in your normal daily activities.
- Avoid short cuts, narrow alleys or poorly lit streets. We recommend that guests only visit the downtown shopping areas and other tourist locations.
- Leave valuables in your room safe and avoid carrying large amounts of cash. Exercise caution when using ATMs. Cameras and handbags should be carried out of sight and secured to your person with a strap.
- Leave passports, air transportation tickets and other travel documents in your room safe. When going ashore, each adult is required to carry a Driver's license, copy of passport or other government-issued photo ID.
- If traveling by taxi, use only licensed taxi operators.
- In general, use the same level of precaution you would use in any tourist destination.
- Most crimes are easier to commit in dark unlit areas. You should stay out of these types of areas and consider returning to the ship before nightfall. If you stay out at night, please be extra vigilant about your personal safety.



### GAME SHOW

Bring the entire family and test your Disney knowledge in this interactive, family game show.

10:15 p.m.  
 D Lounge,  
 Deck 4, Midship

## Don't Miss:

### Making of the Dream

*Evolution*, Deck 4, Aft - 11:30 a.m. (Families)  
*Evolution* (18+), Deck 4, Aft - 2:00 p.m. (Adults)

Explore the origins of Disney Cruise Line - and the latest and greatest innovations conjured especially for the Disney Dream, in this fascinating and entertaining behind-the-scenes program.

### Disney Animation: Creating a Character

*D Lounge*, Deck 4, Midship - 2:00 p.m.

Go behind the scenes at Walt Disney Animation Studios and learn the principles that make animation work, and try your hand at creating your own easy animation demonstration in this fun and fascinating enrichment program.

### Dream Quest

*Evolution* (18+), Deck 4, Aft - 10:00 p.m.

Enjoy the adult version of the wildest and wackiest scavenger team event on the seven seas!

### Club New Year's Eve

*D Lounge*, Deck 4, Midship - 10:45 p.m.

"The party don't start till you walk in" - to Club New Year's Eve! Bring your family and help us count down to a brand new year!



Welcome to Nassau, capital of the Bahamas. It is not too late to book an amazing adventure to Blue Lagoon Island, Atlantis, or you could book a semi-submarine ride.

All Port Adventures meet onboard the ship in Nassau. Please check your tour tickets for meeting times and locations.

## DINNER MENU

Animator's Palate: Pacific Rim Cuisine  
 Enchanted Garden: Continental Market  
 Royal Palace: French Dinner

## DRINK OF THE DAY

Yellow Bird (Alcoholic)  
 Parrot Song (Non Alcoholic)

## IMPORTANT NUMBERS

Fire/Security: 7-3001  
 Medical Emergency: 7-3000  
 Health Center: 7-1923



# FAMILY ACTIVITY HIGHLIGHTS

## FAMILY CRAFTS

*D Lounge, Deck 4, Midship - 1:00 p.m.*

Create a fun souvenir with your Cruise Staff that is yours to keep.

## DISNEY VACATION CLUB® GROUP PRESENTATION

*Evolution, Deck 4, Aft - 3:00 p.m.*

Want to learn more about taking magical vacations year after year? Stop by our interactive group presentation to find out more information from a Disney Vacation Club representative.

## DISNEY DISCO

*D Lounge, Deck 4, Midship - 6:00 p.m.*

Join your Cruise Staff and dance along to some of your favorite tunes.

## FAMILY DANCE PARTY

*Evolution, Deck 4, Aft - 7:30 p.m.*

Grab your dancing shoes and hit the dance floor as DJ Marius spins the tunes.

## FAMILY SUPERSTAR KARAOKE

*D Lounge, Deck 4, Midship - 8:45 & 11:15 p.m.*

Calling all singing superstars! Join your Cruise Staff in D Lounge and sing along to your favorite song - fun for everyone.



## CLUB NEW YEAR'S EVE

*D Lounge, Deck 4, Midship - 10:45 p.m.*

"The party don't start till you walk in" - to Club New Year's Eve!

Bring your family and help us count down to a brand new year!



# ADULT ACTIVITY HIGHLIGHTS

## SENSES SPA SEMINARS

*Body Sculpt Boot Camp (Fee Applies) - Goofy's Sports Deck, 7:30 a.m.*

*Wake Up & Stretch Class - Senses Fitness Center, 8:00 a.m.*

*Group Cycling (Sign-Up Required) - Senses Fitness Center, 8:30 a.m.*

*Seminar: Burn Fat Faster - Senses Spa & Salon, 3:00 p.m.*

*Good Feet Seminar: Relieving Back Pain - Senses Fitness Center, 4:00 p.m.*

*Seminar: Acupuncture for Well Being - Senses Spa & Salon, 4:00 p.m.*

*Fab Abs - Senses Fitness Center, 5:00 p.m.*



## TASTING SEMINARS

*Mixology - Skyline, 4:00 p.m.*

*Martini Tasting - Meridian, 4:00 p.m.*

Please make reservations for tastings at Guest Services for a nominal fee.

Tasting Seminars are only for Guests 21 and older.



## MINI GOLF CHALLENGE

*Goofy's Sports Deck, Deck 13, Aft, 5:00 p.m.*

## MIXER

*Evolution, Deck 4, Aft, 10:00 p.m.*

## ART OF THE THEME SHOW TOUR

*Meet at Meridian, Deck 12, Aft - 2:45 p.m.*

A walking tour that highlights the ship's design, emphasizing Disney culture, themeing and artistry.

## NAME THAT 70'S TUNE

*687 Pub, Deck 4, Aft - 5:00 p.m.*

"At first I was afraid... I was petrified"... know this tune? If so, join your Club Host, Franky, as he tests your knowledge of the 70's classics.



## ESPN MONDAY NIGHT FOOTBALL CALL IT!

*687 Pub, Deck 4, Aft - 7:30 p.m.*

Test your Monday Night Football knowledge as you watch some of the greatest highlights of football history and then "make the call" as to what happens next!



## 8TRAX (70'S REMIX)

*FOLLOWED BY GUEST DJ AKSHEN*

*Evolution, Deck 4, Aft - 11:15 p.m.*

Join your Club Host, Franky, & the Cruise Staff for a 70's disco fever epidemic. With a special appearance by the Evolution Dancers.

# \$5,000 MEGA JACKPOT BINGO

**D Lounge,  
Deck 4, Midship  
Card Sales - 4:00 p.m.  
Game Starts - 4:15 p.m.**

Join your Cruise Staff for four cash prize games. Cover your card in 46 numbers or less, and \$5,000 could be yours. If not, we continue to play for the highest cash prize of the session!



# SENSES SPA BINGO

**D Lounge, Deck 4, Midship  
Card Sales - 7:15 p.m.  
Game Starts - 7:30 p.m.**

Four cash prizes up for grabs, plus great spa prizes to be won, including facials and massages courtesy of the Senses Spa & Salon. Also, the snowball jackpot continues to grow and could be won today!



# YOUTH ACTIVITIES HIGHLIGHTS

## DINE & PLAY

A convenience for families dining at 8:15 p.m., our Youth Activities Counselors will be available at 9:15 p.m. at the entrance of Royal Palace, Enchanted Garden and Animator's Palate dining rooms to bring registered children to join the fun in the Youth Activity areas.



**Deck 5, Midship (7-5864)** 9:00 a.m. - 1:00 a.m.

## OPEN HOUSE

8:00 - 9:00 a.m.

Your chance to see our toddler space, It's A Small World Nursery.



**Deck 5, Midship (7-1440)** 10:30 a.m. - 12:00 Mid (3 - 12 years old)

## BIG TOP FUN FEST

11:30 a.m.

It's the greatest show on Earth. Come re-discover the circus Disney style with clowns, jugglers and classic Disney cartoons.

## TOY STORY BOOT CAMP

6:15 p.m.

Ten-hut! The Green Army Men are holding a boot camp and your junior cruiser is invited to join in on the fun.



**Deck 5, Midship (7-1445)** 9:00 a.m. - 1:00 a.m. (3 - 12 years old)

## PISTON CUP CHALLENGE

11:15 a.m.

It's Dinoco time and you're part of the pit crew! Design your own race car and see if you've got what it takes to end up in the Winner's Circle!

## SUPER SLOPPY SCIENCE

8:30 p.m.

Join Professor Make-O-Mess in some of the most extreme experiments you will ever see in the world of Super Sloppy Science!



**Deck 13, Midship (7-9743)** 10:00 a.m. - 1:00 a.m. (11 - 14 years old)

## ANIMATION

3:00 p.m.

Learn simple animation techniques and then put your new skills to use by drawing some of your favorite Disney characters.

## ANYONE CAN COOK

7:30 p.m.

Create a delicious dish together. Fun for everyone!



**Entrance on Deck 4, Forward (7-9417)**  
11:00 a.m. - 2:00 a.m.  
(14 - 17 years old)

## MAGIC SHOW

10:30 p.m.

Put some magic and wonder in your Dream vacation. Say "Abracadabra!" and fun is sure to appear!

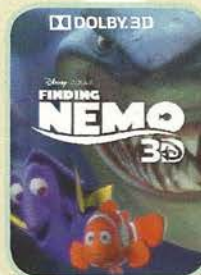
## GHOST VOYAGERS

11:30 p.m.

The ship has come upon some mysterious waters and strange things are afoot. Join a paranormal expert to help investigate the area and track down any evidence of ghostly beings on the ship.

# BUENA VISTA THEATRE

## Today's Movies



1:00 p.m.  
Run Time: 1 hrs 30 mins  
Rating: G



3:00 p.m. - 2D Version  
10:30 p.m. - **DOLBY 3D**  
Run Time: 1 hr 24 mins  
Rating: PG



5:30 p.m. & 8:30 p.m.  
Run Time: 1 hr 31 mins  
Rating: PG



Get ready for a jammin', slammin', splish splashin' good time at the new Disney Channel Poolside Jam Fest at Sea! Imagine all of your favorite Disney Channel music stars coming together for an afternoon of contests, great music and hot videos, all under the Caribbean sun!

**Deck Stage,**  
**Deck 11, Midship**  
**1:00 p.m.**



## GAME SHOW

It's time to play everyone's favorite couples game show - **Match Your Mate!**

**Evolution (18+),**  
**Deck 4, Aft**  
**10:30 p.m.**

## YOUTH ACTIVITIES OPEN HOUSE

Open House is an opportunity for all to come and participate in a variety of exciting activities and free time in the Oceaneer Club, Lab, Edge and Vibe throughout the cruise. During these times secured programming will still be offered in the other venue for those looking to check their children into care.



# MORE TO ENJOY WHILE ONBOARD



## BOOK YOUR NEXT CRUISE TODAY AND SAVE

Don't waste time, book your next cruise today. You'll save 10%, receive up to a \$200 onboard credit, and pay a reduced deposit! Tune to Channel 8 on your stateroom TV for details and visit the Future Cruise Sales Desk, Deck 4, Midship.



## DISNEY VACATION CLUB® GROUP PREVIEW

Want to learn more about taking magical vacations year after year? Please see a Disney Vacation Club representative on Deck 4, Midship, or call 7-2805 from your stateroom phone for more information about our interactive group presentation.



## NASSAU SHOPPING HIGHLIGHTS

Join Sean at his shopping desk this morning from 8:00 a.m. to 9:00 a.m. for your last chance to get your VIP shopping cards, shopping maps, as well as your shopping coupon books. These VIP cards are essential and will ensure you get the additional Disney discount. Sean will also be hosting a Diamond & Gemstone seminar in the Vista Café from 9:00 a.m. to 10:00 a.m. Any guests that would like to go ashore with Sean be sure to meet at the shopping desk, Deck 4, Midship at 10:00 a.m.



**SENSES**  
Spa & Salon

## PAMPER PACKAGE

50 minute full body Swedish massage, foot and ankle massage, Indian scalp massage and 25 minute facial.  
75 minute pamper for \$149.

*Senses Spa, Deck 11, Forward, Ext 7-1465.*

## VALERIO AMBER

The world's most mysterious and beautiful gem.  
Unique designs and distinctive arrangements.

Available in White Caps



**Shutters**

## PROFESSIONAL PORTRAITS TONIGHT!

Lifestyle – Six Guests maximum  
Donald Statue – Groups accommodated

5:15 p.m. – 6:00 p.m.  
7:15 p.m. – 8:30 p.m.  
9:30 p.m. – 10:30 p.m.

*\*Please note that photos are available for viewing on our interactive photo kiosks approximately five hours after being taken and are only available for purchase during this cruise.*

## ONBOARD AIRLINE CHECK IN

If you would like to have your boarding passes printed for you onboard and have your luggage taken to the airport for you, today at 8:00 p.m. is the last chance to enroll. If you have Disney Cruise Line airport transfer to Orlando International Airport and fly with one of the participating airlines. Please stop at Guest Services Desk, Deck 3, Midship.

## FINE DINING RESERVATIONS

Treat yourself to the ultimate culinary experience at sea. At Remy and Palo the enchantment of sea meets with elegance for a once-in-a-lifetime dining experience. Service/Cover charges will apply, please call 7-9734 for reservations to secure the last available spots.

## SURF @ SEA

\$0.75 per minute, or save money by buying blocks of time. \$27.50 for 50 minutes, \$40 for 100 minutes and \$75 for 250 minutes. Wireless information sheets are available at Guest Services, Deck 3, Midship. Please note: Due to satellite connectivity, onboard internet service will be noticeably slower than you may be accustomed to and may at times be interrupted or unavailable.

Disney Cruise Line

## PORT ADVENTURES

Welcome to Nassau, capital of the Bahamas. It is not too late to book an amazing adventure to Blue Lagoon Island, Atlantis, or you could book a semi-submarine ride. And don't forget, we will be arriving to Disney's Castaway Cay in two days, so plan ahead to ensure your first choice of adventure is available. Also, ask our team about the exclusive Getaway Packages, available onboard only.

All Port Adventures meet onboard the ship in Nassau.  
Please check your tour tickets for meeting times and locations.

## SHOPPING

### DISCOVER AMBER

Amber comes in a multitude of colors, from pale yellow to deep green and blue, cherry and butterscotch. Valerio 888 jewelry collections bring in something for every taste, from classic delicate designs, to modern statements. These are all available in White Caps, Deck 3, Forward.

### NEWLY ARRIVED COLLECTION – LESPORTSAC

Explore the whimsy of these chic functional bags by LeSportsac. These colorful bags feature bright patterns with LeSportsac's signature ribbon logo. Hand bags, totes, backpacks, attaches, and more! Available in White Caps, Deck 3, Forward.

### HAVE YOU SEEN MAUI JIM?

See the world the way it was meant to be seen with Maui Jim's polarized, two lens technology eyewear which provides unmatched protection and comfort. White Caps, Deck 3, Forward.

### TAG HEUER TIMEPIECES

Over 150 years of excellence in keeping time, proudly worn all over the world, and available here on the Disney Dream. White Caps, Deck 3, Forward.

### NIKE APPAREL DEAL

Buy one piece of any Nike apparel and get another Nike piece 20% off. Polos, shorts, and caps available. You are sure to hit a hole-in-one with this amazing offer! Sea Treasures, Deck 3, Forward.

### DISCOVER THE VISTA GALLERY SILENT AUCTION

Come place your bid on exquisite, newly arrived auction pieces of some of your favorite Disney characters! Bidding closes at 6:00 p.m. on the final night of the cruise. Vista Gallery, Deck 4, Midship.

### TAX AND DUTY FREE

Tax and duty free shopping right here onboard! The best brands in everything you desire. Fossil watches, Effy jewelry, Chanel fragrances, and more. Buy onboard and we will package it safely for your journey home. White Caps, Deck 3, Forward.

Due to port regulations, when the ship is docked, the stores will remain closed.

## IMPORTANT INFORMATION

### Security Notice

All Guests (including children) who wish to disembark the ship are required to present their Key to the World card at the gangway. A photo ID is also required for those Guests who are 18 years of age or older. Guests under the age of 18 are required to have a Parent, Guardian or other responsible adult sign an authorization form at the time it is given out if they wish to go ashore unaccompanied. Authorization forms are available at the gangways and Guest Services.

### Cold and Flu Reminder

Please wash hands frequently and thoroughly, particularly before meals. Contact the Health Center by dialing 7-1923, should anyone in your party become ill.

### Corridor Quiet Hours

As a courtesy to all our Guests, please recognize quiet hallway hours from 10:00 p.m. til 8:00 a.m.

### Inclement Weather

For the safety of all Guests, outdoor events may be changed due to unforeseen weather conditions.

### Environmental Message

With Disney's commitment to the Environment, please refrain from throwing anything over the Ship's side. Thank you!

### No Reserved Seats Policy

As a courtesy to all our Guests, we kindly advise that the saving of seats is not permitted in the Walt Disney Theatre, and the saving of the sun loungers is not permitted on Deck 11, 12 and 13. Items left unattended will be returned to lost and found at Guest Services, Deck 3 Midship.

### Smoking

For the comfort of our guests the following areas are designated as Smoking areas:

- Deck 13, Forward, port side, by "Currents"
- Deck 12, Aft, port side outdoor area that is accessible through the Meridian Lounge
- Deck 4, Aft, port side from 6:00 p.m. to 6:00 a.m. only (all of Deck 4 is no smoking from 6:00 a.m. to 6:00 p.m.)

Smoking is permitted on stateroom verandahs. Smoking is prohibited inside all guest staterooms. Guests found smoking in their staterooms will be charged a \$250 stateroom recovery fee.

### Walt Disney Theatre

Theatrical performances may use artificial fog, strobe lights, pyrotechnics and other special effects. For the safety of our performers and the comfort of those around you, the use of any photography, video recording devices or any electronic equipment is prohibited.

### Verandah Safety

Please do not leave any combustible materials on your balcony when not present in your stateroom for safety reasons.

DD/CL/AD/167/10.14.2012/LB/©DISNEY



Morning	8:30	8:45	9:00	9:15	9:30	9:45	10:00	10:15	10:30	10:45	11:00	11:15	11:30	11:45	12:00	12:15	12:30	12:45	1:00	1:15	1:30					
FUNNEL VISION	Classic Cartoons (G) Funnel Vision			Snow White (G) Funnel Vision							Virtual Tour Funnel Vision			Iron Uprising (G) Funnel Vision			Jam Fest at Sea									
MOVIES	Finding Nemo(G)  Buena Vista Theatre > 2:30 p.m.																									
CHARACTER	Princess Gathering Lobby Atrium			Donald Atrium																						
FUN FOR ALL AGES	Minnie Dk 4, Balcony			Daisy Dk 4, Balcony		Minnie Dk 4, Balcony		Making of the Dream Evolution																Deck Stage, Deck 11, Midship		
	Puzzle Playtime Oceaneer Club			Disney Cruise Line Trivia D Lounge														Family Crafts D Lounge								
	Youth Activities Open House Edge			Youth Activities Open House Vibe																						
ADULTS	Friends of Bill W. Outlook																									
	Group Cycling Sense Fitness Center																									
VIBE							Youth Activities Open House			Hangin' in Vibe																
EDGE	Youth Activities Open House						Gender Wars																			
OCEANEER LAB				Animation Antics						Piston Cup						Lunch			Stitch's Adventure Squad							
OCEANEER CLUB				Youth Activities Open House "Puzzle Playtime" 9:30 a.m. - 10:00 a.m.				Adventures to Neverland		Memory Wall		Big Top Fun Fest			Lunch			Magic Playfloor								
Afternoon	1:45	2:00	2:15	2:30	2:45	3:00	3:15	3:30	3:45	4:00	4:15	4:30	4:45	5:00	5:15	5:30	5:45	6:00	6:15	6:30	6:45					
FUNNEL VISION	The Little Mermaid (G) Funnel Vision						Pixar Shorts (G) Funnel Vision						Hercules (G) Funnel Vision													
MOVIES	Frankenweenie (PG) - 2D Version Buena Vista Theatre						Brave (PG)  Buena Vista Theatre																			
CHARACTER							Princess Gathering Lobby Atrium			Minnie Dk 4, Balcony			Mickey Mouse Deck 4, Balcony			Cinderella Atrium										
FUN FOR ALL AGES	Disney Animation: Creating a Character D Lounge			Disney Vacation Club Presentation Evolution			Bingo Pre Sales		\$5,000 MEGA Jackpot D Lounge						Disney's Mirror D Lounge			VILLAINS TONIGHT Walt Disney Theatre								
	Making of the Dream Evolution			Art of The Theme Show Tour Meet at Meridian			Poolside Guitar: Matt Bruno Quiet Cove - Live Music			Name That 70's Tune 687 Pub			The Dreamers LIVE Lobby Atrium - Live Music									Disney Disco D Lounge				
				Burn Fat Faster Senses Spa & Salon			Live Guitar Quiet Cove		Seminar: Relieving Back Pain Senses Fitness Center			18*21 Mini Golf Goofy's Sports Deck														
VIBE							Animation						Sports Deck						Super Sloppy Science							
EDGE							Animation						Sports Deck													
OCEANEER LAB	Get the Hook			Magic Playfloor			Youth Activities Open House "Super Sloppy Science" 4:00 p.m. - 4:45 p.m.									Mirror, Mirror D Lounge			Dinner		Anyone Can Cook					
OCEANEER CLUB				Aloha Luau			Cruisin' with Crush						Magic Playfloor			Once Upon a Time			Dinner		Toy Story Boot Camp					
Evening	7:00	7:15	7:30	7:45	8:00	8:15	8:30	8:45	9:00	9:15	9:30	9:45	10:00	10:15	10:30	10:45	11:00	11:15	11:30	11:45	12:00					
FUNNEL VISION	NFL: Denver Broncos vs. San Diego Chargers Funnel Vision (Subject to blackouts & satellite reception)																		The Lion King (G) Funnel Vision							
MOVIES	Brave (PG)  Buena Vista Theatre												Frankenweenie (PG)  Buena Vista Theatre													
CHARACTER	Mickey Dk 4, Balcony	Daisy Preludes	Mickey Dk 4, Balcony		Goofy Dk 4, Balcony							Mickey Dk 4, Balcony	Donald Preludes	Mickey Dk 4, Balcony	Ariel Atrium	Chip & Dale Dk 4, Balcony										
FUN FOR ALL AGES	Minnie Atrium		Tiana Atrium	Donald Preludes	Aurora Atrium	VILLAINS TONIGHT Walt Disney Theatre						The Dreamers LIVE Lobby Atrium - Live Music			Family Fusion D Lounge		Family Superstar Karaoke D Lounge									
	Bingo Pre Sales			BINGO D Lounge																						
	Family Dance Party Evolution			Family Superstar Karaoke D Lounge																						
ADULTS	ESPN MNF Call It! 687 Pub			NFL: Denver Broncos vs. San Diego Chargers 687 Pub (Subject to blackouts & satellite reception)						Dream Quest Evolution			Match Your Mate Evolution - Game Show			8 Trax feat. the Evolution Dancers Evolution										
	Live Guitar Quiet Cove			Trilogy LIVE District Lounge - Live Music			Tom Scott on the Keys District Lounge - Live Music			Trilogy LIVE District Lounge - Live Music			18*21 Mixer Evolution			Trilogy LIVE District Lounge - Live Music			Trilogy LIVE District Lounge - Live Music							
VIBE					Teen AquaDuck				Pump It Up				Magic Show				Ghost Voyagers									
EDGE	Anyone Can Cook				Tween AquaDuck				That's Hilarious!																	
OCEANEER LAB	Magic Show				Super Sloppy Science								Pirates of the Caribbean: Tides of Fortune				Magic Playfloor									
OCEANEER CLUB					Little Einsteins				Magic Playfloor				Camp Rocking Out				Movie Time									

Symbol for activities that will be repeated during the cruise

FOLD

Fold along the dotted lines and take me with you so you don't miss any of the fun!

FOLD

IN THE SPOTLIGHT SERIES  
SOLVE IT! SERIES

JUMP! UP! SERIES  
CREATE & INVENT SERIES  
OPEN HOUSE

CLUBHOUSE SERIES  
STORYBOOK SERIES



MONDAY, OCTOBER 15, 2012 - NASSAU, BAHAMAS

# BUENA VISTA THEATRE



1:00 p.m.  
Run Time:  
1 hrs 30 mins  
Rating: G



3:00 p.m. - 2D Version  
10:30 p.m. - **DOLBY 3D**  
Run Time:  
1 hr 24 mins  
Rating: PG



5:30 p.m. & 8:30 p.m.  
Run Time:  
1 hr 31 min  
Rating: PG

## Character Appearances

### PRINCESS GATHERING

Lobby Atrium  
9:00 a.m. & 3:30 p.m.  
(Ship's photographers available  
for the 9:00 a.m. gathering only.)

### TINKER BELL

Lobby Atrium - 9:15 a.m.

### MINNIE MOUSE

Deck 4, Balcony - 9:15 a.m.,  
10:15 a.m. & 3:45 p.m.  
Lobby Atrium - 5:15 p.m.,  
7:15 p.m. & 9:45 p.m.

### DAISY DUCK

Deck 4, Balcony - 9:45 a.m.  
Preludes -  
5:00 p.m. & 7:30 p.m.

### DONALD DUCK

Lobby Atrium - 1:00 p.m.,  
Preludes - 5:30 p.m., 8:00 p.m.  
& 9:45 p.m.

### MICKEY MOUSE

Deck 4, Balcony - 5:00 p.m.,  
7:15 p.m. & 9:30 p.m.

### BELLE

Lobby Atrium - 5:15 p.m.

### CINDERELLA

Lobby Atrium -  
5:45 p.m. & 7:15 p.m.

### PRINCESS TIANA

Lobby Atrium - 7:45 p.m.

### PRINCESS AURORA

Lobby Atrium - 8:15 p.m.

### GOOFOY

Deck 4, Balcony - 8:15 p.m.

### SNOW WHITE

Lobby Atrium - 9:45 p.m.

### ARIEL

Lobby Atrium - 10:15 p.m.

### CHIP & DALE

Deck 4, Balcony - 10:30 p.m.

For details of daily Disney character appearances, refer to the character line in your Navigator Grid or the digital character board in the Lobby Atrium.

## YOUTH ACTIVITIES THEMED EXPERIENCES

**CLUBHOUSE SERIES**  
focuses on movement and  
features content which  
appeals to younger children.

**STORYBOOK SERIES**  
is designed with a strong  
connection to the Disney  
classic stories.

**JUMP UP! SERIES**  
includes large ground games  
& movement-oriented  
activities.

**CREATE & INVENT SERIES**  
will have a tactile focus  
allowing children to create  
and admire their work.

### OPEN HOUSE

activities for families, adults and children of all ages to enjoy together.

**IN THE SPOTLIGHT SERIES**  
focuses on children's stage  
presence with lots of activities  
and enthusiasm.

**SOLVE IT! SERIES**  
are less active, but will challenge  
children with problem/solutions  
based activities.

## SHIP DIRECTORY

### YOUTH ACTIVITIES

DISNEY'S OCEANEER CLUB	DECK 5, MID	10:30 A.M. - 12:00 MID
DISNEY'S OCEANEER LAB	DECK 5, MID	9:00 A.M. - 1:00 A.M.
EDGE	DECK 13, MID	10:00 A.M. - 1:00 A.M.
VIBE	DECK 4, FWD	11:00 A.M. - 2:00 A.M.
IT'S A SMALL WORLD NURSERY	DECK 5, MID	9:00 A.M. - 1:00 A.M.

### RECREATION

AQUADUCK	DECK 12, MID	9:00 A.M. - 12:00 MID
DONALD'S POOL	DECK 11, MID	6:00 A.M. - 12:00 MID
GOLF/SPORTS SIMULATORS	DECK 13, AFT	11:00 A.M. - 6:00 P.M.
GOOFOY & MAX'S MINI GOLF	DECK 13, AFT	8:00 A.M. - 10:00 P.M.
GOOFOY'S SPORTS DECK	DECK 13, AFT	12:00 A.M. - 6:00 P.M.
MICKEY'S POOL	DECK 11, MID	6:00 A.M. - 12:00 MID
MICKEY'S SLIDE	DECK 11, MID	9:00 A.M. - 7:00 P.M.
MIDSHIP DETECTIVE AGENCY	DECK 5, MID	8:00 A.M. - 11:00 P.M.
NEMO'S REEF	DECK 11, MID	9:00 A.M. - 7:00 P.M.
PORT ADVENTURES DESK	DECK 5, MID	8:00 A.M. - 11:00 A.M. 6:00 P.M. - 8:30 P.M.
QUIET COVE POOL	DECK 11, FWD	6:00 A.M. - 12:00 MID
SENSES FITNESS CENTER	DECK 11, FWD	6:00 A.M. - 10:00 P.M.

### GENERAL INFORMATION

ARR-CADE	DECK 11, AFT	24 HOURS
DISNEY VACATION CLUB	DECK 4, MID	9:00 A.M. - 11:00 A.M. 5:30 P.M. - 10:00 P.M.
FUTURE CRUISE SALES DESK	DECK 4, MID	8:00 A.M. - 10:00 A.M. 3:00 P.M. - 10:00 P.M.
GUEST SERVICES	DECK 3, MID	24 HOURS
MEDICAL HEALTH CENTER	DECK 1, FWD	9:30 A.M. - 11:00 A.M. 4:30 P.M. - 7:00 P.M.
PORT & SHOPPING DESK	DECK 4, MID	8:00 A.M. - 9:00 A.M.
PRELUDES	DECK 3, FWD	5:45 P.M. - 6:30 P.M. 8:00 P.M. - 8:45 P.M.
SENSES SPA AND SALON	DECK 11, FWD	8:00 A.M. - 10:00 P.M.
SHUTTERS PHOTO GALLERY	DECK 4, MID	5:00 P.M. - 11:00 P.M.

### SHOPPING

MICKEY'S MAINSAIL	DECK 3, FWD	6:30 P.M. - 11:00 P.M.
SEA TREASURES	DECK 3, FWD	6:30 P.M. - 11:00 P.M.
VISTA GALLERY	DECK 4, MID	6:30 P.M. - 11:00 P.M.
WHITE CAPS	DECK 3, FWD	6:30 P.M. - 11:00 P.M.
WHOZITS & WHATZITS	DECK 11, MID	6:30 P.M. - 10:00 P.M.

All Ashore: Approx. 9:30 a.m.

All Aboard: 6:00 p.m.

### SHIP'S AGENT IN NASSAU

Nassau, Bahamas  
R.H. Curry & Company, 303 Shirley St.,  
P.O. Box N8168 Nassau, Bahamas  
242-323-8425 or 242-357-9218

### IMPORTANT NUMBERS

Fire/Security: 7-3001  
Medical Emergency: 7-3000  
Health Center: 7-1923

### DINNER MENU

Animator's Palate: Pacific Rim Cuisine  
Enchanted Garden: Continental Market  
Royal Palace: French Dinner  
Dining Times: 5:45 p.m. & 8:15 p.m.

### DRINK OF THE DAY

Yellow Bird (Alcoholic)  
Parrot Song (Non Alcoholic)

### WEATHER FORECAST

Monday: Sunny  
High: 78°F/26°C  
Tuesday: Sunny  
High: 78°F/26°C

Evening Attire: Optional Dress Up

## DINING & LOUNGES

### BREAKFAST

CABANAS CONTINENTAL	DECK 11, AFT	7:00 A.M. - 7:30 A.M.
CABANAS	DECK 11, AFT	7:30 A.M. - 10:30 A.M.
ENCHANTED GARDEN	DECK 2, MID	8:00 A.M. - 10:00 A.M.
ROYAL PALACE	DECK 3, MID	8:00 A.M. - 9:30 A.M.

### LUNCH

CABANAS	DECK 11, AFT	12:00 P.M. - 2:00 P.M.
PIZZERIA AT CABANAS	DECK 11, AFT	2:00 P.M. - 4:00 P.M.
FILLMORE'S FAVORITES	DECK 11, MID	11:00 A.M. - 6:00 P.M.
LUIGI'S PIZZA	DECK 11, MID	11:00 A.M. - 6:00 P.M.
ROYAL PALACE	DECK 3, MID	12:00 P.M. - 1:30 P.M.
TOW MATER'S GRILL	DECK 11, MID	11:00 A.M. - 6:00 P.M.

### DINNER

ANIMATOR'S PALATE	DECK 3, AFT	5:45 P.M. & 8:15 P.M.
ENCHANTED GARDEN	DECK 2, MID	5:45 P.M. & 8:15 P.M.
ROYAL PALACE	DECK 3, MID	5:45 P.M. & 8:15 P.M.
CABANAS TABLE SERVICE	DECK 11, AFT	6:30 P.M. - 8:30 P.M.
TOW MATER'S GRILL	DECK 11, MID	6:00 P.M. - 11:00 P.M.
PALO & REMY (18+)	DECK 12, AFT	6:00 P.M. - 9:00 P.M.

(RESERVATION REQUIRED & COVER CHARGE APPLICABLE. DIAL #7-9734)

### LATE NIGHT SNACKS

LUIGI'S PIZZA	DECK 11, MID	9:30 P.M. - 12:30 A.M.
THE DISTRICT	DECK 4, AFT	10:45 P.M. - 11:45 P.M.

### ADDED FEATURES

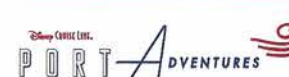
BEVERAGE STATION	DECK 11, AFT	24 HOURS
EYE SCREAM	DECK 11, MID	11:00 A.M. - 12:30 A.M.
ROOM SERVICE	DIAL 0	24 HOURS

### ENTERTAINMENT - LOUNGES - BARS

Adults must be 21 and older to consume alcoholic beverages.

687 PUB	DECK 4, AFT	5:00 P.M. - 9:00 P.M.
687 PUB (18+)	DECK 4, AFT	9:00 P.M. - 12:30 A.M.
BON VOYAGE	DECK 3, MID	9:00 A.M. - 11:00 P.M.
COVE BAR (18+)	DECK 11, FWD	10:30 A.M. - 11:00 P.M.
COVE CAFE (18+)	DECK 11, FWD	7:00 A.M. - 6:00 P.M.
COVE CAFE WINE BAR (18+)	DECK 11, FWD	6:00 P.M. - 12:00 MID
CURRENTS (18+)	DECK 13, FWD	11:00 A.M. - 12:30 A.M.
D LOUNGE	DECK 4, MID	SHOWTIMES
DISTRICT LOUNGE	DECK 4, AFT	4:00 P.M. - 9:00 P.M.
DISTRICT LOUNGE (18+)	DECK 4, AFT	9:00 P.M. - 12:00 MID
EVOLUTION (18+)	DECK 4, AFT	9:30 P.M. - 2:00 A.M.
FROZONE TREATS	DECK 11, MID	11:00 A.M. - 11:00 P.M.
MERIDIAN (18+)	DECK 12, AFT	5:00 P.M. - 12:30 A.M.
PINK (18+)	DECK 4, AFT	5:00 P.M. - 12:30 A.M.
OUTLOOK	DECK 14, MID	SUNSET TIME
SKYLINE (18+)	DECK 4, AFT	5:00 P.M. - 12:30 A.M.
VISTA CAFE	DECK 4, MID	7:30 A.M. - 11:00 P.M.
WAVES	DECK 12, AFT	12:00 P.M. - 7:00 P.M.

Consumers who order raw or partially cooked, ready-to-eat food of animal origin, are hereby informed that the food is not sufficiently cooked to ensure its safety.



**IMPORTANT INFORMATION**  
Please check your Port Adventure tour  
tickets for meeting times and locations.  
Visit the Port Adventures Deck 5,  
Midship, for any questions.